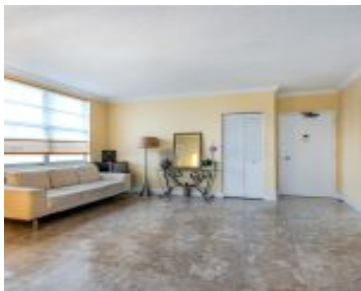


# 1985 OCEAN DR HALLANDALE BEACH FL 33009 1985 S OCEAN DR 6P

<https://www.cays.com>



THE HEMISPHERES CONDO UNIT 6 P BLDG BAY SOUTH PER CDO BK/PG: 4165/352 Enjoy ocean view from this bright corner 2 bed/2 bath, largest 2bedroom floorplan at the Hemispheres, resort-style building with beach service. It can be your ideal Florida residence or an investment project. Ready for your design, amazing floorplan, spacious bedrooms, three walk-in [...]

- 2 beds
- 2, 2 baths
- Condominium, Residential
- Condominium, Residential
- Active
- 1380 sq ft

## Basics



**Category:** Condominium, Residential  
**Status:** Active  
**Bathrooms:** 2, 2 baths  
**Floors:** 12 floors  
**Year built:** 1972  
**Subdivision Name:** HEMISPHERES CONDO

**Type:** Condominium, Residential  
**Bedrooms:** 2 beds  
**Half baths:** 0 half baths  
**Area:** 1380 sq ft  
**View:** Ocean  
**County:** Broward

---

## Property details

**Subdivision Name:** HEMISPHERES CONDO

**Parcel Number:** 33009

---

## Property Features

**Waterfront Features:** Bayfront, Canal Access

**Parking Features:** Attached, Garage, One Space

**Cooling:** Central Air

**Cooling Y/N:** 1

**Garage Y/N:** 1

**Heating:** Central

**Heating Y/N:** 1

**Pets Allowed:** Conditional, Yes

**View:** Ocean

**View Y/N:** 1

**Waterfront Y/N:** 1

**Stories Total:** 12

---

## Rooms & Units Description

**Unit Number:** 6P

---

## Location Details

**County Or Parish:** Broward

**Elementary School:** Hallandale Elem

**Middle/Junior School:** Gulfstream

**High School:** Hallandale High



---

## Building Details

**Construction Materials:** Block

**Garage Spaces:** 1

**Covered Spaces:** 1

**Floor covering:** CeramicTile, Laminate

---

## Amenities & Features

**Pool Features:** Association,Heated

**Security Features:** DoorMan,ElevatorSecured

**Association Amenities:**

BeachRights,Marina,BusinessCenter,Clubhouse,FitnessCenter,Laundry,Barbecue,PicnicArea,Pool,Storage,TennisCourts,Elevators

**Cooling:** CentralAir

**Heating:** Central

**Laundry Features:** CommonArea

**Parking Features:**

Attached,Garage,OneSpace

**Patio & Porch Features:**

Balcony,Open

**Waterfront Features:**

Bayfront,CanalAccess

**Exterior Features:** Balcony

**Interior Features:**

BedroomOnMainLevel,FirstFloorEntry

**Appliances:**

ElectricRange,Microwave,Refrigerator

---

## Nearby Schools

**Middle Or Junior School:** Gulfstream

**High School:** Hallandale High

**Elementary School:** Hallandale Elem

---

## Expenses, Fees & Taxes

**Association Fee:** \$1,278

**Tax Year:** 2023

**Tax Annual Amount:** \$7,849

---

## Fees & Taxes

**Association Fee:** 1278

---

## Miscellaneous



**Association Fee Frequency:** Monthly **List Office Name:** Luxe Properties

**Listing Terms:** Cash,Conventional

---

## Miscellaneous

**Above Grade Finished Area:** Hallandale Beach, FL  
**Virtual Tour URL:** <https://www.zillow.com/view-imx/71a09ce5-cebf-40a2-9b04-15ab5a3a9d33?setAttribution=mls&wl=true&initialViewType=pano>

---

## Courtesy of

**Office Name:** Luxe Properties

