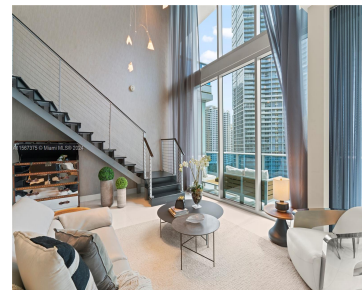
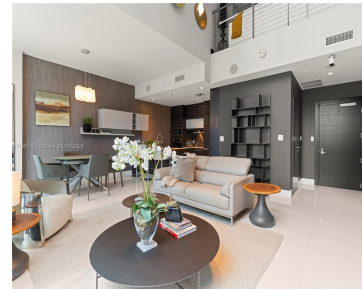


200 BISCAYNE BOULEVARD WAY 1407 MIAMI FL 33131

<https://www.cays.com>



Welcome to luxury living, this modern 2-bedroom, 2.5-bathroom offers 1574 square feet of sophisticated living space with breathtaking views. With a loft den, double-height ceiling, electric shades, and magazine-quality inspired design, this furnished unit is the pinnacle of elegance. Enjoy a wealth of amenities, including waterfront access, a gym, pool, yoga studio, and on-site restaurant, [...]

- 2 beds
- 3 baths
- Condominium
- Residential
- Active
- 1574 sq ft

Basics

Bathrooms Half: 1

Lot Size Units: Square Feet

Type: Condominium

Bedrooms: 2 beds

Area: 1574 sq ft

Bathrooms Full: 2

Category: Residential

Status: Active

Bathrooms: 3 baths

Year built: 2008



Property details

Total Building Area: 1574

Subdivision Name: EPIC WEST CONDO

Possession: Close Of Escrow

Direction Faces: South

Parcel Number: 01-42-06-068-1660

Property Condition: Updated/Remodeled

Property Features

Exterior Features: Balcony

Waterfront Features: Bay Front

Parking Features: Assigned,Attached,Covered,Garage,One Space,Valet

Appliances: Dishwasher,Microwave,Washer

Association Amenities: Business Center,Elevator(s),Fitness Center,Pool,Sauna,Spa/Hot Tub

Cooling: Central Air

Covered Spaces: 2

Furnished: Furnished

Garage Y/N: 1

Heating Y/N: 1

View: Bay,Canal,City,Intercoastal,Water

Entry Level: 1407

Patio and Porch Features: Balcony,Open

Waterfront Y/N: 1

Stories Total: 54

Interior Features: Bedroom on Main Level,First Floor Entry,Upper Level Primary

Pool Features: Association

Security Features: Door Man,Elevator Secured,Lobby Secured

Architectural Style: High Rise

Construction Materials: Block

Cooling Y/N: 1

Flooring: Ceramic Tile

Garage Spaces: 2

Heating: Central

Pets Allowed: Conditional,No

View Y/N: 1

Entry Location: 1407

Property Attached Y/N: 1

Attached Garage Y/N: 1

Rooms & Units Description

Unit Number: 1407

Total Rooms: 1



Location Details

County Or Parish: Miami-Dade County

Fees & Taxes

Tax Annual Amount: 15608

Tax Year: 2023

Tax Legal Description: EPIC WEST
CONDO UNIT 1407 UNDIV 0.3447% INT
IN COMMON ELEMENTS OFF REC
26683-3040

Association Fee: 6000

Association Fee Frequency:
Quarterly

Association Fee Includes:
Amenities, Parking, Pool(s), Security, Trash

Miscellaneous

Public Survey Township: 1

**Public
Survey
Section:** 6

Syndication Remarks: Luxury unit with 1574 sq ft of living space, 2-bed, 2.5-bath loft den, double-height ceiling, stunning views. Highrise living at its finest await.

**Year Built
Details:**
Resale

Virtual Tour URL: <https://www.propertypanorama.com/instaview/mia/A11567375>

Courtesy of

Office Name: Hera Realty Group, LLC.

