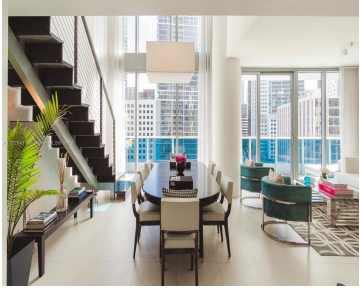


200 BISCAYNE BOULEVARD WAY 904 MIAMI FL 33131

<https://www.cays.com>



A Must see 2 Bedroom, 2.5 Bathroom + Den townhouse in Epic West building. Top of the line appliances and finishes, breathtaking views of the Miami River, Biscayne Bay and Brickell avenue. Acces to epic hotel amenities, garage parking, valet service and concierge, fitness center, spa, 2 infinity + 3 resident pools, Marina access, and [...]

- 2 beds
- 3 baths
- Condominium
- Residential
- Active
- 1494 sq ft

Basics

Bathrooms Half: 1

Lot Size Units: Square Feet

Type: Condominium

Bedrooms: 2 beds

Area: 1494 sq ft

Bathrooms Full: 2

Category: Residential

Status: Active

Bathrooms: 3 baths

Year built: 2008



Property details

Total Building Area: 1494

Subdivision Name: EPIC WEST CONDO

Parcel Number: 01-42-06-068-0940

Possession: Closing & Funding

Property Features

Exterior Features:

Balcony,Security/High Impact Doors

Waterfront Features: Bay

Front,Canal Front

Pool Features: Association

Security Features: Door Man,Elevator Secured,Lobby Secured,Smoke Detector(s)

Architectural Style: High Rise

Construction Materials: Block

Cooling Y/N: 1

Heating: Central

Pets Allowed: Conditional,Yes

View Y/N: 1

Entry Location: 9

Property Attached Y/N: 1

Interior Features: Built-in Features,First Floor Entry,High Ceilings,Upper Level Primary,Bar

Window Features: Impact Glass

Parking Features: Two or More Spaces,Valet

Appliances: Built-In Oven,Dryer,Dishwasher,Electric Range,Microwave,Refrigerator,Washer

Association Amenities: Clubhouse,Fitness Center,Other,Pool,Elevator(s)

Cooling: Central Air

Flooring: Marble,Tile

Heating Y/N: 1

View: Bay,Canal,River

Entry Level: 9

Patio and Porch Features: Balcony,Open

Stories Total: 54

Rooms & Units Description

Unit Number: 904

Number of Units in the Community: 342

Location Details

County Or Parish: Miami-Dade County



Fees & Taxes

Tax Annual Amount: 11000

Tax Year: 2022

Tax Legal Description: EPIC WEST CONDO
UNIT 904 UNDIV 0.3272% INT IN COMMON
ELEMENTS OFF REC 26683-3040

Association Fee: 1500

Association Fee Frequency: Quarterly

Association Fee Includes: Common
Areas, Maintenance Grounds, Maintenance
Structure, Other

Miscellaneous

Public Survey Township: 1

**Public
Survey
Section:** 6

Syndication Remarks: A Must see 2 Bedroom, 2.5 Bathroom + Den townhouse
in Epic West building.

**Year Built
Details:**
Unknown

Virtual Tour URL:

<https://www.propertypanorama.com/instaview/mia/A11320411>

Courtesy of

Office Name: One Sotheby's International Realty

