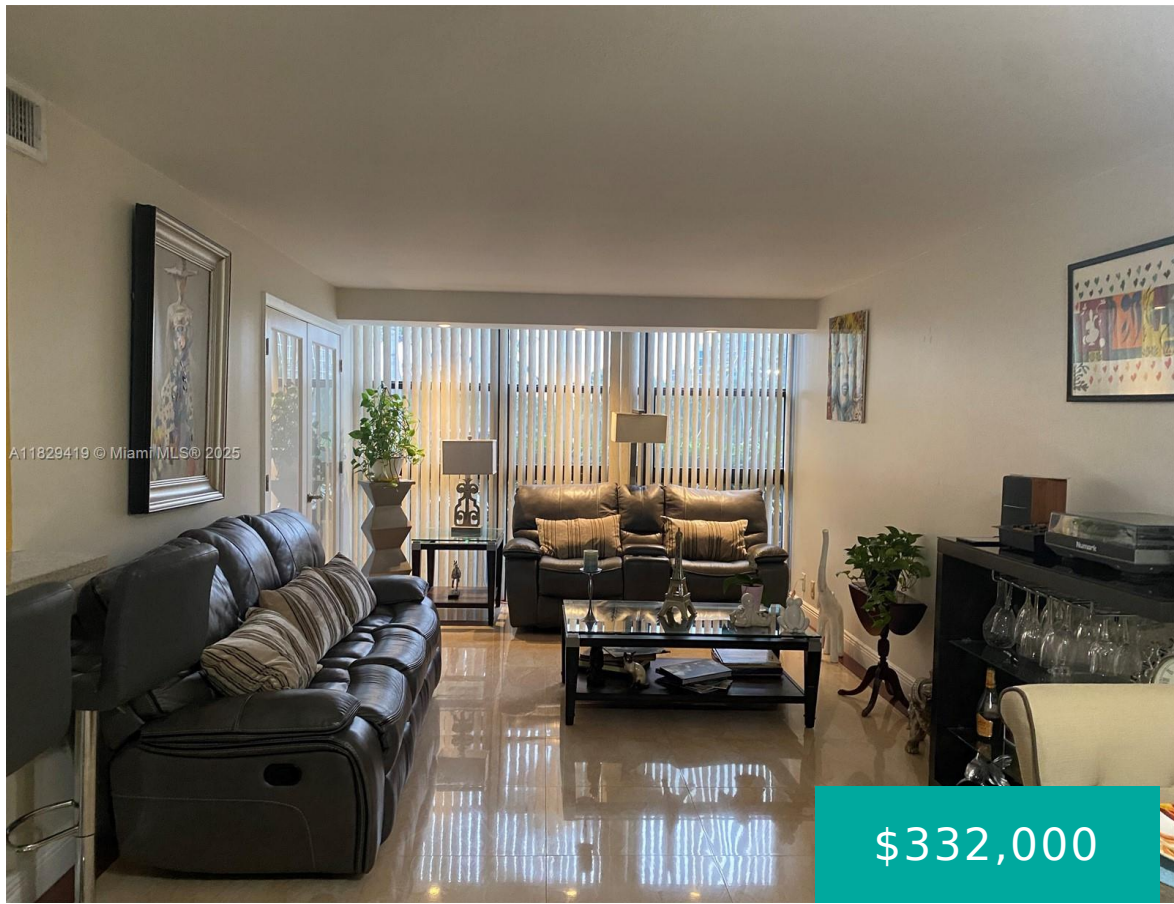
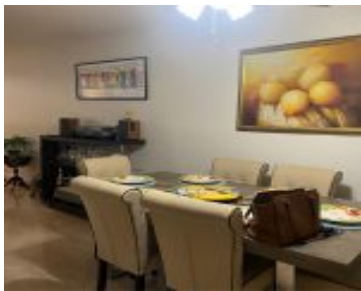


# 200 LESLIE DR HALLANDALE BEACH FL 33009 200 NE LESLIE DR 225

<https://www.cays.com>



\$332,000



200 LESLIE CONDO F/K/A TOWERS OF OCEANVIEW POINT UNIT 225 PER CDO BK/PG: 9907/700 AND AMCDO BK/PG: 32331/1866 2/2 Located in desirable THREE ISLAND AREA. Step into this stylish and spacious condo featuring a bright open layout and a beautifully updated kitchen with sleek stainless-steel appliances—perfect for entertaining or everyday living. Enjoy the comfort of [...]

- 2 beds
- 2, 2 baths
- Condominium, Residential
- Condominium, Residential
- Active
- 1075 sq ft

## Basics



**Category:** Condominium, Residential  
**Status:** Active  
**Bathrooms:** 2, 2 baths  
**Floors:** 9 floors  
**Year built:** 1981  
**Subdivision Name:** 200 LESLIE CONDO

**Type:** Condominium, Residential  
**Bedrooms:** 2 beds  
**Half baths:** 0 half baths  
**Area:** 1075 sq ft  
**View:** Garden  
**County:** Broward

---

## Property details

**Subdivision Name:** 200 LESLIE CONDO

**Parcel Number:** 33009

---

## Property Features

**Building Features:** ExteriorLighting

**Waterfront Features:** CanalFront

**Parking Features:** Assigned,Detached,Garage,OneSpace

**Cooling:** Electric

**Cooling Y/N:** 1

**Garage Y/N:** 1

**Heating:** Central

**Heating Y/N:** 1

**Pets Allowed:** SizeLimit,Yes

**View:** Garden

**Waterfront Y/N:** 1

**Stories Total:** 9

---

## Rooms & Units Description

**Unit Number:** 225

---

## Location Details

**County Or Parish:** Broward

**Directions:** GPS HALLANDALE BEACH BLVD AND THREE ISLAND

**Elementary School:** Gulfstream **Middle/Junior School:** Gulfstream

**High School:** Hallandale High



---

# Building Details

**Architectural Style:** GardenApartment

**Covered Spaces:** 1

**Floor covering:** CeramicTile, Hardwood, Wood

**Construction Materials:** Block

**Garage Spaces:** 1

---

## Amenities & Features

**Pool Features:** Association

**Security Features:** ComplexFenced,DoorMan,ElevatorSecured

**Association Amenities:**

BilliardRoom,BikeStorage,BusinessCenter,Clubhouse,CommunityKitchen,FitnessCenter,Library,Barbecue,PicnicArea,Pool,Sauna,Elevators

**Window Features:** Blinds,ImpactGlass

**Door Features:** FrenchDoors

**Furnished:** Unfurnished

**Interior Features:**

BreakfastArea,ClosetCabinetry,SecondFloorEntry,FrenchDoorsAtriumDoors,HandicapAccess,LivingDiningRoom,MainLivingAreaEntryLevel,TubShower

**Features:** ExteriorLighting

**Parking Features:** Assigned,Detached,Garage,OneSpace

**Accessibility Features:** Other,AccessibleDoors,AccessibleHallways

**Waterfront Features:** CanalFront

**Cooling:** Electric

**Exterior Features:** Barbecue,Courtyard

**Heating:** Central

**Appliances:**

Dryer,Dishwasher,ElectricRange,ElectricWaterHeater,IceMaker,Microwave,Refrigerator,TrashCompactor

---

# Nearby Schools

**Middle Or Junior School:** Gulfstream

**High School:** Hallandale High

**Elementary School:** Gulfstream

---

# Expenses, Fees & Taxes

**Association Fee:** \$975

**Tax Year:** 2024

**Tax Annual Amount:** \$2,199

---

# Fees & Taxes

**Association Fee:** 975

---

# Miscellaneous



**Association Fee Frequency:** Monthly

**Listing Terms:** Cash,Conventional

**List Office Name:** Beachfront Realty Inc

**Attribution Contact:** 201-887-2465

---

## Miscellaneous

**Above Grade**

**Finished Area:**  
Hallandale Beach,  
FL

**Virtual Tour URL:**

<https://www.propertypanorama.com/instaview/mia/A11829419>

---

## Courtesy of

**Office Name:** Beachfront Realty Inc

