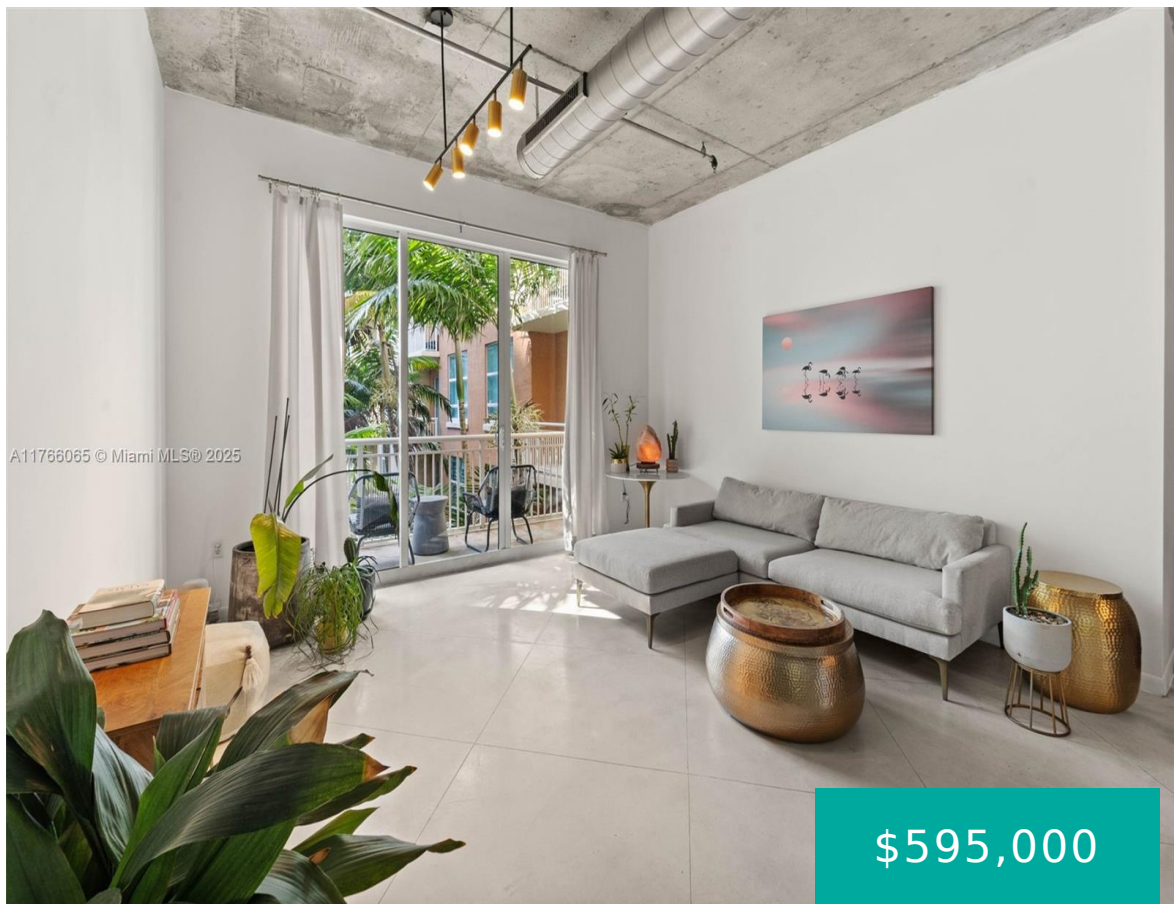


2001 BISCAYNE BLVD MIAMI FL 33137 2001 BISCAYNE BLVD 2409

<https://www.cays.com>



CITE CONDO UNIT 2409 BLDG B UNDIV 0.002864% INT IN COMMON ELEMENTS OFF REC 22775-1573 COC 23264-3904 04 2005 1 Loft-Style Living with Zen Vibes Across from Margaret Pace Park! Experience serene waterfront living at Cite on the Bay. This 2-bed, 2-bath home in Edgewater East features a coveted split floor plan, soaring 11' ceilings, [...]

- 2 beds
- 2, 2 baths
- Condominium, Residential
- Condominium, Residential
- Active
- 1288 sq ft

Basics



Category: Condominium, Residential

Status: Active

Bathrooms: 2, 2 baths

Floors: 6 floors

Year built: 2004

View: Garden

County: Miami-Dade

Type: Condominium, Residential

Bedrooms: 2 beds

Half baths: 0 half baths

Area: 1288 sq ft

Property Condition: UpdatedRemodeled

Subdivision Name: CITE CONDO

Property details

Subdivision Name: CITE CONDO

Parcel Number: 33137

Property Features

Building Features: ExteriorLighting

Cooling: CentralAir,Electric

Garage Y/N: 1

Heating Y/N: 1

View: Garden

Parking Features: Assigned,Attached,Garage,OneSpace

Cooling Y/N: 1

Heating: Central,Electric

Pets Allowed: Conditional,Yes

Stories Total: 6

Rooms & Units Description

Unit Number: 2409

Location Details

County Or Parish: Miami-Dade

Middle/Junior School: de Diego; Jose

Elementary School: Wheatley; Phyllis

High School: Washington; Brooker T



Building Details

Construction Materials: Block

Garage Spaces: 1

Covered Spaces: 1

Floor covering: Concrete, Tile

Amenities & Features

Pool Features: Association, Heated

Security Features: DoorMan, ElevatorSecured

Association Amenities: BilliardRoom, Clubhouse, FitnessCenter, Pool, SpaHotTub, Trash, Elevators

Exterior Features: Balcony

Interior Features:

BreakfastBar, DiningArea, SeparateFormalDiningRoom, DualSinks, Pantry, SplitBedrooms, TubShower

Features: ExteriorLighting

Parking Features:

Assigned, Attached, Garage, OneSpace

Patio & Porch Features:

Balcony, Open

Cooling: CentralAir, Electric

Heating: Central, Electric

Appliances:

Dishwasher, ElectricRange, Refrigerator

Nearby Schools

Middle Or Junior School: de Diego; Jose **Elementary School:** Wheatley; Phyllis

High School: Washington; Brooker T

Expenses, Fees & Taxes

Association Fee: \$1,248

Tax Year: 2024

Tax Annual Amount: \$5,268

Fees & Taxes

Association Fee: 1248

Miscellaneous



Association Fee Frequency: Monthly **List Office Name:** Compass Florida, LLC

Listing Terms: Cash,Conventional,FHA

Miscellaneous

Above Grade **Virtual Tour URL:**

Finished Area: <https://www.propertypanorama.com/instaview/mia/A11766065>
Miami, FL

Courtesy of

Office Name: Compass Florida, LLC

