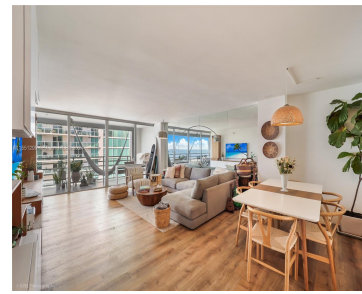


2025 BRICKELL AVE 2003 MIAMI FL 33129

<https://www.cays.com>



A captivating corner condo in the iconic Atlantis on Brickell, offering mesmerizing bay and city views. Witness spectacular sunsets and sunrises from the expansive balcony spanning over 300 square feet, while every room boasts panoramic views of Biscayne Bay and the Miami skyline. Revel in the contemporary charm of the fully updated kitchen with stainless [...]

- 2 beds
- 3 baths
- Condominium
- Residential
- Active
- 1666 sq ft

Basics

Bathrooms Half: 1

Lot Size Units: Square Feet

Type: Condominium

Bedrooms: 2 beds

Area: 1666 sq ft

Bathrooms Full: 2

Category: Residential

Status: Active

Bathrooms: 3 baths

Year built: 1982



Property details

Total Building Area: 1666

Subdivision Name: ATLANTIS ON BRICKELL COND

Possession: Closing & Funding

Direction Faces: Southeast

Parcel Number: 01-41-39-039-0500

Property Features

Exterior Features: Balcony

Waterfront Features: Bay Front

Parking Features: One Space

Appliances: Dryer,Dishwasher,Electric Range,Disposal,Refrigerator

Association Amenities: Fitness Center,Pool,Tennis Court(s)

Cooling: Central Air,Electric

Covered Spaces: 1

Garage Spaces: 1

Heating: Central,Electric

Pets Allowed: Conditional,Yes

View Y/N: 1

Entry Location: 20

Property Attached Y/N: 1

Stories Total: 21

Interior Features: Bedroom on Main Level,First Floor Entry

Pool Features: Association

Security Features: Lobby Secured,Security Guard

Architectural Style: Other

Construction Materials: Block

Cooling Y/N: 1

Flooring: Other

Garage Y/N: 1

Heating Y/N: 1

View: Bay,City,Water

Entry Level: 20

Patio and Porch Features: Balcony,Open

Waterfront Y/N: 1

Rooms & Units Description

Unit Number: 2003



Location Details

County Or Parish: Miami-Dade County

Fees & Taxes

Tax Annual Amount: 8220

Tax Year: 2023

Tax Legal Description: ATLANTIS ON BRICKELL CONDO UNIT
2003 UNDIV .0101% INT IN COMMON ELEMENTS OFF REC
11450-2176 OR 16853-0182 0695 4 COC 26449-4866 06 2008 1

Association Fee: 1755

Association Fee Frequency: Monthly

Association Fee Includes:
Parking

Miscellaneous

Public Survey Township: 1

**Public
Survey
Section:** 39

Syndication Remarks: Centrally positioned along Brickell Avenue, enjoy swift access to Miami's suburbs, shopping destinations.

**Year Built
Details:**
Resale

Virtual Tour URL:

<https://www.propertypanorama.com/instaview/mia/A11551299>

Courtesy of

Office Name: Fortune Christie's International Real Estate

