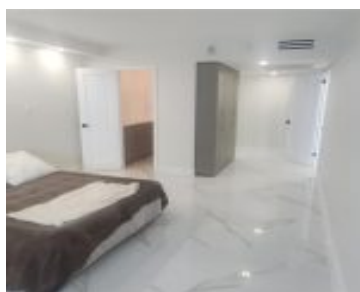


# 2030 OCEAN DR HALLANDALE BEACH FL 33009 2030 S OCEAN DR 1704

<https://www.cays.com>



A11787070 © Miami MLS® 2025



PARKER PLAZA CONDO ESTATES UNIT 1704 PER CDO BK/PG:4318/273  
 UTTERLY GorgeouS just renovated 2/2 an Investors Dream with great tenant  
 and a Bijou den/office/nursery in boutique building on OCEAN DRIVE on the  
 beach with nice intracoastal views & large balcony with glass railing. Porcelain  
 floors, no ceiling popcorn, impact windows, ALL new appliances: Subzero  
 fridge, Gaggenau cooktop, electric stove, hood falmec, Moen sink, Bosch  
 dishwasher, Quartz [...]

- 2 beds
- 2, 2 baths
- Condominium, Residential
- Condominium, Residential
- Active
- 1248 sq ft



## Basics



**Category:** Condominium, Residential

**Status:** Active

**Bathrooms:** 2, 2 baths

**Floors:** 22 floors

**Year built:** 1970

**Subdivision Name:** PARKER PLAZA CONDO ESTATE

**Type:** Condominium, Residential

**Bedrooms:** 2 beds

**Half baths:** 0 half baths

**Area:** 1248 sq ft

**View:** Bay, City, Intercoastal

**County:** Broward

---

## Property details

**Subdivision Name:** PARKER PLAZA CONDO ESTATE

**Parcel Number:** 33009

---

## Property Features

**Waterfront Features:**  
OceanAccess, OceanFront

**Carport Y/N:** 1

**Cooling Y/N:** 1

**Heating Y/N:** 1

**View:** Bay, City, Intercoastal

**Waterfront Y/N:** 1

**Parking Features:** Assigned, Guest, OneSpace

**Cooling:** CentralAir

**Heating:** Electric

**Pets Allowed:** CatsOk, Yes

**View Y/N:** 1

**Stories Total:** 22

---

## Rooms & Units Description

**Unit Number:** 1704

---

## Location Details



**County Or Parish:** Broward

**Directions:** East to ocean drive A1A and then go north to 2030 ocean drive on ocean side and go to valet up the ramp .

**Elementary School:** Gulfstream **Middle/Junior School:** Mcnicol

**High School:** Hallandale High

---

## Building Details

**Architectural Style:** HighRise,Stilt

**Construction Materials:** Block

**Covered Spaces:** 1

**Floor covering:** Tile

---

## Amenities & Features

**Pool Features:** Association,Heated

**Parking Features:** Assigned,Guest,OneSpace

**Security Features:**

ClosedCircuitCameras,SecurityGuard

**Association Amenities:**

BilliardRoom,Clubhouse,FitnessCenter,Laundry,Barbecue,Other,PicnicArea,Pool,SpaHotTub,Storage,Elevators

**Waterfront Features:**

OceanAccess,OceanFront

**Utilities:** CableAvailable

**Window Features:**

Blinds,ImpactGlass

**Cooling:** CentralAir

**Exterior Features:**

SecurityHighImpactDoors,Other

**Furnished:** Unfurnished

**Heating:** Electric

**Interior Features:** BreakfastArea,LivingDiningRoom,WalkInClosets

**Laundry Features:** CommonArea

**Appliances:** Dishwasher,Disposal

---

## Nearby Schools

**Middle Or Junior School:** Mcnicol

**Elementary School:** Gulfstream

**High School:** Hallandale High

---

## Expenses, Fees & Taxes

**Tax Annual Amount:** \$7,906

**Tax Year:** 2024

---

## Miscellaneous



**Association Fee Frequency:** Annually      **List Office Name:** Halprin Realty LLC

**Listing Terms:** Cash,Conventional,VaLoan      **Direction Faces:** North

---

## Miscellaneous

**Above Grade**      **Virtual Tour URL:**  
**Finished Area:**      <https://www.propertypanorama.com/instaview/mia/A11787070>  
Hallandale Beach,  
FL

---

## Courtesy of

**Office Name:** Halprin Realty LLC

