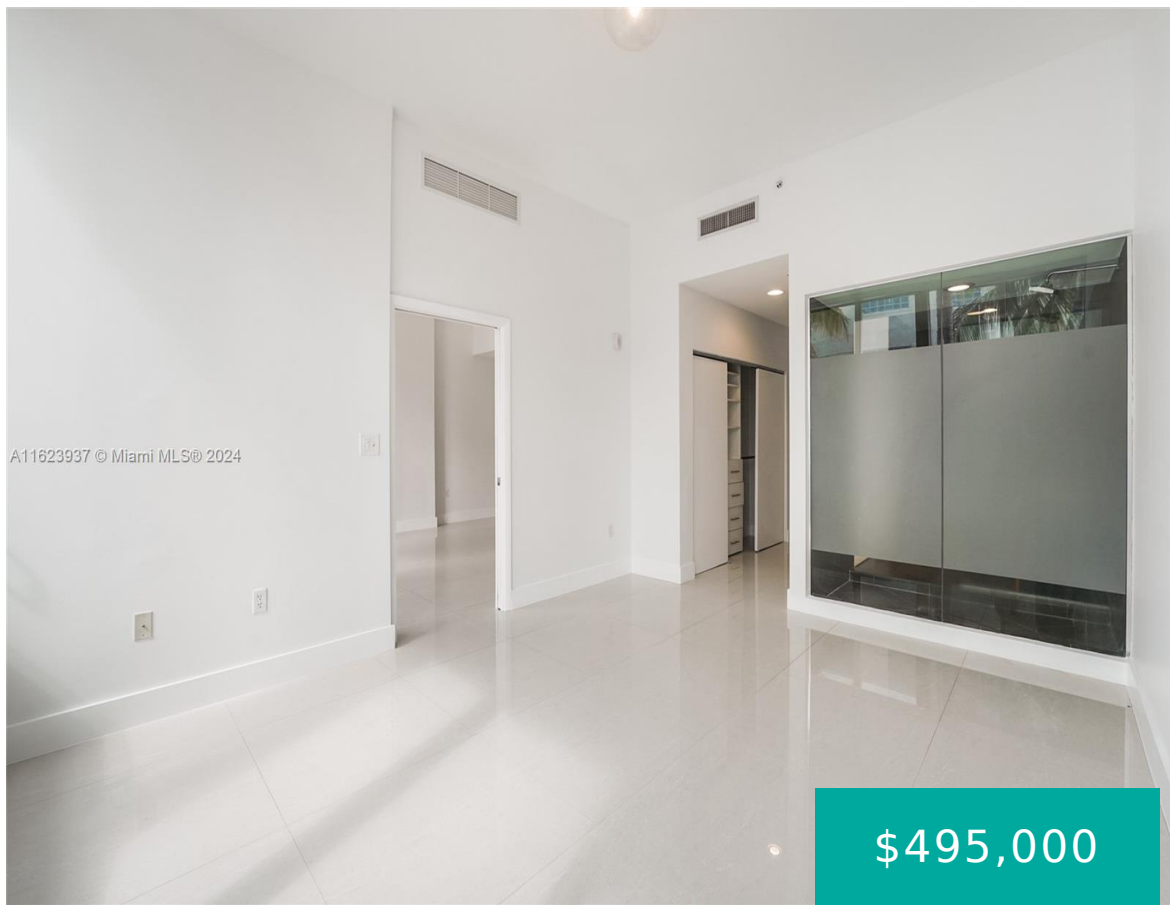


# 2100 PARK AVE MIAMI BEACH FL 33139 2100 PARK AVE 108

<https://www.cays.com>



ARTEPARK SOUTH CONDO UNIT 108 UNDIV 1.1676477800% INT IN COMMON ELEMENTS OFF REC 27736-2280 Pet owners dream condo! Rarely available, 1-bedroom 1.5-bath unit with a large private patio in the luxury boutique building, Artecity South, ideal for beach lovers and those with pets! Unit features spacious living room with high ceilings, open concept kitchen with [...]

- 1 bed
- 1, 2 bath
- Condominium, Residential
- Condominium, Residential
- Active
- 800 sq ft

## Basics



**Bathrooms Half:** 1

**Type:** Condominium, Residential

**Bedrooms:** 1 bed

**Half baths:** 1 half bath

**Area:** 800 sq ft

**View:** None

**County:** Miami-Dade

**Category:** Condominium, Residential

**Status:** Active

**Bathrooms:** 1, 2 bath

**Floors:** 5 floors

**Year built:** 2011

**Subdivision Name:** ARTEPARK SOUTH CONDO

---

## Property details

**Subdivision Name:** ARTEPARK SOUTH CONDO

**Parcel Number:** 33139

---

## Property Features

**Parking Features:** Attached,Covered,Garage,OneSpace,Valet

**Cooling Y/N:** 1

**Heating Y/N:** 1

**View:** None

**Cooling:** CentralAir,Electric

**Heating:** Central,Electric

**Pets Allowed:** Conditional,Yes

**Stories Total:** 5

---

## Rooms & Units Description

**Unit Number:** 108

---

## Location Details

**County Or Parish:** Miami-Dade

---

## Building Details



**Architectural Style:** Other

**Construction Materials:** Block

**Floor covering:** Marble

---

## Amenities & Features

**Pool Features:** Association

**Security Features:**

ElevatorSecured,KeyCardEntry,LobbySecured

**Utilities:** CableAvailable

**Cooling:** CentralAir,Electric

**Heating:** Central,Electric

**Appliances:**

Dryer,Dishwasher,ElectricRange,Microwave,Refrigerator,Washer

**Parking Features:** Attached,Covered,Garage,OneSpace,Valet

**Association Amenities:** Clubhouse,FitnessCenter,Other,Pool,SpaHotTub,Elevators

**Window Features:** ImpactGlass

**Exterior Features:** Fence

**Interior Features:**

Bidet,BedroomOnMainLevel,FirstFloorEntry,LivingDiningRoom,MainLivingAreaEntryLevel

---

## Expenses, Fees & Taxes

**Association Fee:** \$531

**Tax Annual Amount:** \$7,048

**Tax Year:** 2024

---

## Fees & Taxes

**Association Fee:** 531

---

## Miscellaneous

**Association Fee Frequency:** Monthly

**Listing Terms:** Cash

**List Office Name:** BHHS EWM Realty

**Direction Faces:** South

---

## Miscellaneous

**Above Grade**

**Finished Area:**

Miami Beach, FL

**Virtual Tour URL:**

<https://www.propertypanorama.com/instaview/mia/A11623937>



---

# Courtesy of

**Office Name:** BHHS EWM Realty

