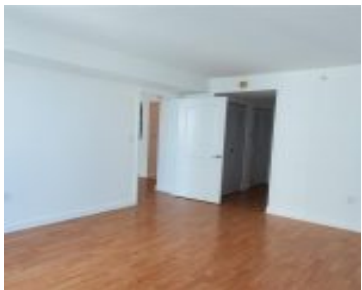
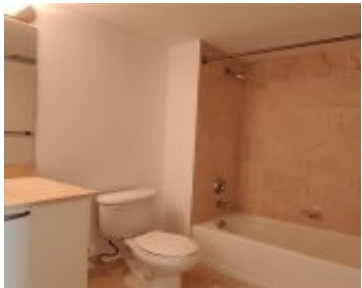
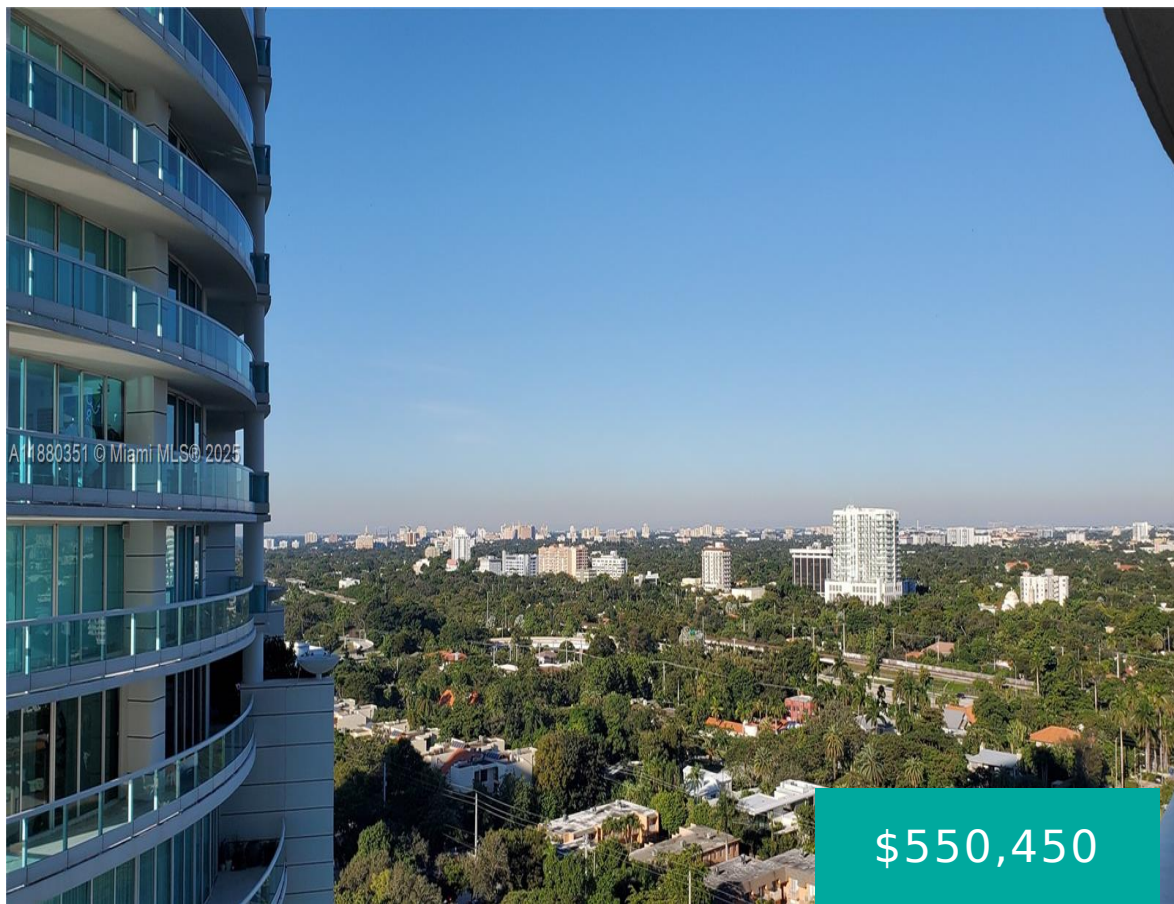


# 2101 BRICKELL AVE MIAMI FL 33129 2101 BRICKELL AVE 1808

<https://www.cays.com>



SKYLINE ON BRICKELL CONDO UNIT 1808 UNDIV 0.20873% INT IN COMMON ELEMENTS OFF REC 22848-4086 COC 23327-0560 02 2005 1 Bright and beautiful 1 bedroom, 1 bath unit with ocean and skyline views. Open layout, wood floors, kitchen with stainless steel appliances and washer and dryer in unit. Large walk-in closets and spacious balcony for [...]

- 1 bed
- 1, 1 bath
- Condominium, Residential
- Condominium, Residential
- Active
- 791 sq ft

## Basics



**Category:** Condominium, Residential

**Status:** Active

**Bathrooms:** 1, 1 bath

**Floors:** 1, 35 floor

**Year built:** 2004

**Subdivision Name:** SKYLINE ON BRICKELL CONDO

**Type:** Condominium, Residential

**Bedrooms:** 1 bed

**Half baths:** 0 half baths

**Area:** 791 sq ft

**View:** Ocean

**County:** Miami-Dade

---

## Property details

**Subdivision Name:** SKYLINE ON BRICKELL CONDO

**Parcel Number:** 33129

---

## Property Features

**Waterfront Features:** OceanFront

**Cooling:** CentralAir

**Garage Y/N:** 1

**Heating Y/N:** 1

**View:** Ocean

**Waterfront Y/N:** 1

**Stories Total:** 35

**Parking Features:** Attached,Garage,OneSpace,Valet

**Cooling Y/N:** 1

**Heating:** Central

**Pets Allowed:** Conditional,Yes

**View Y/N:** 1

**Stories:** 1

---

## Rooms & Units Description

**Unit Number:** 1808

---

## Location Details

**County Or Parish:** Miami-Dade

**Middle/Junior School:** Ponce De Leon

**Elementary School:** Coral Way

**High School:** Miami Senior



---

## Building Details

**Architectural Style:** HighRise

**Covered Spaces:** 1

**Levels:** One

**Construction Materials:** Block

**Garage Spaces:** 1

**Floor covering:** CeramicTile, Hardwood, Wood

---

## Amenities & Features

**Pool Features:** Heated

**Security Features:** KeyCardEntry,LobbySecured,SmokeDetectors

**Association Amenities:**

Marina,Clubhouse,FitnessCenter,Other,Playground,Pool,Sauna,SpaHotTub,TennisCourts,Elevators

**Utilities:** CableNotAvailable

**Cooling:** CentralAir

**Furnished:** Unfurnished

**Interior Features:** BedroomOnMainLevel,FirstFloorEntry,LivingDiningRoom,TubShower

**Parking Features:** Attached,Garage,OneSpace,Valet

**Patio & Porch Features:** Balcony,Open

**Waterfront Features:** OceanFront

**Window Features:** ImpactGlass

**Exterior Features:** Balcony,SecurityHighImpactDoors

**Heating:** Central

**Appliances:**

Dryer,Dishwasher,ElectricRange,Microwave,Refrigerator,Washer

---

## Nearby Schools

**Middle Or Junior School:** Ponce De Leon

**High School:** Miami Senior

**Elementary School:** Coral Way

---

## Expenses, Fees & Taxes

**Association Fee:** \$1,025

**Tax Year:** 2024

**Tax Annual Amount:** \$6,978

---

## Fees & Taxes

**Association Fee:** 1025

---

## Miscellaneous



**Association Fee Frequency:** Monthly **List Office Name:** Shelton and Stewart REALTORS

**Listing Terms:** Cash,Conventional **Direction Faces:** Southeast

---

## Miscellaneous

**Above Grade** **Virtual Tour URL:**

**Finished Area:** <https://www.propertypanorama.com/instaview/mia/A11880351>  
Miami, FL

---

## Courtesy of

**Office Name:** Shelton and Stewart REALTORS

