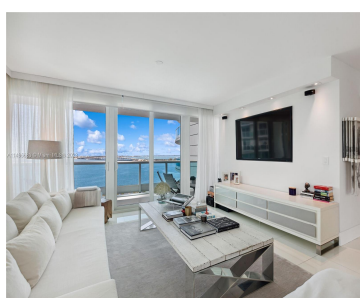


# 2127 BRICKELL AVE 1204 MIAMI FL 33129

<https://www.cays.com>



Impeccable renovated to perfection residence. Featuring unobstructed breathtaking panoramic views over looking Biscayne bay. Upgrades include an open kitchen concept. New impact windows, blending in perfectly with the oversized living, dining room and kitchen including high-end appliances Gaggenau Fridge Range oven, Microwave Coffee machine & Tri-Zone Wine Cooler. Rich finishes, crystal white marble floors. Contemporary [...]

- 2 beds
- 2 baths
- Condominium
- Residential
- Active
- 1610 sq ft

## Basics

**Bathrooms Full:** 2  
**Category:** Residential  
**Status:** Active  
**Bathrooms:** 2 baths  
**Year built:** 1993

**Lot Size Units:** Square Feet  
**Type:** Condominium  
**Bedrooms:** 2 beds  
**Area:** 1610 sq ft



---

## Property details

**Total Building Area:** 1610

**Disclosures:** Owner Is Listing Agent,Special Assessment

**Subdivision Name:** BRISTOL TOWER CONDO

**Parcel Number:** 01-41-39-055-0430

**Possession:** Closing & Funding

**Living Area Source:** Builder

---

## Property Features



**Building Features:** Exterior Lighting

**Interior Features:** Bidet, Bedroom on Main Level, Dual Sinks, First Floor Entry, Living/Dining Room, Main Living Area Entry Level, Separate Shower

**Window Features:** Blinds, Drapes, Impact Glass

**Parking Features:** Attached, Garage, Two or More Spaces, Valet

**Appliances:** Built-In Oven, Dryer, Dishwasher, Electric Range, Microwave, Refrigerator, Washer

**Construction Materials:** Block

**Cooling Y/N:** 1

**Flooring:** Marble

**Garage Spaces:** 1

**Heating:** Central

**Pets Allowed:** Size Limit, Yes

**View Y/N:** 1

**Entry Location:** 12

**Property Attached Y/N:** 1

**Attached Garage Y/N:** 1

**Utilities:** Cable Available

**Exterior Features:**

Balcony, Barbecue, Porch, Tennis Court(s), Security/High Impact Doors

**Waterfront Features:** Bay Front, Ocean Front

**Pool Features:** Association

**Security Features:** Complex Fenced, Secured Garage/Parking, Lobby Secured, Security Guard, Smoke Detector(s)

**Association Amenities:** Bike Storage, Clubhouse, Elevator(s), Fitness Center, Barbecue, Picnic Area, Playground, Pool, Sauna, Storage, Tennis Court(s), Vehicle Wash Area

**Cooling:** Central Air

**Covered Spaces:** 1

**Furnished:** Unfurnished

**Garage Y/N:** 1

**Heating Y/N:** 1

**View:** Bay, Ocean, Tennis Court, Water

**Entry Level:** 12

**Patio and Porch Features:** Balcony, Open, Wrap Around

**Waterfront Y/N:** 1

**Stories Total:** 40

---

## Rooms & Units Description

**Unit Number:** 1204

**Number of Units in the Community:** 147

---

## Location Details



**County Or Parish:** Miami-Dade County **Directions:** FROM I95 LOOK FOR BRICKELL AV . SIGNS CLOSE TO KEY BISCAYNE ENTRANCE.

**Elementary School:** Coral Way

**Middle/Junior School:** Ponce De Leon

**High School:** Miami Senior

---

## Fees & Taxes

**Tax Annual Amount:** 11189

**Tax Year:** 2023

**Tax Legal Description:** BRISTOL TOWER CONDO UNIT 1204 UNDIV 0.4534% INT IN COMMON ELEMENTS OFF REC 16070-1107 OR 18888-1229 1299 1 COC 25415-2978 03 2007 1

**Association Fee:** 6663

**Association Fee Frequency:** Quarterly

**Association Fee Includes:** Association Management,Amenities,Common Areas,Cable TV,Hot Water,Insurance,Pest Control,Sewer,Security,Water

---

## Miscellaneous

**Public Survey Township:** 1

**Public Survey Section:** 39

**Syndication Remarks:** EXPERIENCE LUXURY LIVING AT ITS FINEST WITH THIS STUNNING RENOVATED 2 BED, 2 BATH IN BRISTOL TOWER ! NEW IMPACT WINDOWS, PARKING & STORAGE.

**Year Built Details:** Resale

**Virtual Tour URL:** <https://www.propertypanorama.com/instaview/mia/A11496680>

---

## Courtesy of

**Office Name:** One Sotheby's International Re

