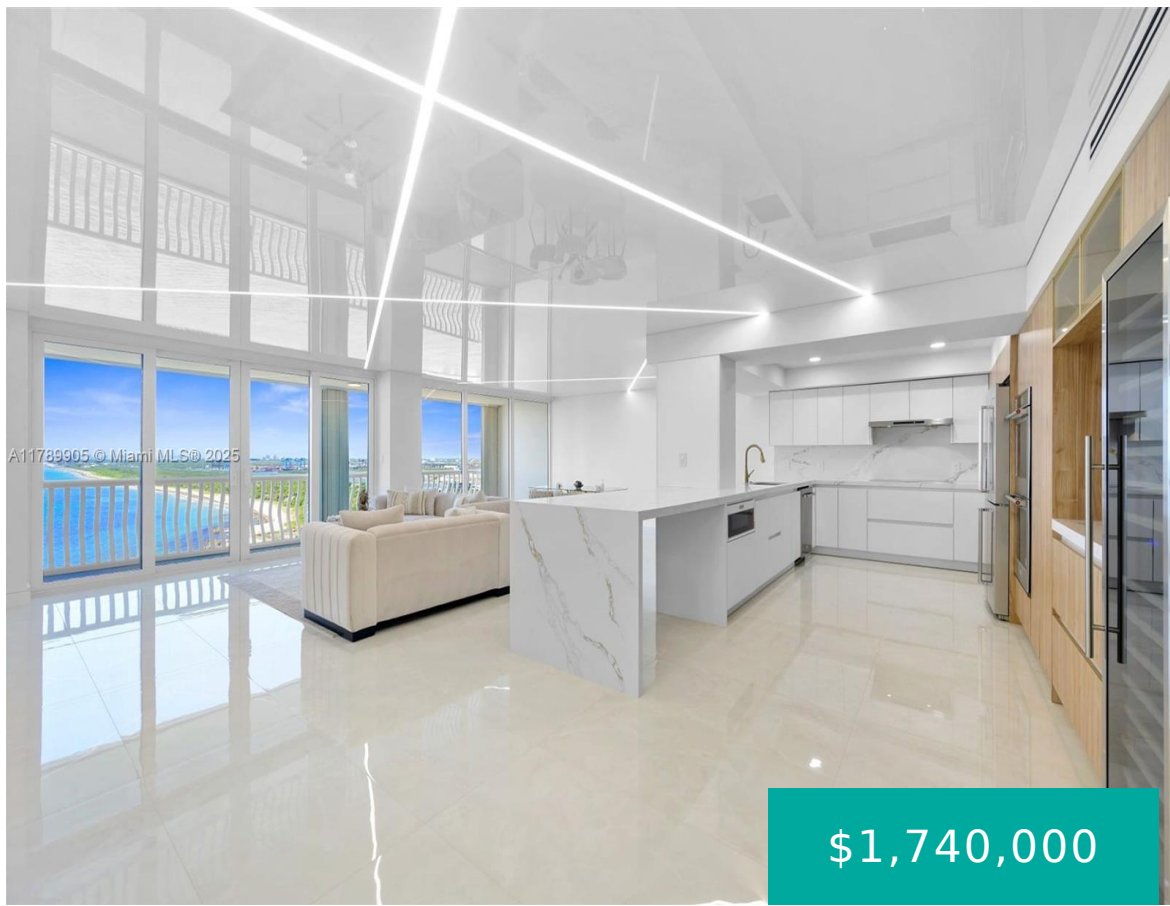


# 2200 OCEAN LN FORT LAUDERDALE FL 33316 2200 S OCEANLN 2204

<https://www.cays.com>



**\$1,740,000**



POINT OF AMERICAS PHASE II CONDO UNIT 2204 PER CDO BK/PG: 4097/424  
It's the view! This residence boasts a southern exposure, offering uninterrupted vistas stretching all the way to Miami. Nestled in Fort Lauderdale's best location, it sits right on the threshold of Port Everglades Inlet and the vast Atlantic Ocean. On the 22nd floor [...]

- 2 beds
- 2, 2 baths
- Condominium, Residential
- Condominium, Residential
- Active
- 2011 sq ft

## Basics



**Category:** Condominium, Residential

**Status:** Active

**Bathrooms:** 2, 2 baths

**Floors:** 31 floors

**Year built:** 1971

**Subdivision Name:** POINT OF AMERICAS PHASE

**Type:** Condominium, Residential

**Bedrooms:** 2 beds

**Half baths:** 0 half baths

**Area:** 2011 sq ft

**View:** Ocean

**County:** Broward

---

## Property details

**Subdivision Name:** POINT OF AMERICAS PHASE

**Parcel Number:** 33316

---

## Property Features

**Waterfront Features:** OceanAccess,OceanFront

**Cooling:** CentralAir

**Garage Y/N:** 1

**Heating Y/N:** 1

**View:** Ocean

**Waterfront Y/N:** 1

**Parking Features:** TwoOrMoreSpaces

**Cooling Y/N:** 1

**Heating:** Central

**Pets Allowed:** No

**View Y/N:** 1

**Stories Total:** 31

---

## Rooms & Units Description

**Unit Number:** 2204

---

## Location Details

**County Or Parish:** Broward



---

## Building Details

**Architectural Style:** HighRise

**Covered Spaces:** 2

**Construction Materials:** Block

**Garage Spaces:** 2

---

## Amenities & Features

**Parking Features:** TwoOrMoreSpaces

**Association Amenities:** Other

**Cooling:** CentralAir

**Heating:** Central

**Appliances:**

Dryer,Dishwasher,ElectricRange,ElectricWaterHeater,Microwave,Refrigerator

**Security Features:**

DoorMan,FireAlarm,SecuredGarageParking

**Waterfront Features:**

OceanAccess,OceanFront

**Exterior Features:** Barbecue,Other

**Interior Features:** Other

---

## Expenses, Fees & Taxes

**Association Fee:** \$5,922

**Tax Year:** 2024

**Tax Annual Amount:** \$20,168

---

## Fees & Taxes

**Association Fee:** 5922

---

## Miscellaneous

**Association Fee Frequency:** Quarterly **List Office Name:** Partnership Realty Inc.

**Listing Terms:** Cash,Conventional,Other

---

## Miscellaneous



**Above Grade  
Finished Area:**  
Fort Lauderdale, FL

**Virtual Tour URL:**  
<https://www.propertypanorama.com/instaview/mia/A11789905>

---

## Courtesy of

**Office Name:** Partnership Realty Inc.

