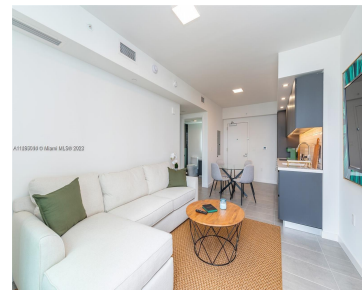


227 NE 2ND ST 1605 MIAMI FL 33132

<https://www.cays.com>



Introducing YOTELPAD Miami Condo, an investment opportunity in Downtown Miami. Crafted by YOTELPAD, this Airbnb-approved building offers solid returns. Fully furnished one-bedroom units on high floors maximize your investment. Enjoy amenities like a reliable pool, functional gym, pet spa, and social room with ping pong and pool tables. Strategically located, YOTELPAD offers a top-floor owners' [...]

- 1 bed
- 1 bath
- Condominium
- Residential
- Active
- 516 sq ft

Basics

Bathrooms Full: 1

Category: Residential

Status: Active

Bathrooms: 1 bath

Year built: 2022

Lot Size Units: Square Feet

Type: Condominium

Bedrooms: 1 bed

Area: 516 sq ft



Property details

Total Building Area: 516

Parcel Number: 01-42-06-070-0840

Subdivision Name: YOTELPAD MIAMI

Possession: Close Of Escrow

Property Features

Exterior Features: Security/High Impact Doors

Window Features: Blinds,Impact Glass

Parking Features: Valet

Appliances: Dryer,Electric Range,Water Purifier,Washer

Association Amenities: Bike Storage,Clubhouse,Elevator(s),Fitness Center,Pool,Spa/Hot Tub,Storage

Cooling: Central Air,Electric

Covered Spaces: 1

Garage Spaces: 1

Heating: Central,Electric

Pets Allowed: Conditional,Yes

Entry Level: 16

Property Attached Y/N: 1

Interior Features: Bedroom on Main Level,Eat-in Kitchen,First Floor Entry,Living/Dining Room

Pool Features: Association

Security Features: Elevator Secured,Key Card Entry,Lobby Secured

Architectural Style: High Rise

Construction Materials: Block

Cooling Y/N: 1

Flooring: Ceramic Tile

Garage Y/N: 1

Heating Y/N: 1

View: City,None

Entry Location: 16

Stories Total: 31

Rooms & Units Description

Unit Number: 1605

Location Details



County Or Parish: Miami-Dade County

Elementary School: Douglass; Frederick

Middle/Junior School: de Diego; Jose

High School: Washington; Brooker T

Fees & Taxes

Tax Annual Amount: 6326

Tax Year: 2023

Tax Legal Description: 227 NE 2ND STREET CONDO UNIT 1605 UNDIV
0.361697% INT IN COMMON ELEMENTS OFF REC 32930-4388

**Association Fee
Frequency:** Monthly

Association Fee Includes: Amenities,Cable TV,Hot Water,Maintenance
Structure,Sewer,Trash,Water

Miscellaneous

Public Survey Township: 1

**Public Survey
Section:** 6

Syndication Remarks: INTRODUCING THE BRAND NEW YOTELPAD MIAMI
CONDOMINIUM IN DOWNTOWN MIAMI.

**Year Built
Details:** New
Construction

Virtual Tour URL:

<https://www.propertypanorama.com/instaview/mia/A11493014>

Courtesy of

Office Name: BHHS EWM Realty

