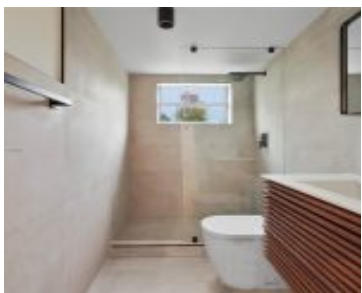
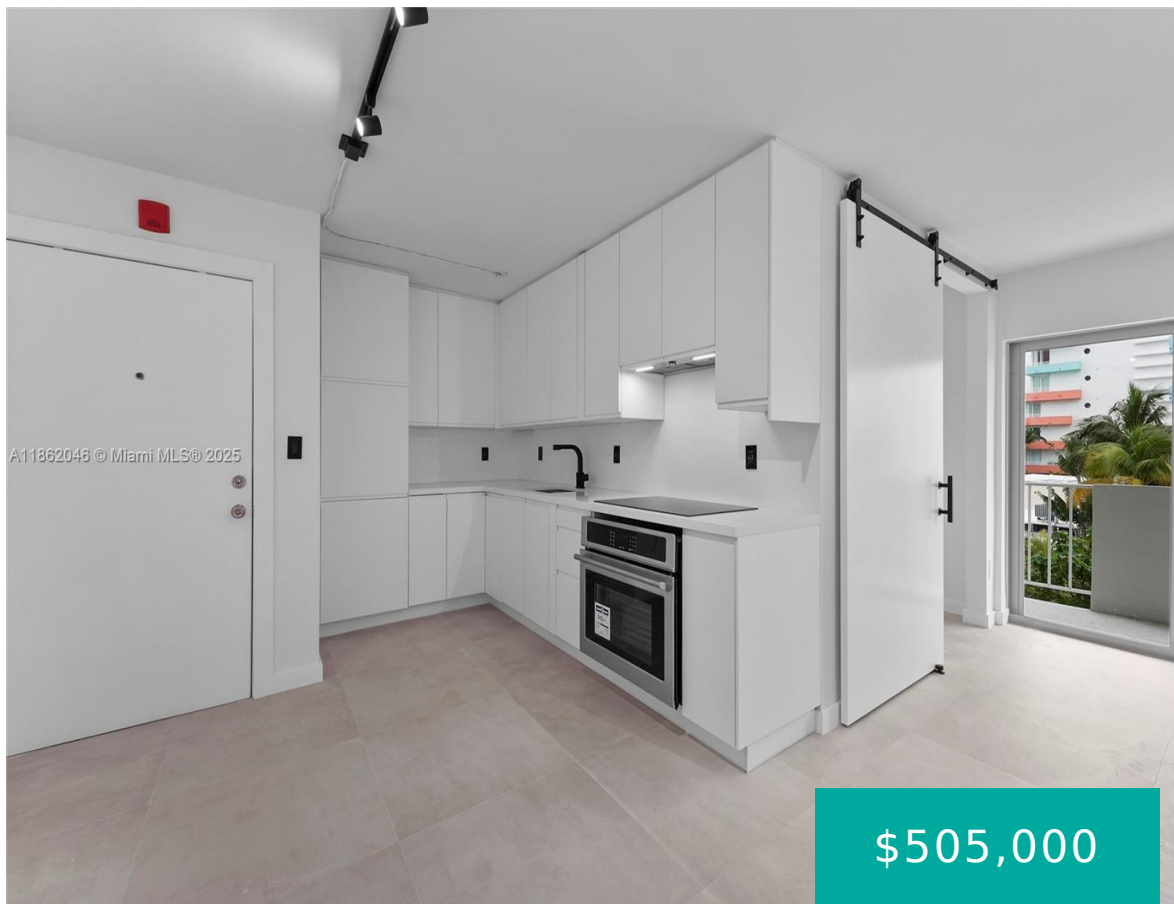


# 240 COLLINS AVE MIAMI BEACH FL 33139 240 COLLINS AVE 4A

<https://www.cays.com>



TERRACE VIEW TOWERS CONDO UNIT 4-A FOURTH FLOOR UNDIV 2.67% INT IN COMMON ELEMENTS CLERKS FILES 70R142234 & 70R213939 OR 14110-1235 0589 1 Don't miss this rare opportunity to own a beautifully renovated 2-bedroom in the most sought-after area of Miami Beach — South of Fifth. Just one block from the beach and a short [...]

- 1 bed
- 1, 1 bath
- Condominium, Residential
- Condominium, Residential
- Active
- 650 sq ft

## Basics



**Category:** Condominium, Residential

**Status:** Active

**Bathrooms:** 1, 1 bath

**Floors:** 7 floors

**Year built:** 1970

**Subdivision Name:** TERRACE VIEW TOWERS CONDO

**Type:** Condominium, Residential

**Bedrooms:** 1 bed

**Half baths:** 0 half baths

**Area:** 650 sq ft

**View:** Garden

**County:** Miami-Dade

---

## Property details

**Subdivision Name:** TERRACE VIEW TOWERS CONDO

**Parcel Number:** 33139

---

## Property Features

**Parking Features:** Covered,OneSpace,GarageDoorOpener

**Cooling Y/N:** 1

**Heating:** Central

**Pets Allowed:** Conditional,Yes

**Stories Total:** 7

**Cooling:** CentralAir

**Garage Y/N:** 1

**Heating Y/N:** 1

**View:** Garden

---

## Rooms & Units Description

**Unit Number:** 4A

---

## Location Details

**County Or Parish:** Miami-Dade

**Middle/Junior School:** Nautilus

**Elementary School:** South Pointe

**High School:** Miami Beach



---

## Building Details

**Architectural Style:** None

**Covered Spaces:** 1

**Floor covering:** Tile

**Construction Materials:** Block

**Garage Spaces:** 1

---

## Amenities & Features

**Parking Features:**

Covered,OneSpace,GarageDoorOpener

**Patio & Porch Features:** Balcony,Open

**Cooling:** CentralAir

**Heating:** Central

**Appliances:** Dryer,Washer

**Security Features:**

ClosedCircuitCameras,ComplexFenced,Other

**Association Amenities:** Elevators

**Exterior Features:** Balcony

**Interior Features:**

BuiltInFeatures,ClosetCabinetry,Elevator,Other

---

## Nearby Schools

**Middle Or Junior School:** Nautilus

**High School:** Miami Beach

**Elementary School:** South Pointe

---

## Expenses, Fees & Taxes

**Association Fee:** \$710

**Tax Year:** 2024

**Tax Annual Amount:** \$4,640

---

## Fees & Taxes

**Association Fee:** 710



---

## Miscellaneous

**Association Fee Frequency:** Monthly **List Office Name:** Luxe Properties

**Listing Terms:** Cash,Conventional

---

## Miscellaneous

**Above Grade Finished Area:** Miami Beach, FL  
**Virtual Tour URL:** <https://www.zillow.com/view-imx/eb8f1d5e-9244-40e8-8923-35570408540c?setAttribution=mls&wl=true&initialViewType=pano>

---

## Courtesy of

**Office Name:** Luxe Properties

