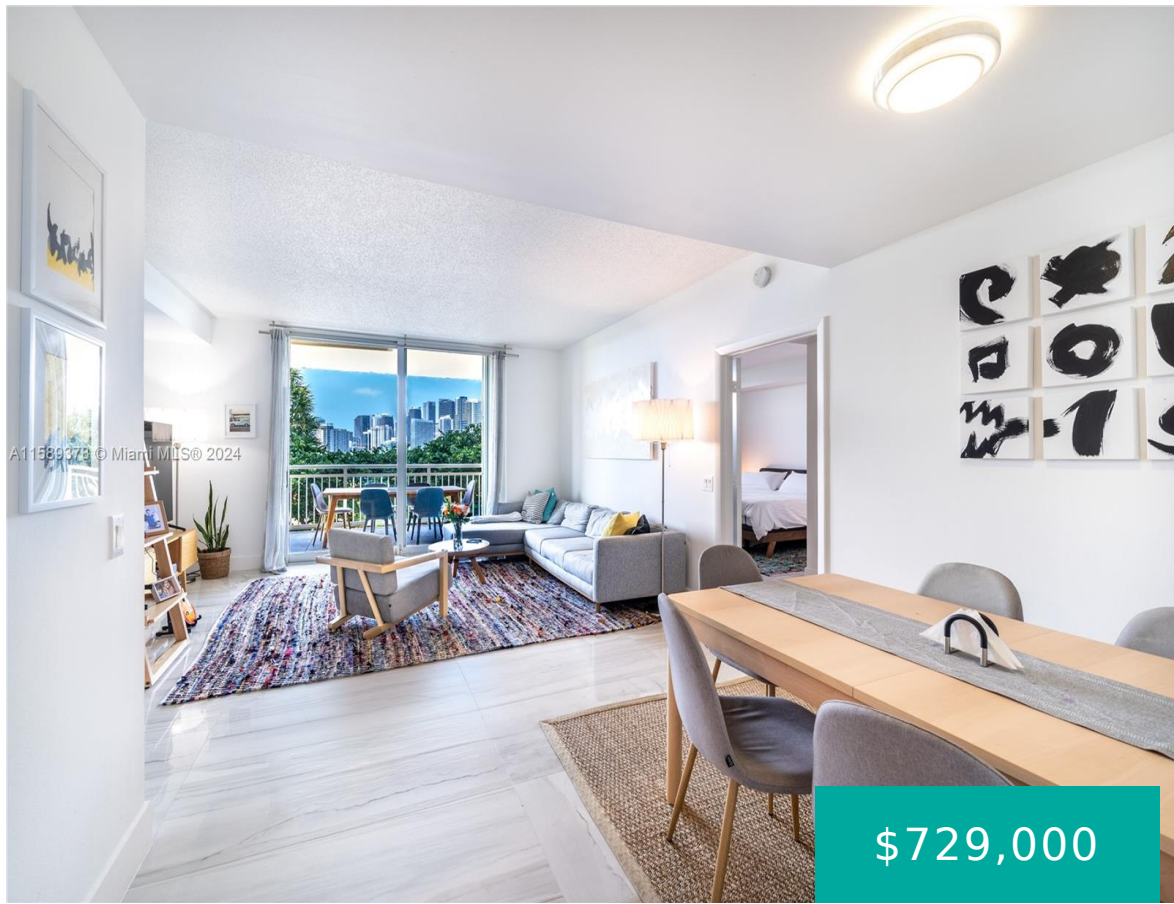


2475 BRICKELL AVE MIAMI FL 33129 2475 BRICKELL AVE 704

<https://www.cays.com>



\$729,000



THE METROPOLITAN CONDO UNIT 704 UNDIV .5597527 INT IN COMMON ELEMENTS OFF REC 19604-1579 OR 20855-4373 1102 4 Welcome to this elegant 2-bedroom, 2-bathroom condo in the prestigious Metropolitan Brickell. Situated on the 7th floor, Unit 704 offers stunning treelined city views. Experience luxurious living in a prime location where you can savor the refreshing [...]

- 2 beds
- 2, 2 baths
- Condominium, Residential
- Condominium, Residential
- Active
- 1140 sq ft

Basics



Category: Condominium, Residential

Status: Active

Bathrooms: 2, 2 baths

Floors: 27 floors

Year built: 2001

Subdivision Name: THE METROPOLITAN CONDO

Type: Condominium, Residential

Bedrooms: 2 beds

Half baths: 0 half baths

Area: 1140 sq ft

View: City,Garden,Pool

County: Miami-Dade

Property details

Subdivision Name: THE METROPOLITAN CONDO

Parcel Number: 33129

Property Features

Building Features: ExteriorLighting

Cooling: CentralAir

Garage Y/N: 1

Heating Y/N: 1

View: City,Garden,Pool

Parking Features: Assigned,Covered,Deeded

Cooling Y/N: 1

Heating: Electric

Pets Allowed: No,NoPetRestrictions

Stories Total: 27

Rooms & Units Description

Unit Number: 704

Location Details

County Or Parish: Miami-Dade

Middle/Junior School: Ponce De Leon

Elementary School: Coral Way

High School: Miami Senior



Building Details

Construction Materials: Block

Garage Spaces: 1

Covered Spaces: 1

Floor covering: Tile

Amenities & Features

Parking Features: Assigned,Covered,Deeded

Patio & Porch Features: Patio

Cooling: CentralAir

Heating: Electric

Interior Features:

BedroomOnMainLevel,DualSinks,EatInKitchen,Elevator,SplitBedrooms

Security Features: ComplexFenced,LobbySecured,FireSprinklerSystem

Association Amenities:

BusinessCenter,FitnessCenter,Barbecue,PicnicArea,TennisCourts,Elevators

Exterior Features: Barbecue,Courtyard,Patio,TennisCourts

Features: ExteriorLighting

Appliances: Dryer,Dishwasher,Disposal,Microwave,Refrigerator,Washer

Nearby Schools

Middle Or Junior School: Ponce De Leon

High School: Miami Senior

Elementary School: Coral Way

Expenses, Fees & Taxes

Association Fee: \$1,185

Tax Year: 2023

Tax Annual Amount: \$6,137

Fees & Taxes

Association Fee: 1185

Miscellaneous



Association Fee Frequency: Monthly **List Office Name:** RE/MAX Advance Realty II

Listing Terms: Conventional

Miscellaneous

Above Grade

Finished Area: Miami,
FL

Virtual Tour URL: <https://my.matterport.com/show/?m=bx7tRak2tUh>

Courtesy of

Office Name: RE/MAX Advance Realty II

