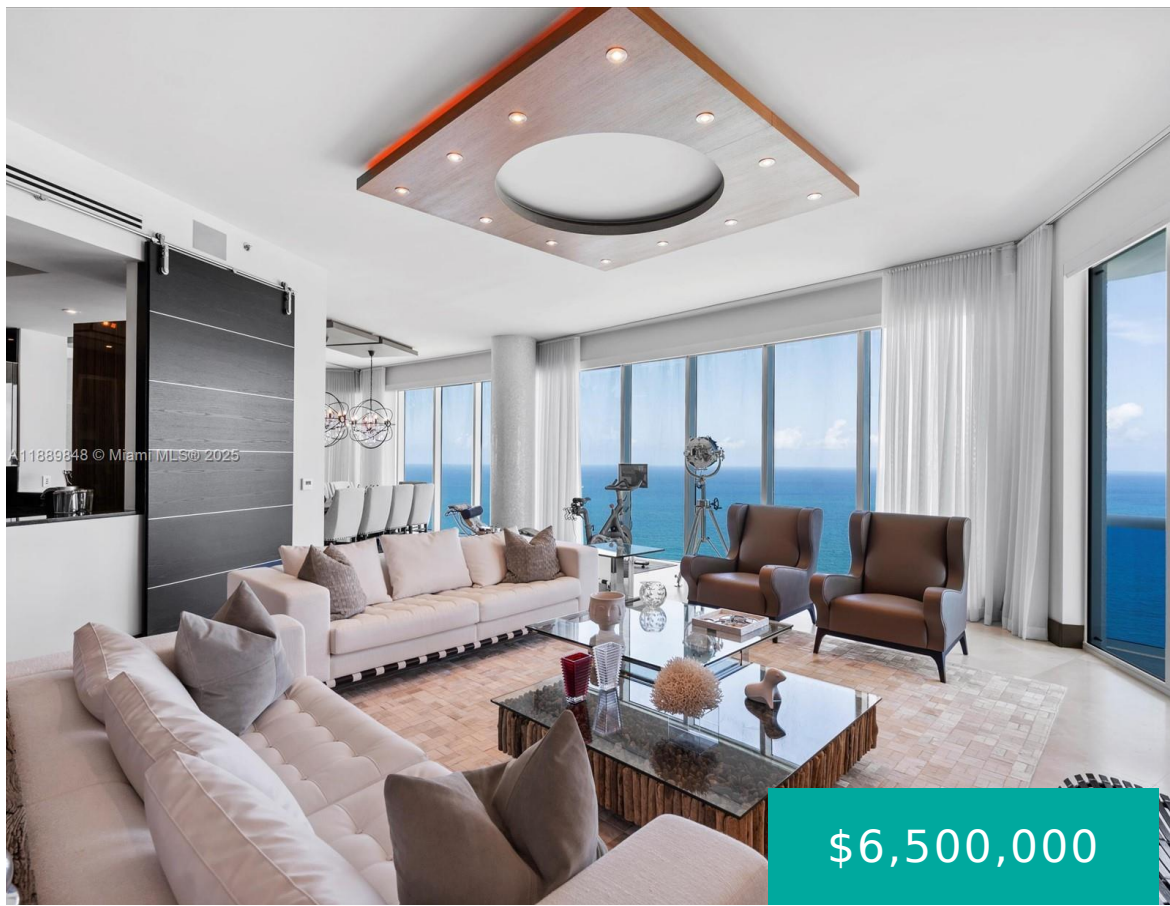


# 2711 OCEAN DR HOLLYWOOD FL 33019 2711 S OCEAN DR 4005

<https://www.cays.com>



2711 HOLLYWOOD BEACH CONDO UNIT 4005 PER CDO CIN #108804254  
Commanding the entire 40th floor of the iconic Trump Hollywood, this ultra-exclusive Sky Residence by Robert M. Swedroe embodies uncompromising luxury, privacy, and five-star living. Walls of glass frame endless ocean, Intracoastal, and sunset vistas, complemented by nearly 1,000 sq. ft. of terraces. A private [...]

- 5 beds
- 6, 7 baths
- Condominium, Residential
- Condominium, Residential
- Active
- 5086 sq ft

## Basics



**Bathrooms Half:** 1

**Type:** Condominium, Residential

**Bedrooms:** 5 beds

**Half baths:** 1 half bath

**Area:** 5086 sq ft

**Property Condition:** UpdatedRemodeled

**Subdivision Name:** 2711 HOLLYWOOD BEACH COND

**Category:** Condominium, Residential

**Status:** Active

**Bathrooms:** 6, 7 baths

**Floors:** 41 floors

**Year built:** 2009

**View:** Bay,Ocean

**County:** Broward

---

## Property details

**Subdivision Name:** 2711 HOLLYWOOD BEACH COND

**Parcel Number:** 33019

---

## Property Features

**Waterfront Features:**

Bayfront,OceanAccess,OceanFront

**Cooling:** CentralAir

**Garage Y/N:** 1

**Heating Y/N:** 1

**View:** Bay,Ocean

**Waterfront Y/N:** 1

**Parking Features:**

Assigned,TwoOrMoreSpaces

**Cooling Y/N:** 1

**Heating:** Central

**Pets Allowed:** NoPetRestrictions,Yes

**View Y/N:** 1

**Stories Total:** 41

---

## Rooms & Units Description

**Unit Number:** 4005

---

## Location Details

**County Or Parish:** Broward

**High School:** Hallandale High

**Elementary School:** Hollywood Centl



---

## Building Details

**Architectural Style:** HighRise

**Covered Spaces:** 10

**Floor covering:** Marble

**Construction Materials:** Block

**Garage Spaces:** 10

---

## Amenities & Features

**Pool Features:** Association

**Security Features:** SecuritySystem,DoorMan

**Association Amenities:**

BasketballCourt,BusinessCenter,Elevators,Barbecue,PicnicArea,Pool,Sauna,SpaHotTub,TennisCourts

**Cooling:** CentralAir

**Heating:** Central

**Appliances:** Dryer,Dishwasher,Disposal,Washer

**Parking Features:** Assigned,TwoOrMoreSpaces

**Patio & Porch Features:** Balcony,Open

**Waterfront Features:** Bayfront,OceanAccess,OceanFront

**Exterior Features:** Balcony

**Interior Features:**

WetBar,ClosetCabinetry,Elevator,CustomMirrors,WalkInClosets

---

## Nearby Schools

**Elementary School:** Hollywood Centl

**High School:** Hallandale High

---

## Expenses, Fees & Taxes

**Association Fee:** \$5,269

**Tax Year:** 2024

**Tax Annual Amount:** \$95,701

---

## Fees & Taxes

**Association Fee:** 5269

---

## Miscellaneous



**Association Fee Frequency:** Monthly **List Office Name:** Compass Florida, LLC

**Listing Terms:** Cash,Conventional

---

## Miscellaneous

**Above Grade**

**Virtual Tour URL:**

**Finished Area:**

<https://www.propertypanorama.com/instaview/mia/A11889848>

Hollywood, FL

---

## Courtesy of

**Office Name:** Compass Florida, LLC

