

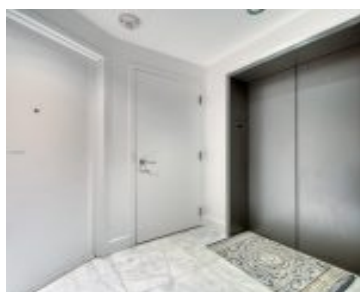
2900 7TH AVE MIAMI FL 33137 2900 NE 7TH AVE 405

<https://www.cays.com>



A11852165 © Miami MLS® 2025

\$1,100,000



BISCAYNE BEACH CONDO UNIT 405 UNDIV 0.2409% INT IN COMMON
 ELEMENTS OFF REC 29011-2730 Experience breathtaking Biscayne Bay views
 from this 2 bed + den, 3 bath residence at Biscayne Beach. Featuring a
 private elevator, floor-to-ceiling windows with automatic shades, Miele
 appliances, and granite countertops, this condo combines elegance with
 comfort. Resort-style amenities include 2 [...]

- 2 beds
- 3, 3 baths
- Condominium, Residential
- Condominium, Residential
- Active
- 1251 sq ft

Basics



Category: Condominium, Residential

Status: Active

Bathrooms: 3, 3 baths

Floors: 52 floors

Year built: 2017

Subdivision Name: BISCAYNE BEACH CONDO

Type: Condominium, Residential

Bedrooms: 2 beds

Half baths: 0 half baths

Area: 1251 sq ft

View: Bay

County: Miami-Dade

Property details

Subdivision Name: BISCAYNE BEACH CONDO

Parcel Number: 33137

Property Features

Waterfront Features:

Bayfront

Parking Features:

Assigned,Covered,OneSpace,GarageDoorOpener

Cooling: CentralAir,CeilingFans

Cooling Y/N: 1

Garage Y/N: 1

Heating: Central

Heating Y/N: 1

Pets Allowed: DogsOk,Yes

View: Bay

View Y/N: 1

Waterfront Y/N: 1

Stories Total: 52

Rooms & Units Description

Unit Number: 405

Location Details

County Or Parish: Miami-Dade



Building Details

Architectural Style: HighRise

Covered Spaces: 1

Floor covering: CeramicTile

Construction Materials: Block

Garage Spaces: 1

Amenities & Features

Pool Features: Association

Security Features:

DoorMan,ElevatorSecured,SecuredGarageParking,KeyCardEntry,SecurityGuard,FireSprinklerSystem,SmokeDetectors

Association Amenities:

BikeStorage,BusinessCenter,Clubhouse,FitnessCenter,Barbecue,PicnicArea,Playground,Pool,Sauna,SpaHotTub,Trails,Elevators

Window Features: ImpactGlass

Exterior Features: Patio

Interior Features:

DualSinks,EntranceFoyer,EatInKitchen,LivingDiningRoom,SplitBedrooms,SeparateShower,WalkInClosets,Elevator

Parking Features: Assigned,Covered,OneSpace,GarageDoorOpener

Patio & Porch Features: Patio

Waterfront Features: Bayfront

Cooling: CentralAir,CeilingFans

Heating: Central

Appliances:

Dryer,Dishwasher,ElectricRange,ElectricWaterHeater,Disposal,Microwave,Refrigerator,Washer

Expenses, Fees & Taxes

Association Fee: \$1,792

Tax Annual Amount: \$15,422

Tax Year: 2024

Fees & Taxes

Association Fee: 1792

Miscellaneous

Association Fee Frequency: Monthly **List Office Name:** Luxe Properties

Listing Terms: Cash,Conventional

Miscellaneous



Above Grade **Virtual Tour URL:**
Finished Area: <https://www.propertypanorama.com/instaview/mia/A11852165>
Miami, FL

Courtesy of

Office Name: Luxe Properties

