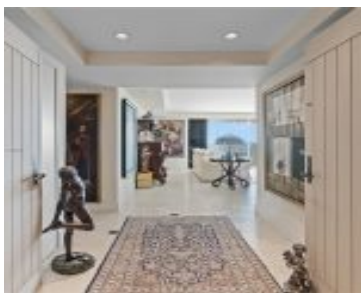


3 GROVE ISLE DR MIAMI FL 33133 3 GROVE ISLE DR C1610

<https://www.cays.com>



GROVE ISLE CONDO UNIT C-1610 UNDIV .2281% INT IN COMMON ELEMENTS
 OFF REC 10279-195 OR 19802-3933 0701 1 COC 25811-2479 05 2007 1
 Indulge in luxury island living at Grove Isle in Coconut Grove! This stunning corner unit boasts breathtaking water and sunset views from every room, framed by floor-to-ceiling windows. Entertain effortlessly on the [...]

- 3 beds
- 2, 3 baths
- Condominium, Residential
- Condominium, Residential
- Active
- 2424 sq ft

Basics



Bathrooms Half: 1

Type: Condominium, Residential

Bedrooms: 3 beds

Half baths: 1 half bath

Area: 2424 sq ft

View: Bay, City, Ocean

County: Miami-Dade

Category: Condominium, Residential

Status: Active

Bathrooms: 2, 3 baths

Floors: 18 floors

Year built: 1981

Subdivision Name: GROVE ISLE CONDO

Property details

Subdivision Name: GROVE ISLE CONDO

Parcel Number: 33133

Property Features

Building Features: ExteriorLighting

Waterfront Features:

Bayfront, NoFixedBridges, OceanAccess, Seawall

Parking Features:

Guest, TwoOrMoreSpaces

Cooling: CentralAir, Electric

Cooling Y/N: 1

Garage Y/N: 1

Heating: Central, Electric

Heating Y/N: 1

Pets Allowed: Conditional, Yes

View: Bay, City, Ocean

View Y/N: 1

Waterfront Y/N: 1

Stories Total: 18

Rooms & Units Description

Unit Number: C1610

Location Details



County Or Parish: Miami-Dade
Elementary School: Keybiscayne
High School: Coral Gables

Directions: GPS - 3 Grove Isle Dr
Middle/Junior School: Ponce De Leon

Building Details

Architectural Style: HighRise

Covered Spaces: 2

Floor covering: Carpet, Marble

Construction Materials: Block

Garage Spaces: 2

Amenities & Features

Pool Features: Heated

Security Features: ComplexFenced,DoorMan,SecurityGuard

Waterfront Features: Bayfront,NoFixedBridges,OceanAccess,Seawall

Window Features: Blinds

Exterior Features: StormSecurityShutters

Interior Features: ClosetCabinetry,Pantry

Features: ExteriorLighting

Parking Features: Guest,TwoOrMoreSpaces

Association Amenities: BeachRights,BoatDock,Marina,BikeStorage,BusinessCenter,Clubhouse,Elevators,FitnessCenter,Barbecue,PicnicArea,Playground,Pool,Trails,VehicleWashArea

Utilities: CableAvailable

Cooling: CentralAir,Electric

Heating: Central,Electric

Appliances: Dryer,Dishwasher,ElectricWaterHeater,Disposal,Microwave,Refrigerator,Washer

Nearby Schools

Middle Or Junior School: Ponce De Leon

High School: Coral Gables

Elementary School: Keybiscayne

Expenses, Fees & Taxes

Association Fee: \$3,275

Tax Year: 2024

Tax Annual Amount: \$23,911

Fees & Taxes

Association Fee: 3275



Miscellaneous

Association Fee Frequency: Monthly **List Office Name:** The Keyes Company

Listing Terms: Cash,Conventional

Miscellaneous

Above Grade **Virtual Tour URL:**

Finished Area: <https://www.propertypanorama.com/instaview/mia/A11809459>
Miami, FL

Courtesy of

Office Name: The Keyes Company

