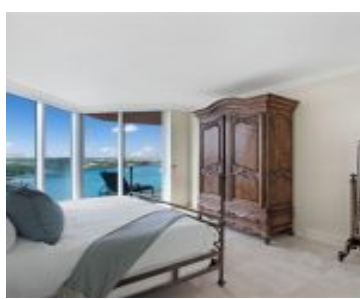


# 300 POINTE DR MIAMI BEACH FL 33139 300 S POINTE DR 1603

<https://www.cays.com>



PORTOFINO TOWER CONDO UNIT 1603 UNDIV 0.4705% INT IN COMMON ELEMENTS OFF REC 17405-2757 OR 19235-3435 0700 4 Highly desirable and rarely available 03 line at the iconic Portofino Tower. This large 3-bedroom, 2.5-bath residence offers southwest exposure with stunning views within a full-service luxury building. Features include two balconies and semi-private foyer. Enjoy 180 [...]

- 3 beds
- 2, 3 baths
- Condominium, Residential
- Condominium, Residential
- Active
- 2340 sq ft

## Basics



**Bathrooms Half:** 1

**Category:** Condominium, Residential

**Type:** Condominium, Residential **Status:** Active

**Bedrooms:** 3 beds

**Bathrooms:** 2, 3 baths

**Half baths:** 1 half bath

**Floors:** 43 floors

**Area:** 2340 sq ft

**Year built:** 1995

**View:** Ocean,Water

**Subdivision Name:** PORTOFINO TOWER CONDO

**County:** Miami-Dade

---

## Property details

**Subdivision Name:** PORTOFINO TOWER CONDO

**Parcel Number:** 33139

---

## Property Features

**Waterfront Features:** Bayfront,IntracoastalAccess

**Parking Features:** TwoOrMoreSpaces

**Cooling:** CentralAir,Electric

**Cooling Y/N:** 1

**Garage Y/N:** 1

**Heating:** Central,Electric

**Heating Y/N:** 1

**Pets Allowed:** Conditional,Yes

**View:** Ocean,Water

**View Y/N:** 1

**Waterfront Y/N:** 1

**Stories Total:** 43

---

## Rooms & Units Description

**Unit Number:** 1603

---

## Location Details

**County Or Parish:** Miami-Dade

**Elementary School:** South Pointe

**Middle/Junior School:** Nautilus

**High School:** Miami Beach



---

# Building Details

**Architectural Style:** HighRise

**Covered Spaces:** 1

**Floor covering:** Marble

**Construction Materials:** Block

**Garage Spaces:** 1

---

## Amenities & Features

**Pool Features:** Heated

**Security Features:** DoorMan,LobbySecured,SecurityGuard,SmokeDetectors

**Association Amenities:** BusinessCenter,FitnessCenter,Barbecue,PicnicArea,Pool,SpaHotTub,TennisCourts

**Window Features:** Other,Sliding

**Exterior Features:** Balcony

**Interior Features:**

BedroomOnMainLevel,DualSinks,EatInKitchen,FamilyDiningRoom,GardenTubRomanTub,KitchenIsland,SplitBedrooms,SeparateShower,WalkInClosets,Elevator

**Parking Features:** TwoOrMoreSpaces

**Patio & Porch Features:** Balcony,Open

**Waterfront Features:** Bayfront,IntracoastalAccess

**Cooling:** CentralAir,Electric

**Heating:** Central,Electric

**Appliances:**

Dryer,Dishwasher,ElectricRange,ElectricWaterHeater,Disposal,IceMaker,Microwave,Refrigerator,SelfCleaningOven,Washer

---

# Nearby Schools

**Middle Or Junior School:** Nautilus

**High School:** Miami Beach

**Elementary School:** South Pointe

---

# Expenses, Fees & Taxes

**Association Fee:** \$4,260

**Tax Year:** 2024

**Tax Annual Amount:** \$15,613

---

# Fees & Taxes

**Association Fee:** 4260

---

# Miscellaneous

**Association Fee Frequency:** Monthly **List Office Name:** Compass Florida, LLC

**Listing Terms:** Cash,Conventional



---

## Miscellaneous

**Above Grade Finished Area:** Miami Beach, FL

---

## Courtesy of

**Office Name:** Compass Florida, LLC

