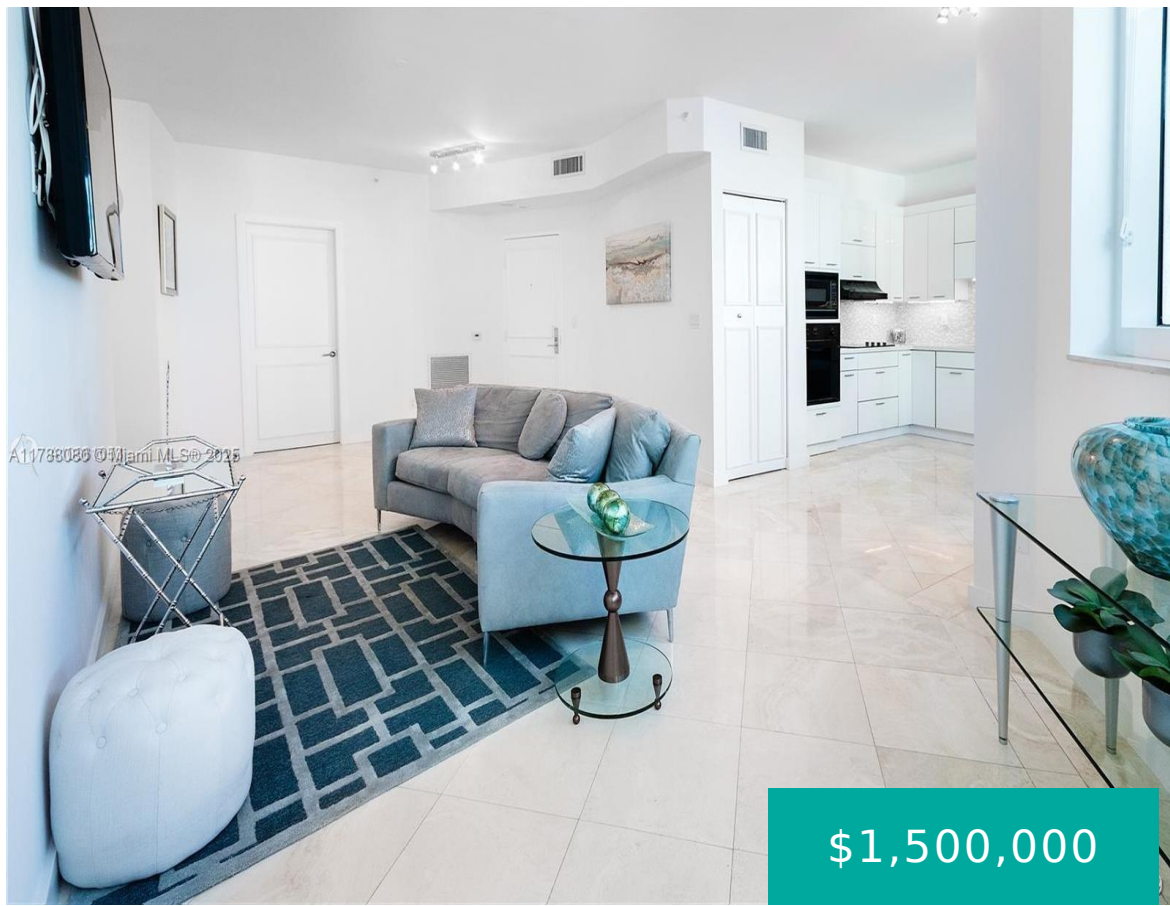


300 POINTE DR MIAMI BEACH FL 33139 300 S POINTE DR 909

<https://www.cays.com>



PORTOFINO TOWER CONDO UNIT 909 UNDIV 0.2185% INT IN COMMON ELEMENTS OFF REC 17405-2757 OR 20409-0295 0502 1 Feel the fresh ocean breeze blow through the open windows of this stunning 1 Bedroom/1.5 Bath. with water views at Portofino. This unit has high ceilings (10 ft) & comes with travertine in the living area, hardwood [...]

- 1 bed
- 1, 2 bath
- Condominium, Residential
- Condominium, Residential
- Active
- 1090 sq ft

Basics



Bathrooms Half: 1

Category: Condominium, Residential

Type: Condominium, Residential **Status:** Active

Bedrooms: 1 bed

Bathrooms: 1, 2 bath

Half baths: 1 half bath

Floors: 44 floors

Area: 1090 sq ft

Year built: 1996

View: Ocean,Other

Subdivision Name: PORTOFINO TOWER CONDO

County: Miami-Dade

Property details

Subdivision Name: PORTOFINO TOWER CONDO

Parcel Number: 33139

Property Features

Waterfront Features: OceanFront

Parking Features: Assigned,Other,OneSpace,Valet

Cooling: CentralAir

Cooling Y/N: 1

Garage Y/N: 1

Heating: Central

Heating Y/N: 1

Pets Allowed: Conditional,Yes

View: Ocean,Other

View Y/N: 1

Waterfront Y/N: 1

Stories Total: 44

Rooms & Units Description

Unit Number: 909

Location Details

County Or Parish: Miami-Dade

Elementary School: South Pointe

Middle/Junior School: Nautilus



Building Details

Architectural Style: HighRise

Covered Spaces: 1

Floor covering: Marble, Parquet

Construction Materials: Block

Garage Spaces: 1

Amenities & Features

Pool Features: Association

Security Features: ClosedCircuitCameras,ComplexFenced,DoorMan,ElevatorSecured,SecuredGarageParking,Intercom,KeyCardEntry,LobbySecured,Other,SecurityGuard,SmokeDetectors

Waterfront Features: OceanFront

Exterior Features: Barbecue,SecurityHighImpactDoors,Other,TennisCourts

Interior Features: Bidet,BuiltInFeatures,ClosetCabinetry,DualSinks,HighCeilings,JettedTub,Other,TubShower

Parking Features: Assigned,Other,OneSpace,Valet

Association Amenities: Cabana,Clubhouse,Elevators,FitnessCenter,Other,Playground,Pool,Sauna,Storage,TennisCourts,Trash,VehicleWashArea

Cooling: CentralAir

Heating: Central

Appliances: BuiltInOven,Dryer,Dishwasher,ElectricRange,ElectricWaterHeater,Disposal,Microwave,Other,Refrigerator,SelfCleaningOven,Washer

Nearby Schools

Middle Or Junior School: Nautilus

Elementary School: South Pointe

Expenses, Fees & Taxes

Association Fee: \$1,985

Tax Year: 2024

Tax Annual Amount: \$15,620

Fees & Taxes

Association Fee: 1985

Miscellaneous

Association Fee Frequency: Monthly

Listing Terms: Cash,Conventional,Cryptocurrency

List Office Name: LoKation

Attribution Contact: 786-630-9419



Miscellaneous

Above Grade **Virtual Tour URL:**
Finished Area: <https://www.propertypanorama.com/instaview/mia/A11788080>
Miami Beach, FL

Courtesy of

Office Name: LoKation

