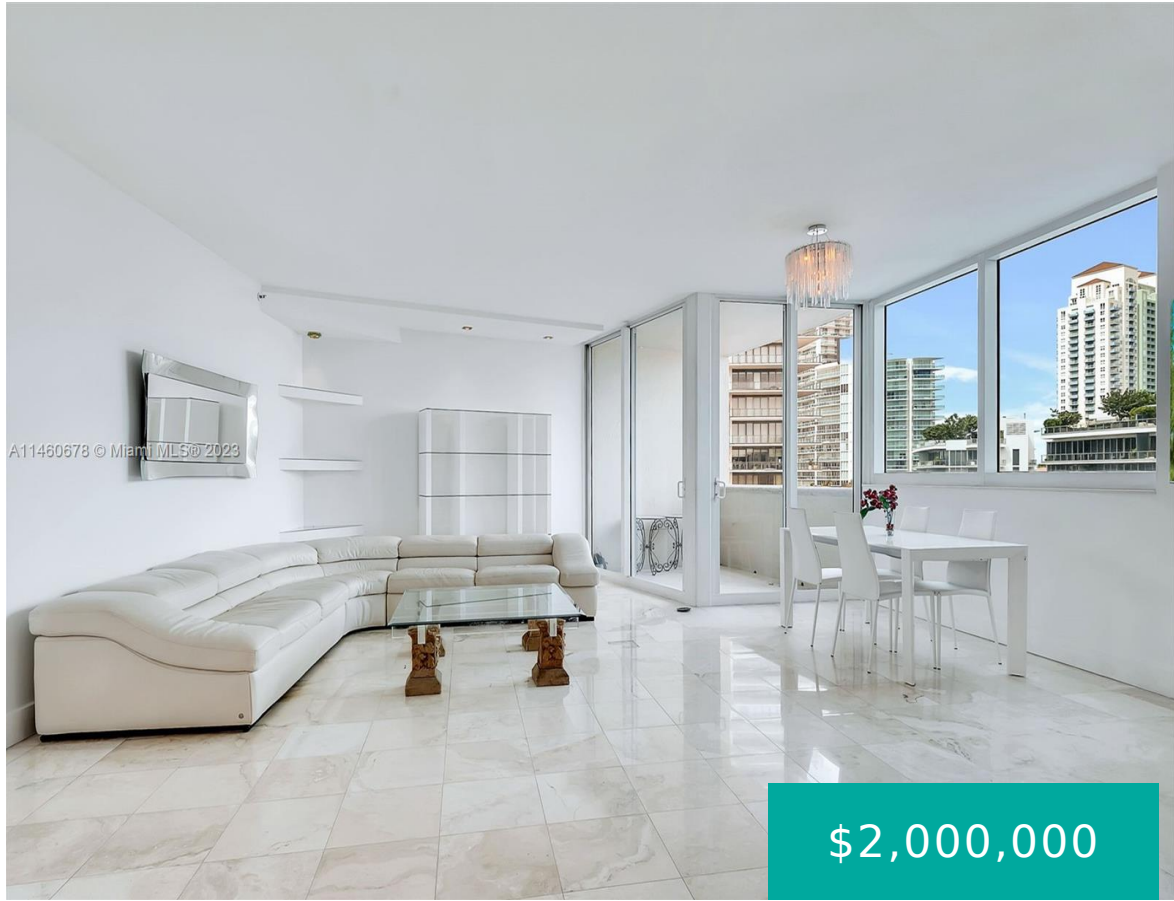


300 S POINTE DR 606 MIAMI BEACH FL 33139

<https://www.cays.com>



Beautiful two bedroom with an abundance of natural light. Well designed floor plan offers all the comforts of a home in south of fifth. South of fifth is a luxury neighborhood in South Beach offering ultra-high-end condominiums, top rated restaurants, beautiful sandy beaches, the Miami Beach Marina and South Pointe Park.

- 2 beds
- 2 baths
- Condominium
- Residential
- Active
- 1780 sq ft

Basics

Bathrooms Full: 2
Category: Residential
Status: Active
Bathrooms: 2 baths
Year built: 1996

Lot Size Units: Square Feet
Type: Condominium
Bedrooms: 2 beds
Area: 1780 sq ft



Property details

Total Building Area: 1780

Subdivision Name: PORTOFINO TOWER CONDO

Possession: Closing & Funding

Direction Faces: Northeast

Parcel Number: 02-42-10-013-1780

Property Features

Exterior Features: Balcony

Waterfront Features: Bay Front

Parking Features: Assigned, Guest, Valet

Appliances: Built-In
Oven, Dryer, Dishwasher, Microwave, Refrigerator, Washer

Association Amenities: Bike Storage, Fitness
Center, Other, Pool, Spa/Hot Tub, Tennis Court(s)

Cooling: Central Air, Electric

Covered Spaces: 1

Garage Spaces: 1

Heating: Central, Electric

Pets Allowed: Conditional, Yes

View Y/N: 1

Entry Location: 6

Property Attached Y/N: 1

Stories Total: 44

Interior Features:

Bidet, Bedroom on Main
Level, Closet Cabinetry, Dual
Sinks, Separate Shower, Bar

Pool Features: Association

Security Features: Complex
Fenced, Lobby
Secured, Security Guard

Architectural Style: High
Rise

Construction Materials:
Block

Cooling Y/N: 1

Flooring: Marble

Garage Y/N: 1

Heating Y/N: 1

View: City, Intercoastal, Ocean

Entry Level: 6

Patio and Porch Features:
Balcony, Open

Waterfront Y/N: 1

Utilities: Cable Available

Rooms & Units Description

Unit Number: 606



Location Details

County Or Parish: Miami-Dade County

Fees & Taxes

Tax Annual Amount: 15851

Tax Year: 2022

Tax Legal Description: PORTOFINO TOWER
CONDO UNIT 606 UNDIV 0.3551% INT IN COMMON
ELEMENTS OFF REC 17405-2757 OR 19369-3502
1100 1 COC 26246-3578 02 2008 4

Association Fee: 2555

Association Fee Frequency: Monthly

Association Fee Includes: Association
Management,Cable TV,Maintenance
Grounds,Pest Control,Pool(s),Water

Miscellaneous

Public Survey Township: 2

**Public
Survey
Section:** 10

Syndication Remarks: Beautiful two bedroom with an abundance of natural light at Portofino Tower in S. Beach. Well designed floor plan offers all the comforts of a home.

**Year Built
Details:**
Resale

Virtual Tour URL: <https://listings.mariocotera.com/sites/dwwnpwx/unbranded>

Courtesy of

Office Name: Brown Harris Stevens

