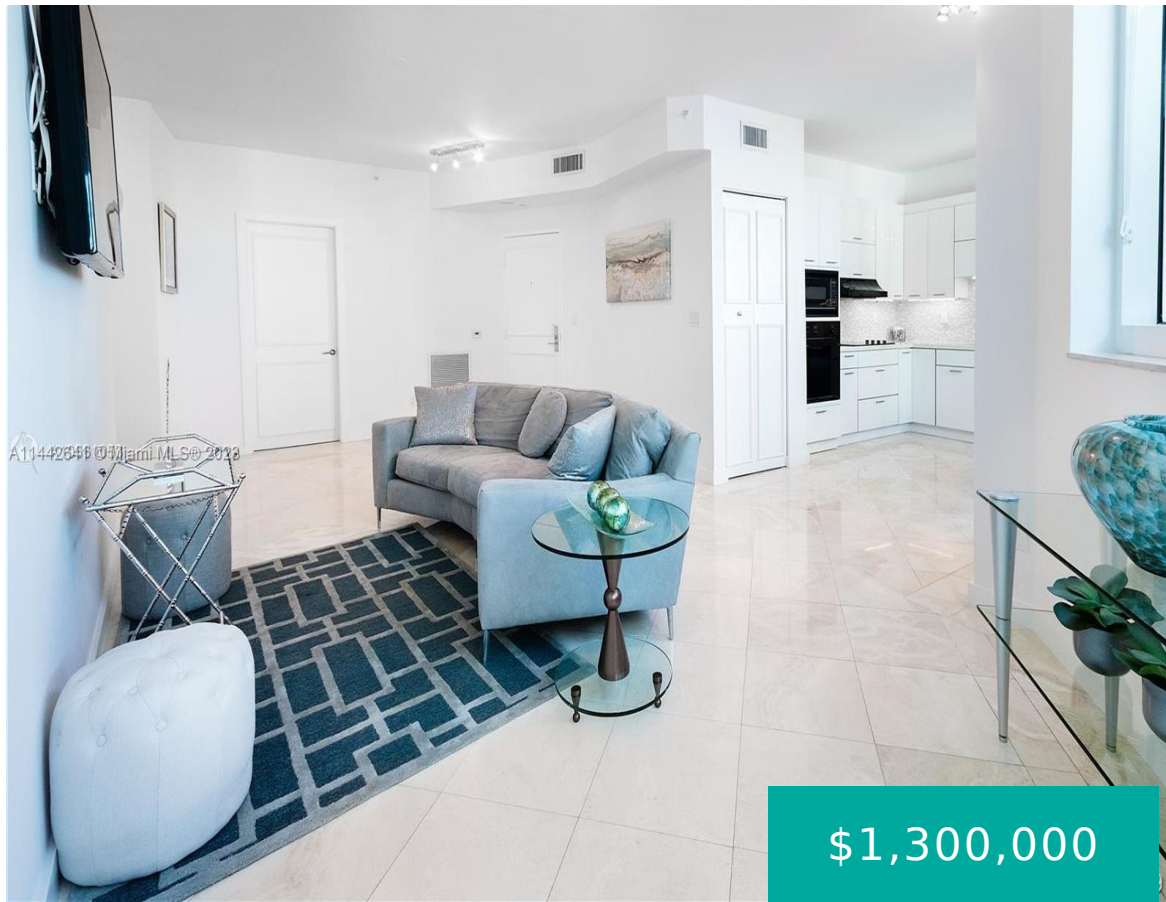


# 300 S POINTE DR 909 MIAMI BEACH FL 33139

<https://www.cays.com>



Best deal in the building!! Feel the fresh ocean breeze blow through the open windows of this stunning 1 Bedroom/1.5 Bath. with water views at Portofino. This unit comes with travertine in the living area, hardwood floors in the bedroom, an updated kitchen, a large master suite with a his&hers closet, a large bathroom with [...]

- 1 bed
- 2 baths
- Condominium
- Residential
- Active
- 1090 sq ft

## Basics

**Bathrooms Half:** 1

**Lot Size Units:** Square Feet

**Type:** Condominium

**Bedrooms:** 1 bed

**Area:** 1090 sq ft

**Bathrooms Full:** 1

**Category:** Residential

**Status:** Active

**Bathrooms:** 2 baths

**Year built:** 1996



---

## Property details

**Total Building Area:** 1090

**Subdivision Name:** PORTOFINO TOWER CONDO

**Parcel Number:** 02-42-10-013-2190 **Possession:** Closing & Funding

---

## Property Features

**Exterior Features:** Security/High Impact Doors

**Waterfront Features:** Other

**Parking Features:** Assigned,One Space

**Appliances:** Built-In Oven,Dryer,Dishwasher,Electric Range,Disposal,Ice Maker,Microwave,Refrigerator,Self Cleaning Oven,Water Purifier,Washer

**Association Amenities:** Bike Storage,Clubhouse,Elevator(s),Fitness Center,Other,Playground,Pool,Sauna,Storage,Tennis Court(s),Trash

**Cooling:** Central Air

**Covered Spaces:** 1

**Garage Spaces:** 1

**Heating:** Central

**Pets Allowed:** Conditional,Yes

**View Y/N:** 1

**Entry Location:** 9

**Stories Total:** 44

**Interior Features:** Built-in Features,Closet Cabinetry,Other

**Pool Features:** Association

**Security Features:** Smoke Detector(s)

**Architectural Style:** High Rise

**Construction Materials:** Block

**Cooling Y/N:** 1

**Flooring:** Tile,Wood

**Garage Y/N:** 1

**Heating Y/N:** 1

**View:** Ocean,Other,Water

**Entry Level:** 9

**Waterfront Y/N:** 1

---

## Rooms & Units Description

**Unit Number:** 909



---

## Location Details

**County Or Parish:** Miami-Dade County

**Elementary School:** South Pointe

**Directions:** Please use a GPS.

**Middle/Junior School:** Nautilus

---

## Fees & Taxes

**Tax Annual Amount:** 11603

**Tax Year:** 2022

**Tax Legal Description:**

PORTOFINO TOWER CONDO UNIT  
909 UNDIV 0.2185% INT IN  
COMMON ELEMENTS OFF REC  
17405-2757 OR 20409-0295 0502  
1

**Association Fee:** 1120

**Association Fee Frequency:**

Monthly

**Association Fee Includes:** Amenities,Cable  
TV,Maintenance Grounds,Maintenance  
Structure,Other,Sewer,Security,Trash,Water

---

## Miscellaneous

**Public Survey Township:** 2

**Public  
Survey  
Section:** 10

**Syndication Remarks:** Feel the fresh ocean breeze blow through the open windows of this stunning 1 Bedroom/1.5 Bath. with ocean view and a private balcony at Portofino!

**Year Built  
Details:**  
Resale

**Virtual Tour URL:** <https://www.propertypanorama.com/instaview/mia/A11442641>

---

## Courtesy of

**Office Name:** LoKation

