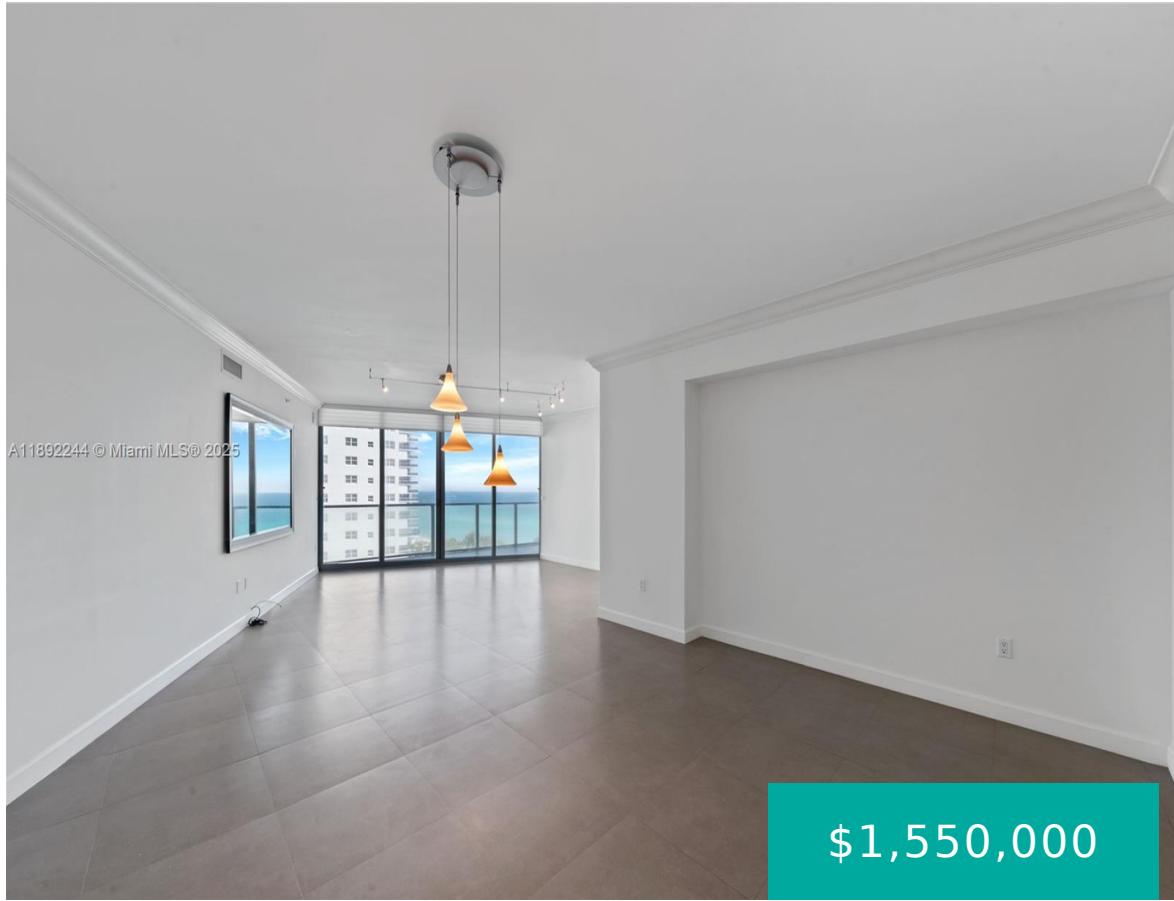


# 3101 OCEAN DR HOLLYWOOD FL 33019 3101 S OCEAN DR 707

<https://www.cays.com>



OCEAN PALMS CONDO UNIT 707 PER CDO BK/PG: 41428/1971 Take your PRIVATE elevator to INCREDIBLE OCEAN VIEWS ON BOTH THE NORTH AND THE SOUTH\*\*\*IMPECCABLE CONDO WITH ULTRA OPEN FLOOR PLAN WITH FLOOR TO CEILING WINDOWS AND DOORS..2650 sq feet featuring 2 gigantic bedrooms plus 3rd office/ bedroom, ocean views!! \*\*\*\*\*porcelain flooring ,hunter Douglass window treatments, [...]

- 3 beds
- 3, 4 baths
- Condominium, Residential
- Condominium, Residential
- Active
- 2627 sq ft

## Basics



**Bathrooms Half:** 1

**Type:** Condominium, Residential

**Bedrooms:** 3 beds

**Half baths:** 1 half bath

**Area:** 2627 sq ft

**View:** Intercoastal,Ocean

**County:** Broward

**Category:** Condominium, Residential

**Status:** Active

**Bathrooms:** 3, 4 baths

**Floors:** 24 floors

**Year built:** 2005

**Subdivision Name:** OCEAN PALMS CONDO

---

## Property details

**Subdivision Name:** OCEAN PALMS CONDO

**Parcel Number:** 33019

---

## Property Features

**Waterfront Features:** OceanFront

**Cooling:** CentralAir,Electric

**Garage Y/N:** 1

**Heating Y/N:** 1

**View:** Intercoastal,Ocean

**Waterfront Y/N:** 1

**Parking Features:** TwoOrMoreSpaces

**Cooling Y/N:** 1

**Heating:** Central,Electric

**Pets Allowed:** DogsOk,Yes

**View Y/N:** 1

**Stories Total:** 24

---

## Rooms & Units Description

**Unit Number:** 707

---

## Location Details

**County Or Parish:** Broward

**Elementary School:** Hollywood Centl

**Directions:** a1a

**High School:** Hallandale High



---

## Building Details

**Architectural Style:** HighRise

**Covered Spaces:** 2

**Floor covering:** CeramicTile

**Construction Materials:** Block

**Garage Spaces:** 2

---

## Amenities & Features

**Pool Features:** Association,Heated

**Security Features:** DoorMan,ElevatorSecured,SecuredGarageParking,SecurityGuard

**Association Amenities:** BeachRights,BilliardRoom,BikeStorage,Cabana,Clubhouse,FitnessCenter,Library,Pool,TennisCourts,Trash,Elevators

**Window Features:** ImpactGlass

**Exterior Features:** Balcony,SecurityHighImpactDoors

**Interior Features:**

BuiltInFeatures,BedroomOnMainLevel,BreakfastArea,ClosetCabinetry,EntranceFoyer,Elevator,FirstFloorEntry,LivingDiningRoom,SplitBedrooms,WalkInClosets

**Parking Features:**  
TwoOrMoreSpaces

**Patio & Porch Features:**  
Balcony,Open

**Waterfront Features:**  
OceanFront

**Cooling:**  
CentralAir,Electric

**Heating:** Central,Electric

**Appliances:**  
Dryer,Dishwasher,Disposal

---

## Nearby Schools

**Elementary School:** Hollywood Centl

**High School:** Hallandale High

---

## Expenses, Fees & Taxes

**Tax Annual Amount:** \$16,475

**Tax Year:** 2025

---

## Miscellaneous

**Association Fee Frequency:** Monthly **List Office Name:** The Keyes Company

**Listing Terms:** Conventional

---

## Miscellaneous



**Above Grade  
Finished Area:**  
Hollywood, FL

**Virtual Tour URL:**  
<https://www.propertypanorama.com/instaview/mia/A11892244>

---

## Courtesy of

**Office Name:** The Keyes Company

