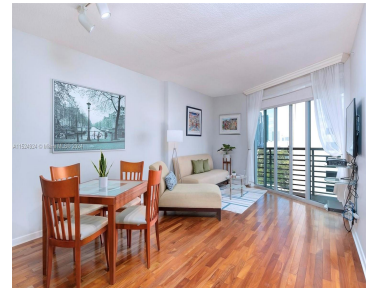
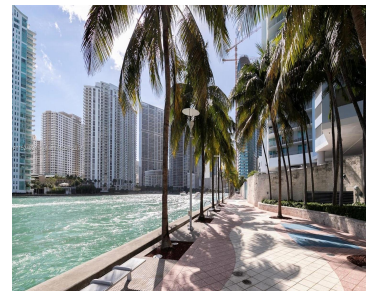
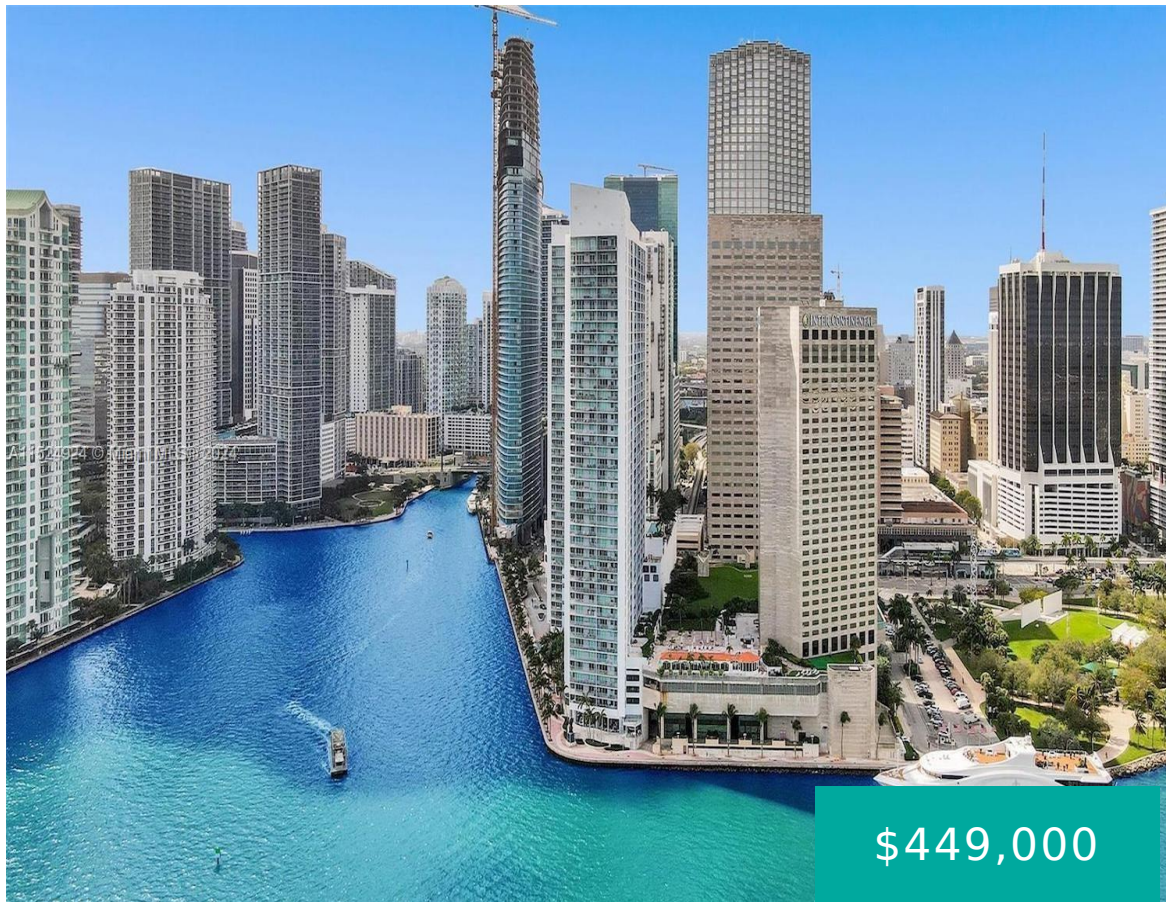


335 S BISCAYNE BLVD 1702 MIAMI FL 33131

<https://www.cays.com>



Discover an exquisite residence boasting mesmerizing vistas of both, the bay and the cityscape, ideally situated at One Miami East! The unit features timeless hardwood floors, a spacious walk-in closet, and a large balcony. Walk to Brickell City Center, fine dining restaurants, Whole Foods, Bayside, Miami Arena and much more. Quick drive to Wynwood Art [...]

- 1 bed
- 1 bath
- Condominium
- Residential
- Active
- 846 sq ft

Basics

Bathrooms Full: 1

Category: Residential

Status: Active

Bathrooms: 1 bath

Year built: 2005

Lot Size Units: Square Feet

Type: Condominium

Bedrooms: 1 bed

Area: 846 sq ft



Property details

Total Building Area: 846

Subdivision Name: ONE MIAMI EAST CONDO

Parcel Number: 01-42-06-065-0730

Possession: Close Of Escrow

Property Features

Exterior Features: Balcony

Waterfront Features: Bay Front

Parking Features: Assigned

Appliances: Built-In Oven,Dryer,Dishwasher,Electric Water Heater,Disposal,Ice Maker,Microwave,Refrigerator,Washer

Association Amenities: Business Center,Cabana,Clubhouse,Community Kitchen,Fitness Center,Pool,Sauna,Spa/Hot Tub,Trash,Elevator(s)

Cooling: Central Air

Covered Spaces: 1

Garage Spaces: 1

Heating: Central

Pets Allowed: Conditional,Yes

View Y/N: 1

Entry Location: 17

Property Attached Y/N: 1

Stories Total: 44

Interior Features: Other

Pool Features: Heated

Security Features: Complex Fenced,Door Man,Secured Garage/Parking

Architectural Style: High Rise

Construction Materials: Block

Cooling Y/N: 1

Flooring: Parquet,Wood

Garage Y/N: 1

Heating Y/N: 1

View: Bay,City

Entry Level: 17

Patio and Porch Features: Balcony,Open

Waterfront Y/N: 1

Utilities: Cable Available

Rooms & Units Description

Unit Number: 1702



Location Details

County Or Parish: Miami-Dade County

Fees & Taxes

Tax Annual Amount: 7358

Tax Year: 2023

Tax Legal Description: ONE MIAMI
EAST CONDO UNIT 1702 UNDIV 0.17%
INT IN COMMON ELEMENTS OFF REC
24030-4560 COC 24341-2929 02 2006
1

Association Fee: 1016

Association Fee Frequency: Monthly

Association Fee Includes: Amenities,Common
Areas,Cable TV,Internet,Parking,Pest
Control,Pool(s),Reserve
Fund,Sewer,Security,Trash,Water

Miscellaneous

Public Survey Township: 1

**Public
Survey
Section:** 6

Syndication Remarks: Discover an exquisite residence boasting mesmerizing
vistas of both, the bay and the cityscape, ideally situated at One Miami East, in
Downtown Miami!

**Year Built
Details:**
Effective Year
Built

Virtual Tour URL:

<https://www.propertypanorama.com/instaview/mia/A11524924>

Courtesy of

Office Name: Beachfront Realty Inc

