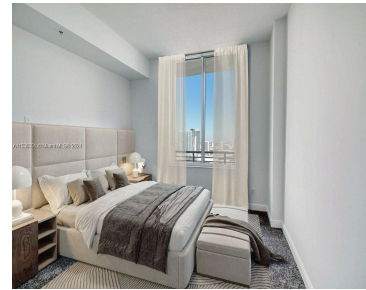
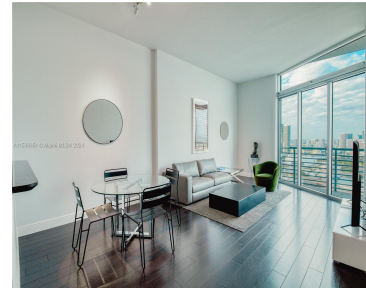


335 S BISCAYNE BLVD UPH-10 MIAMI FL 33131

<https://www.cays.com>



Live limitlessly in this sleek, stylish PENTHOUSE condo that offers 12'ft ceilings w/ endless views of Biscayne Bay, Port of Miami and Miami Beach. This highly sought after "10 line" offers an open concept that features 846SF of ample living, new lighting & tasteful renovations throughout. The kitchen has plenty of storage & breakfast-bar that [...]

- 1 bed
- 1 bath
- Condominium
- Residential
- Active
- 846 sq ft

Basics

Bathrooms Full: 1

Category: Residential

Status: Active

Bathrooms: 1 bath

Year built: 2005

Lot Size Units: Square Feet

Type: Condominium

Bedrooms: 1 bed

Area: 846 sq ft



Property details

Total Building Area: 846

Direction Faces: North

Subdivision Name: ONE MIAMI EAST CONDO

Parcel Number: 01-42-06-065-4110

Possession: Closing & Funding

Property Features

Exterior Features:

Balcony, Security/High Impact Doors

Interior Features: Bedroom on Main Level, Entrance

Foyer, Eat-in Kitchen, High Ceilings, Living/Dining Room, Other, Walk-In Closet(s)

Waterfront Features: Bay Front

Window Features: Blinds, Impact Glass

Pool Features: Association

Parking Features: Detached, Garage, One Space

Security Features: Door Man, Elevator Secured, Key Card Entry, Fire Sprinkler System

Appliances: Dryer, Dishwasher, Electric Range, Ice Maker, Microwave, Refrigerator, Washer

Architectural Style: High Rise, Penthouse

Association Amenities: Bike Storage, Business Center, Clubhouse, Elevator(s), Fitness Center, Barbecue, Picnic Area, Playground, Pool, Sauna, Spa/Hot Tub

Construction Materials: Brick, Block

Cooling: Electric

Cooling Y/N: 1

Covered Spaces: 1

Flooring: Carpet, Laminate

Furnished: Negotiable

Garage Spaces: 1

Garage Y/N: 1

Heating: Electric

Heating Y/N: 1

Pets Allowed: Conditional, Yes

View: Bay, City

View Y/N: 1

Entry Level: 44

Entry Location: 44

Patio and Porch Features: Balcony, Open

Property Attached Y/N: 1

Waterfront Y/N: 1

Stories Total: 44

Utilities: Cable Available

Rooms & Units Description



Unit Number: UPH-10

Location Details

County Or Parish: Miami-Dade County

Fees & Taxes

Tax Annual Amount: 8912 **Tax Year:** 2023

Tax Legal Description: ONE **Association Fee:** 787
MIAMI EAST CONDO UNIT
UPH-10 UNDIV 0.17% INT IN
COMMON ELEMENTS OFF REC
24030-4560 COC 25423-3962
01 2007 1

**Association Fee
Frequency:** Monthly

Association Fee Includes: Amenities,Cable TV,Hot
Water,Insurance,Internet,Sewer,Security,Trash,Water

Miscellaneous

Public Survey Township: 1

**Public Survey
Section:** 6

Syndication Remarks: Live limitlessly in this sleek, stylish PENTHOUSE condo that offers 12'ft ceilings w/ endless views of Biscayne Bay, Port of Miami and Miami Beach.

**Year Built
Details:** New
Construction

Virtual Tour URL:
<https://www.propertypanorama.com/instaview/mia/A11536351>

Courtesy of

Office Name: Serhant

