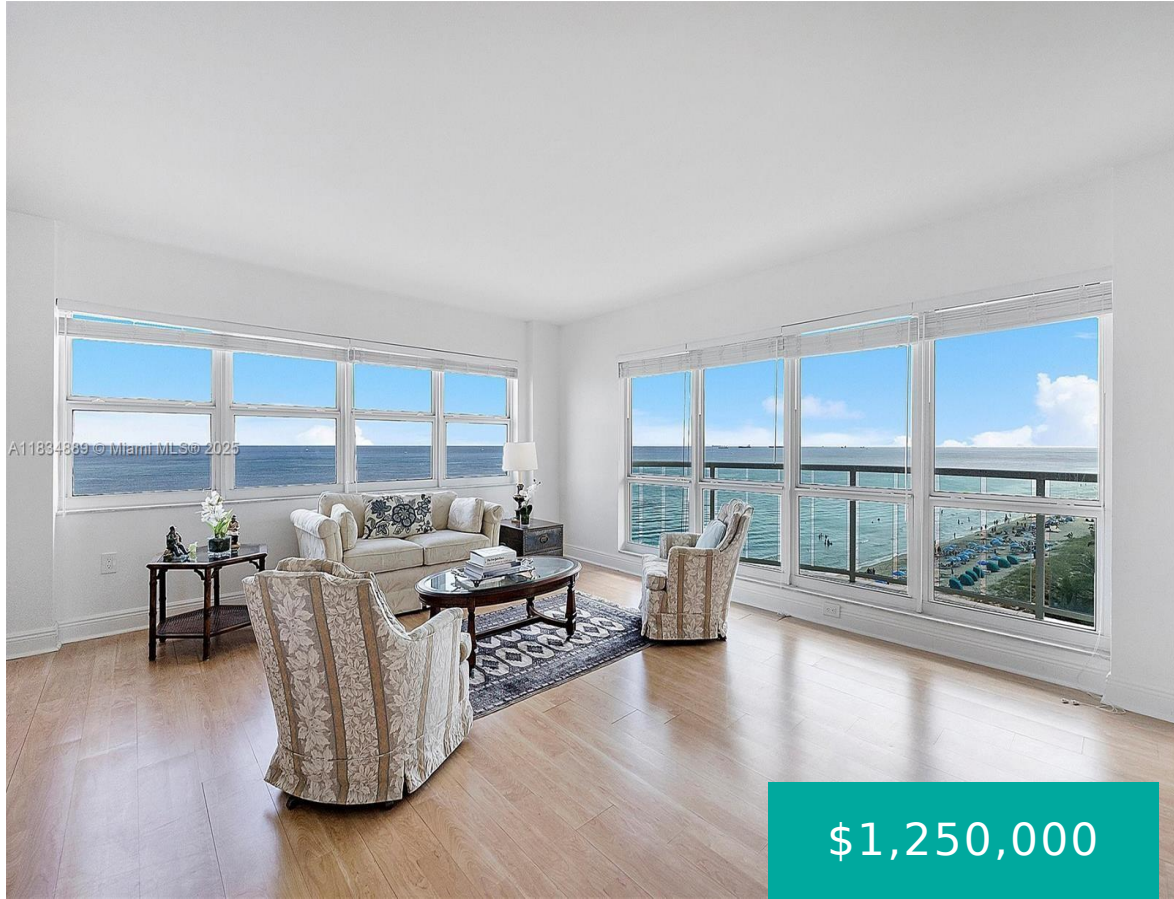


# 3400 GALT OCEAN DR FORT LAUDERDALE FL 33308 3400 GALT OCEAN DR 702S

<https://www.cays.com>



SOUTHPOINT CONDO UNIT 702S PER CDO BK/PG: 5922/587 SPECTACULAR DIRECT OCEANFRONT CONDO. THIS IS A RARELY AVAILABLE SOUTHEAST CORNER, 3BED/2.5 BATH WITH GREAT OCEAN VIEWS FROM EVERY ROOM. UNIT COMES WITH ALL LAMINATE FLOORS, REMODELED KTCHEN WITH QUARTZ COUNTER TOPS, STAINLESS STREEL APPLIANCES, ALL REDONE BATHROOMS WITH WALK-IN SHOWERS, WASHER/DRYER IN UNIT, EAT-IN KITCHEN, ALL [...]

- 3 beds
- 2, 3 baths
- Condominium, Residential
- Condominium, Residential
- Active
- 2112 sq ft

## Basics



**Bathrooms Half:** 1

**Type:** Condominium, Residential

**Bedrooms:** 3 beds

**Half baths:** 1 half bath

**Area:** 2112 sq ft

**View:** Ocean,Other

**County:** Broward

**Category:** Condominium, Residential

**Status:** Active

**Bathrooms:** 2, 3 baths

**Floors:** 22 floors

**Year built:** 1974

**Subdivision Name:** SOUTHPOINT CONDO

---

## Property details

**Subdivision Name:** SOUTHPOINT CONDO

**Parcel Number:** 33308

---

## Property Features

**Waterfront Features:** OceanFront

**Cooling:** Electric

**Garage Y/N:** 1

**Heating Y/N:** 1

**View:** Ocean,Other

**Waterfront Y/N:** 1

**Parking Features:** TwoOrMoreSpaces

**Cooling Y/N:** 1

**Heating:** Electric

**Pets Allowed:** Conditional,Yes

**View Y/N:** 1

**Stories Total:** 22

---

## Rooms & Units Description

**Unit Number:** 702S

---

## Location Details

**County Or Parish:** Broward



---

## Building Details

**Construction Materials:** Block

**Garage Spaces:** 2

**Covered Spaces:** 2

**Floor covering:** Laminate

---

## Amenities & Features

**Pool Features:** Association

**Security Features:** DoorMan,Other,SecurityGuard

**Waterfront Features:** OceanFront

**Cooling:** Electric

**Heating:** Electric

**Appliances:**

Dryer,Dishwasher,ElectricRange,Disposal,Microwave,Refrigerator,Washer

**Parking Features:** TwoOrMoreSpaces

**Association Amenities:**

FitnessCenter,Other,Pool,TennisCourts,Elevators

**Window Features:** Blinds

**Exterior Features:** Barbecue

**Interior Features:** Other

---

## Expenses, Fees & Taxes

**Association Fee:** \$1,651

**Tax Year:** 2024

**Tax Annual Amount:** \$19,177

---

## Fees & Taxes

**Association Fee:** 1651

---

## Miscellaneous

**Association Fee Frequency:** Monthly

**List Office Name:** Partnership Realty Inc.

**Listing Terms:** Cash,Conventional,Other



---

## Miscellaneous

**Above Grade**

**Virtual Tour URL:**

**Finished Area:**

<https://www.propertypanorama.com/instaview/mia/A11834889>

Fort Lauderdale, FL

---

## Courtesy of

**Office Name:** Partnership Realty Inc.

