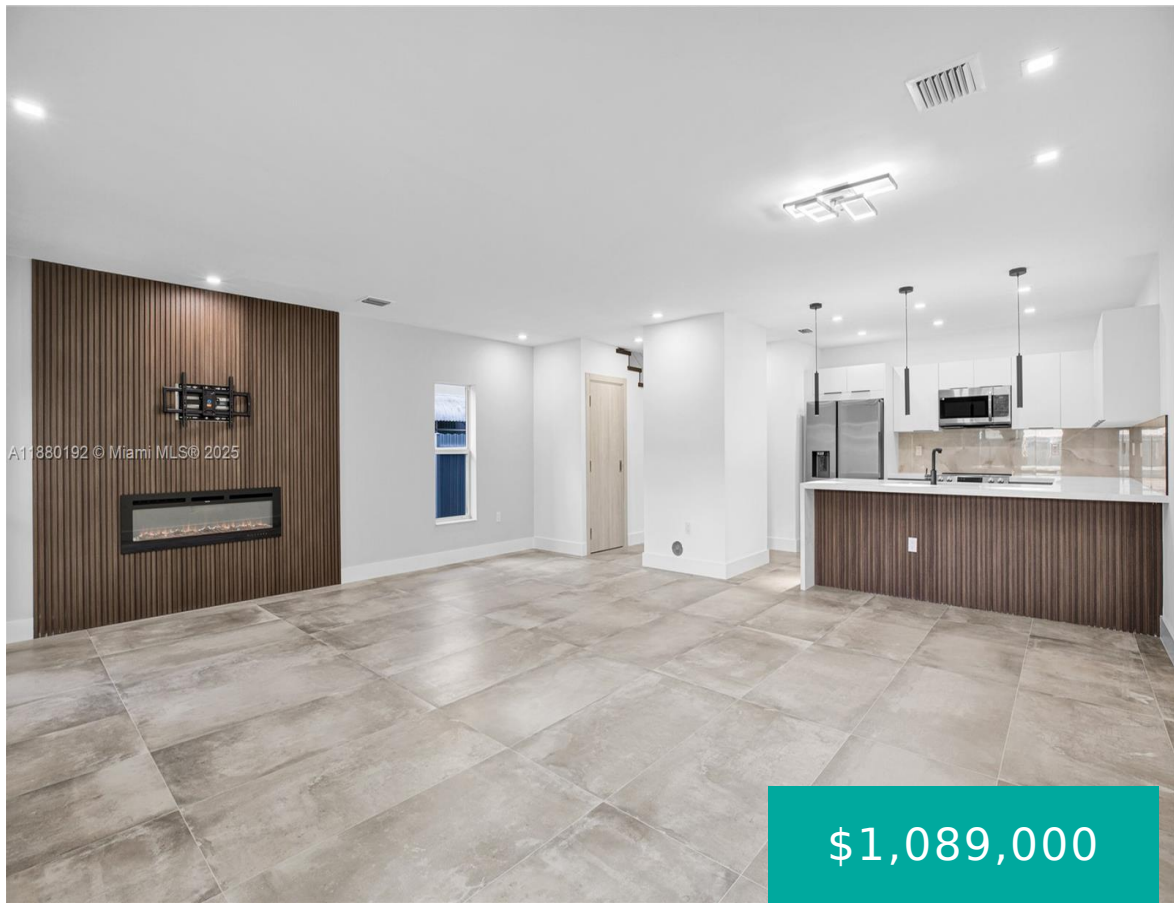


3431 16TH TER MIAMI FL 33145 3431 SW 16TH TER 3431

<https://www.cays.com>



GARLICK SUB PB 144-9 T-18461 LOT 4 BLK 1 LOT SIZE 5374 SQ FT F/A/U
01-4109-029-0220 OR 18968-3512 012000 1 COC 24575-4528 09 2005 4
Discover elevated living at 3431 SW 16th Terrace, Miami. This newly built townhome, moments from Coral Gables, merges sleek architecture with timeless sophistication. It offers 3 generous bedrooms, 2.5 refined [...]

- 3 beds
- 2, 3 baths
- Condominium, Residential
- Condominium, Residential
- Active
- 1852 sq ft

Basics



Bathrooms Half: 1

Type: Condominium, Residential

Bedrooms: 3 beds

Half baths: 1 half bath

Area: 1852 sq ft

View: Garden

County: Miami-Dade

Category: Condominium, Residential

Status: Active

Bathrooms: 2, 3 baths

Floors: 1 floor

Year built: 2024

Subdivision Name: GARLICK SUB

Property details

Subdivision Name: GARLICK SUB

Parcel Number: 33145

Property Features

Parking Features: TwoOrMoreSpaces

Cooling Y/N: 1

Heating: Central

Pets Allowed: Conditional,Yes

Stories Total: 1

Cooling: CentralAir

Garage Y/N: 1

Heating Y/N: 1

View: Garden

Rooms & Units Description

Unit Number: 3431

Location Details

County Or Parish: Miami-Dade

Middle/Junior School: Ponce De Leon

Elementary School: Sunset

High School: Coral Gables



Building Details

Construction Materials: Block

Garage Spaces: 1

Covered Spaces: 1

Floor covering: CeramicTile, Tile

Amenities & Features

Parking Features: TwoOrMoreSpaces

Patio & Porch Features: Deck,Patio

Utilities: CableAvailable

Exterior Features: Deck,Fence,SecurityHighImpactDoors,Patio

Heating: Central

Appliances:

Dryer,Dishwasher,ElectricRange,Disposal,Microwave,Refrigerator

Security Features: Other

Association Amenities: None

Cooling: CentralAir

Furnished: Unfurnished

Interior Features:

BedroomOnMainLevel,FirstFloorEntry

Nearby Schools

Middle Or Junior School: Ponce De Leon

High School: Coral Gables

Elementary School: Sunset

Expenses, Fees & Taxes

Association Fee: \$450

Tax Year: 2024

Tax Annual Amount: \$7,961

Fees & Taxes

Association Fee: 450



Miscellaneous

Association Fee Frequency: Monthly **List Office Name:** Compass Florida, LLC

Listing Terms: Cash,Conventional **Direction Faces:** South

Miscellaneous

Above Grade **Virtual Tour URL:**

Finished Area: <https://www.propertypanorama.com/instaview/mia/A11880192>

Miami, FL

Courtesy of

Office Name: Compass Florida, LLC

