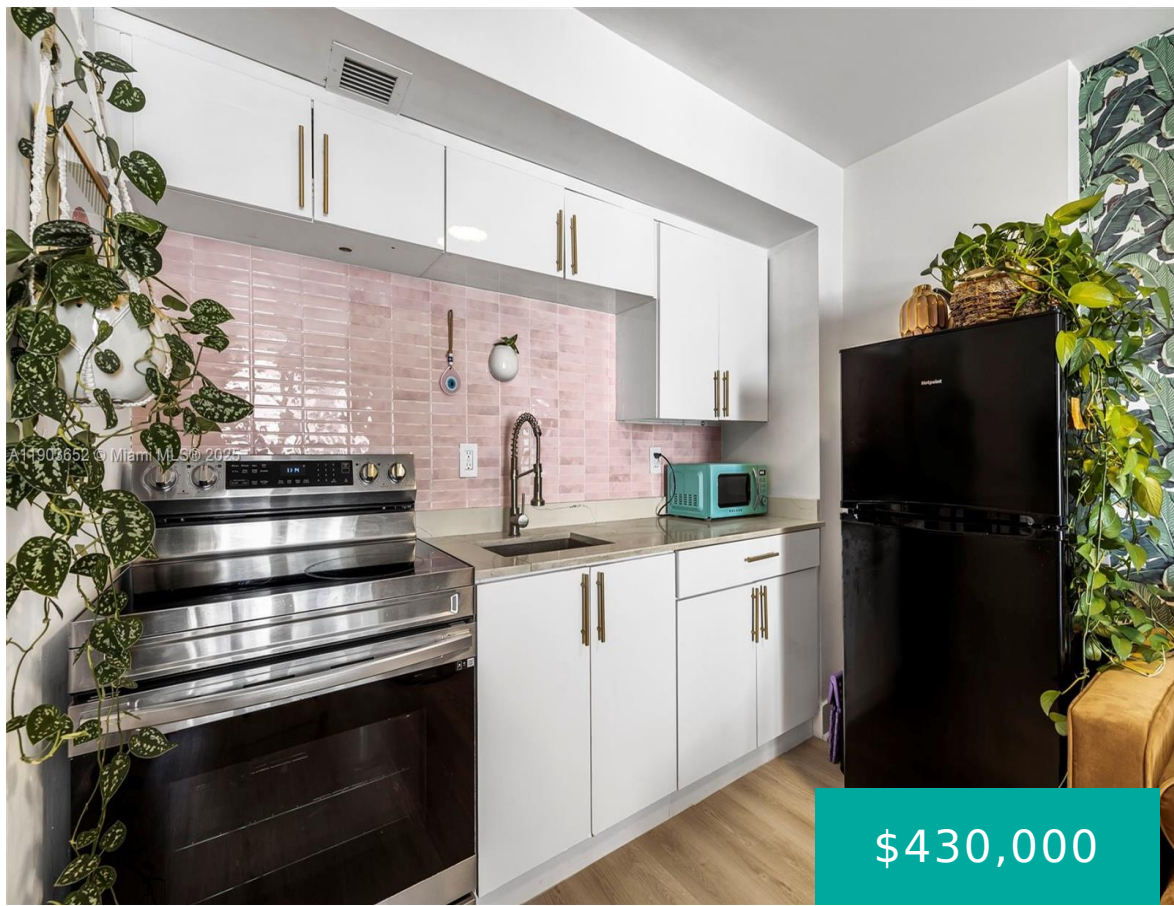


345 OCEAN DR MIAMI BEACH FL 33139 345 OCEAN DR 718

<https://www.cays.com>



OCEAN POINT CONDO UNIT 718 SEVENTH FLOOR UNDIV .00334% INT IN COMMON ELEMENTS CLERKS FILE 70R-16950 OR 17102-4409 0296 4 Your oceanfront oasis awaits in the coveted South of Fifth—Miami Beach’s most desirable enclave. This stunning studio is perfect as a home or private getaway, where mornings begin with ocean sounds and balcony views of [...]

- 0 beds
- 1, 1 bath
- Condominium, Residential
- Condominium, Residential
- Active
- 407 sq ft

Basics



Category: Condominium, Residential
Status: Active
Bathrooms: 1, 1 bath
Floors: 11 floors
Year built: 1970
Subdivision Name: OCEAN POINT CONDO

Type: Condominium, Residential
Bedrooms: 0 beds
Half baths: 0 half baths
Area: 407 sq ft
View: Ocean,Water
County: Miami-Dade

Property details

Subdivision Name: OCEAN POINT CONDO

Parcel Number: 33139

Property Features

Waterfront Features: OceanAccess,OceanFront
Cooling: CentralAir
Heating: Central
Pets Allowed: Conditional,No,PetRestrictions
View Y/N: 1
Stories Total: 11

Parking Features: Other,OnStreet
Cooling Y/N: 1
Heating Y/N: 1
View: Ocean,Water
Waterfront Y/N: 1

Rooms & Units Description

Unit Number: 718

Location Details

County Or Parish: Miami-Dade
Middle/Junior School: Nautilus

Elementary School: South Pointe
High School: Miami Beach



Building Details

Architectural Style: HighRise

Construction Materials: Block

Floor covering: Laminate, Other

Amenities & Features

Pool Features: Heated

Parking Features:
Other, OnStreet

Security Features: DoorMan, KeyCardEntry, SecurityGuard

Patio & Porch Features:
Balcony, Open

Association Amenities:

BikeStorage, Clubhouse, Elevators, Laundry, Other, Pool, Trash

Waterfront Features:
OceanAccess, OceanFront

Window Features: ImpactGlass

Cooling: CentralAir

Exterior Features: Balcony, SecurityHighImpactDoors

Heating: Central

Interior Features: ClosetCabinetry

Laundry Features:
CommonArea

Appliances: ElectricRange, Refrigerator

Nearby Schools

Middle Or Junior School: Nautilus

Elementary School: South Pointe

High School: Miami Beach

Expenses, Fees & Taxes

Association Fee: \$866

Tax Annual Amount: \$4,835

Tax Year: 2024

Fees & Taxes



Association Fee: 866

Miscellaneous

Association Fee Frequency: Monthly **List Office Name:** Compass Florida, LLC

Listing Terms: Cash,Conventional

Miscellaneous

Above Grade

Virtual Tour URL:

Finished Area: <https://www.propertypanorama.com/instaview/mia/A11903652>

Miami Beach, FL

Courtesy of

Office Name: Compass Florida, LLC

