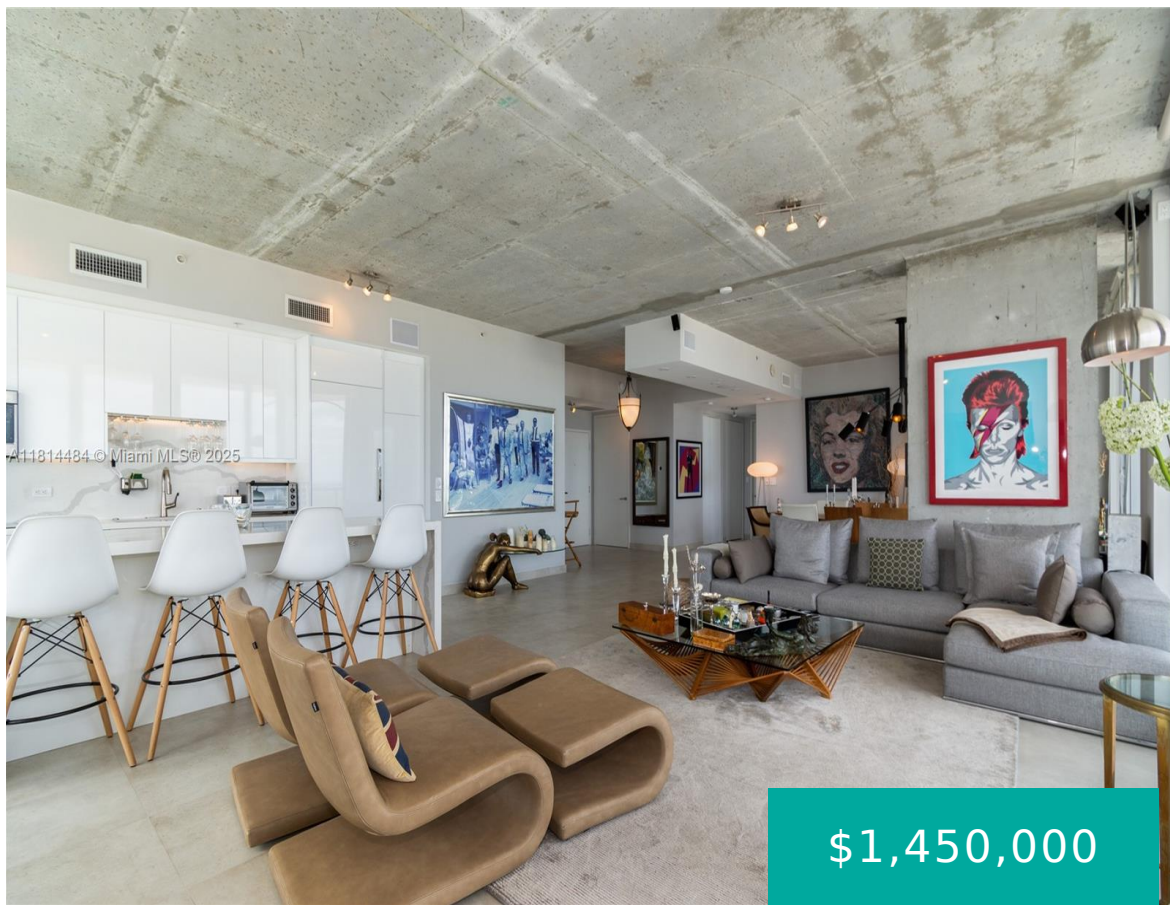


3470 COAST AVE MIAMI FL 33137 3470 E COAST AVE H2201

<https://www.cays.com>



TWO MIDTOWN MIAMI CONDO UNIT H2201 UNDIV 0.004124% INT IN COMMON ELEMENTS OFF REC 25413-2411 COC 26369-4238 04 2008 1 Rarely available 01 line at 2 Midtown! This stunning corner unit has been fully gut-renovated and features 2 beds, 2.5 baths (originally 3/2.5), in-wall Sonos speakers in every room and bathroom, electric window treatments, and [...]

- 3 beds
- 2, 3 baths
- Condominium, Residential
- Condominium, Residential
- Active
- 1577 sq ft

Basics



Bathrooms Half: 1

Type: Condominium, Residential

Bedrooms: 3 beds

Half baths: 1 half bath

Area: 1577 sq ft

View: Bay,City,Intercoastal,Ocean,Water

County: Miami-Dade

Category: Condominium, Residential

Status: Active

Bathrooms: 2, 3 baths

Floors: 26 floors

Year built: 2007

Subdivision Name: TWO MIDTOWN MIAMI CONDO

Property details

Subdivision Name: TWO MIDTOWN MIAMI CONDO

Parcel Number: 33137

Property Features

Waterfront Features: Other

Cooling: CentralAir,CeilingFans

Garage Y/N: 1

Heating Y/N: 1

View: Bay,City,Intercoastal,Ocean,Water

Waterfront Y/N: 1

Parking Features: TwoOrMoreSpaces

Cooling Y/N: 1

Heating: Central

Pets Allowed: Conditional,Yes

View Y/N: 1

Stories Total: 26

Rooms & Units Description

Unit Number: H2201

Location Details

County Or Parish: Miami-Dade



Building Details

Construction Materials: Block

Garage Spaces: 2

Covered Spaces: 2

Floor covering: Tile

Amenities & Features

Pool Features: Association

Security Features: Other,FireSprinklerSystem,SmokeDetectors

Association Amenities: FitnessCenter,Pool,SpaHotTub,Trash,Elevators

Utilities: CableAvailable

Exterior Features: Balcony,SecurityHighImpactDoors

Heating: Central

Appliances:

BuiltInOven,Dryer,Dishwasher,ElectricRange,Disposal,IceMaker,Microwave,Refrigerator

Parking Features: TwoOrMoreSpaces

Patio & Porch Features: Balcony,Open

Waterfront Features: Other

Cooling: CentralAir,CeilingFans

Furnished: Negotiable

Interior Features:

BuiltInFeatures,DualSinks,Elevator,MainLevelPrimary

Expenses, Fees & Taxes

Association Fee: \$2,200

Tax Year: 2024

Tax Annual Amount: \$10,046

Fees & Taxes

Association Fee: 2200

Miscellaneous

Association Fee Frequency: Monthly **List Office Name:** Douglas Elliman

Listing Terms: Cash,Conventional

Miscellaneous



Above Grade **Virtual Tour URL:**
Finished Area: <https://www.propertypanorama.com/instaview/mia/A11814484>
Miami, FL

Courtesy of

Office Name: Douglas Elliman

