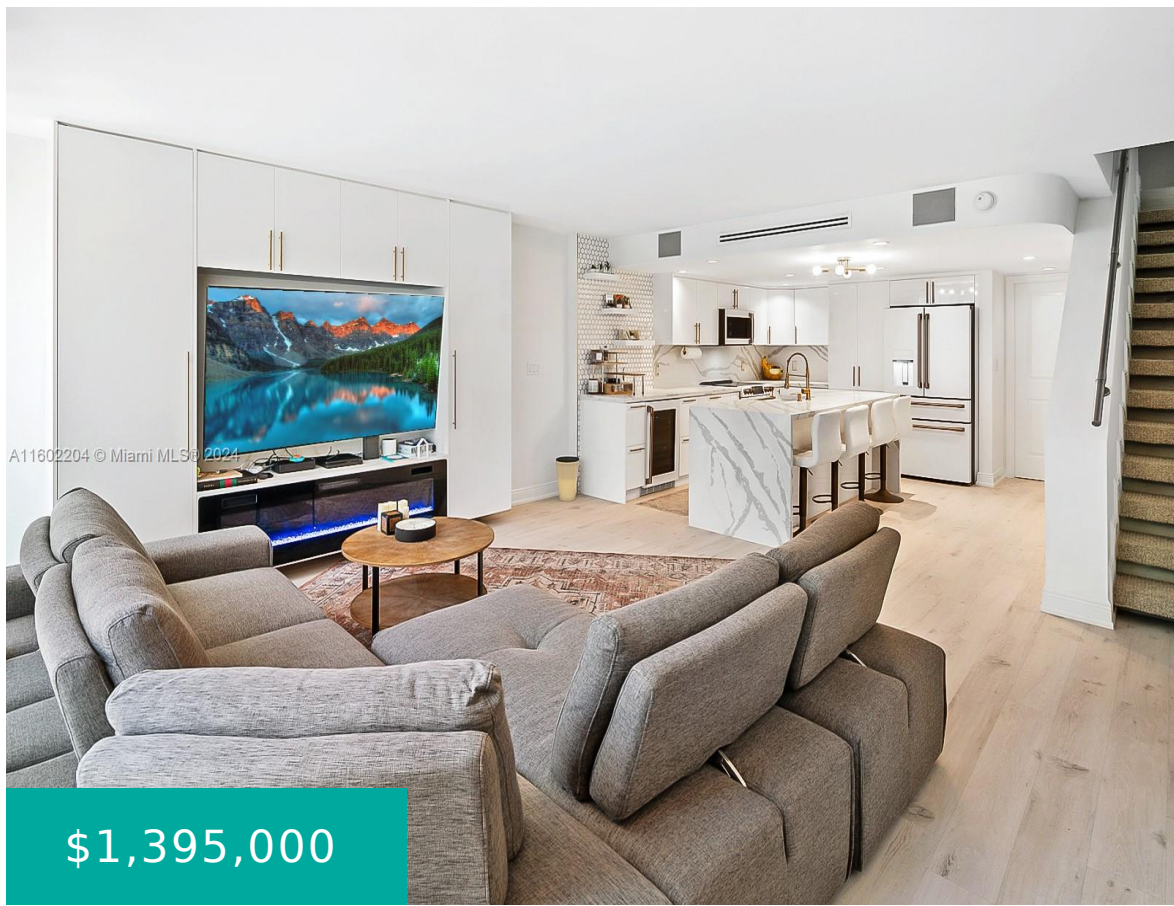


# 350 GRAPETREE DR KEY BISCAYNE FL 33149 350 GRAPETREE DR 408

<https://www.cays.com>



**\$1,395,000**



GRAPETREE TOWNHOUSE CONDO OF KEY BISCAYNE UNIT 408 UNDIV 1/71% INT IN COMMON ELEMENTS CLERKS FILE 75R 232798 OR 19874-2430 1000 4  
This beautifully renovated townhome showcases a modern open kitchen, complete with sleek Cafe appliances and an elegant quartz waterfall island. Two spacious bedrooms plus den and three full bathrooms. Just steps to the [...]

- 2 beds
- 3, 3 baths
- Residential, Townhouse
- Residential, Townhouse
- Active
- 1404 sq ft

## Basics



**Category:** Residential, Townhouse **Type:** Residential, Townhouse

**Status:** Active

**Bedrooms:** 2 beds

**Bathrooms:** 3, 3 baths

**Floors:** 2 floors

**Area:** 1404 sq ft

**Year built:** 1974

**View:** Garden

**Subdivision Name:** GRAPETREE TOWNHOUSE CONDO

**County:** Miami-Dade

---

## Property details

**Subdivision Name:** GRAPETREE TOWNHOUSE CONDO

**Parcel Number:** 33149

---

## Property Features

**Parking Features:** Guest,OneSpace,OnStreet

**Carport Y/N:** 1

**Cooling:** CentralAir,Electric

**Cooling Y/N:** 1

**Heating:** Central,Electric

**Heating Y/N:** 1

**Pets Allowed:** Conditional,Yes

**View:** Garden

**Stories Total:** 2

---

## Rooms & Units Description

**Unit Number:** 408

---

## Location Details

**County Or Parish:** Miami-Dade

**Elementary School:** Keybiscayne

**High School:** Mast Academy



---

## Building Details

**Construction Materials:** Block

**Covered Spaces:** 1

**Floor covering:** Vinyl

---

## Amenities & Features

**Pool Features:** Association

**Security Features:** SmokeDetectors

**Association Amenities:** Barbecue,PicnicArea,Playground,Pool

**Window Features:** ImpactGlass

**Exterior Features:** Balcony,EnclosedPorch,SecurityHighImpactDoors

**Interior Features:**

BuiltInFeatures,LivingDiningRoom,SplitBedrooms,UpperLevelPrimary,WalkInClosets

**Parking Features:** Guest,OneSpace,OnStreet

**Patio & Porch Features:** Balcony,Open,Porch,Screened

**Utilities:** CableAvailable

**Cooling:** CentralAir,Electric

**Heating:** Central,Electric

**Appliances:**

Dryer,Dishwasher,Microwave,Refrigerator,SelfCleaningOven

---

## Nearby Schools

**Elementary School:** Keybiscayne

**High School:** Mast Academy

---

## Expenses, Fees & Taxes

**Association Fee:** \$1,039

**Tax Annual Amount:** \$12,060

**Tax Year:** 2023

---

## Fees & Taxes

**Association Fee:** 1039

---

## Miscellaneous



**Association Fee Frequency:** Monthly **List Office Name:** Coldwell Banker Realty

**Listing Terms:** Cash,Conventional **Direction Faces:** North

---

## Miscellaneous

**Above Grade Finished Area:** Key Biscayne, FL  
**Virtual Tour URL:** <https://url.usb.m.mimecastprotect.com/s/lg2eCqAWXBSP5AGRtZBq0D?domain=tourfactory.com>

---

## Courtesy of

**Office Name:** Coldwell Banker Realty

