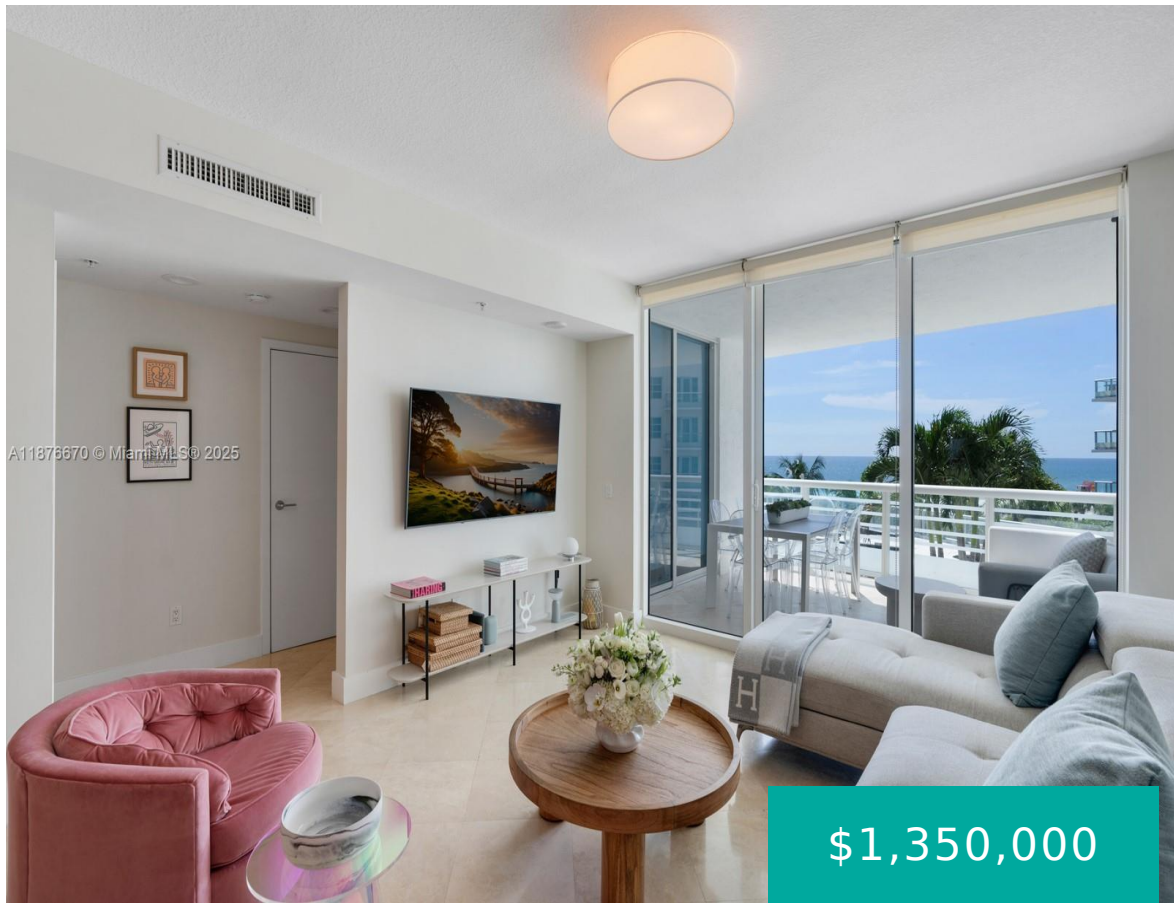


3801 COLLINS AVE MIAMI BEACH FL 33140 3801 COLLINS AVE 503

<https://www.cays.com>



MOSAIC ON MIAMI BEACH CONDO UNIT 503 UNDIV 0.8451% INT IN COMMON ELEMENTS OFF REC 25210-3819 COC 25295-3311 12 2006 1 Experience refined oceanfront living at Mosaic Miami Beach. Ideally situated in the prestigious Faena District, Mosaic offers a convenient, walkable lifestyle. This two bedroom, two bathroom residence opens from a private elevator entry. The [...]

- 2 beds
- 2, 2 baths
- Condominium, Residential
- Condominium, Residential
- Active
- 1280 sq ft

Basics



Category: Condominium, Residential

Status: Active

Bathrooms: 2, 2 baths

Floors: 21 floors

Year built: 2006

Subdivision Name: MOSAIC ON MIAMI BEACH CON

Type: Condominium, Residential

Bedrooms: 2 beds

Half baths: 0 half baths

Area: 1280 sq ft

View: Ocean

County: Miami-Dade

Property details

Subdivision Name: MOSAIC ON MIAMI BEACH CON

Parcel Number: 33140

Property Features

Waterfront Features:
OceanAccess,OceanFront

Cooling: CentralAir

Garage Y/N: 1

Heating Y/N: 1

View: Ocean

Waterfront Y/N: 1

Parking Features: Assigned,OneSpace,Valet

Cooling Y/N: 1

Heating: Central

Pets Allowed: Conditional,Yes

View Y/N: 1

Stories Total: 21

Rooms & Units Description

Unit Number: 503

Location Details

County Or Parish: Miami-Dade

Middle/Junior School: Nautilus

Elementary School: North Beach

High School: Miami Beach



Building Details

Architectural Style: HighRise

Covered Spaces: 1

Floor covering: Marble

Construction Materials: Block

Garage Spaces: 1

Amenities & Features

Pool Features: Association

Security Features:

DoorMan,ElevatorSecured,SecuredGarageParking,LobbySecured,SecurityGuard,SmokeDetectors

Association Amenities: Clubhouse,Elevators,FitnessCenter,Pool,Sauna,Trash

Cooling: CentralAir

Heating: Central

Appliances: Dryer,Dishwasher,Microwave,Washer

Parking Features:

Assigned,OneSpace,Valet

Patio & Porch Features: Balcony,Open

Waterfront Features:

OceanAccess,OceanFront

Exterior Features:

Balcony,SecurityHighImpactDoors

Interior Features:

EntranceFoyer,KitchenIsland,Pantry,Elevator

Nearby Schools

Middle Or Junior School: Nautilus

High School: Miami Beach

Elementary School: North Beach

Expenses, Fees & Taxes

Association Fee: \$2,354

Tax Year: 2024

Tax Annual Amount: \$20,935

Fees & Taxes

Association Fee: 2354



Miscellaneous

Association Fee Frequency: Monthly **List Office Name:** Douglas Elliman

Listing Terms: Cash,Conventional

Miscellaneous

Above Grade **Virtual Tour URL:**
Finished Area: <https://www.propertypanorama.com/instaview/mia/A11876670>
Miami Beach, FL

Courtesy of

Office Name: Douglas Elliman

