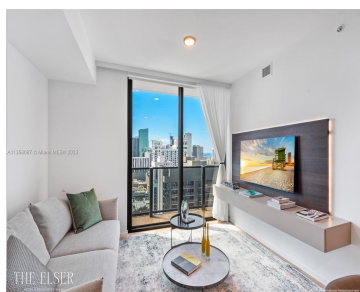
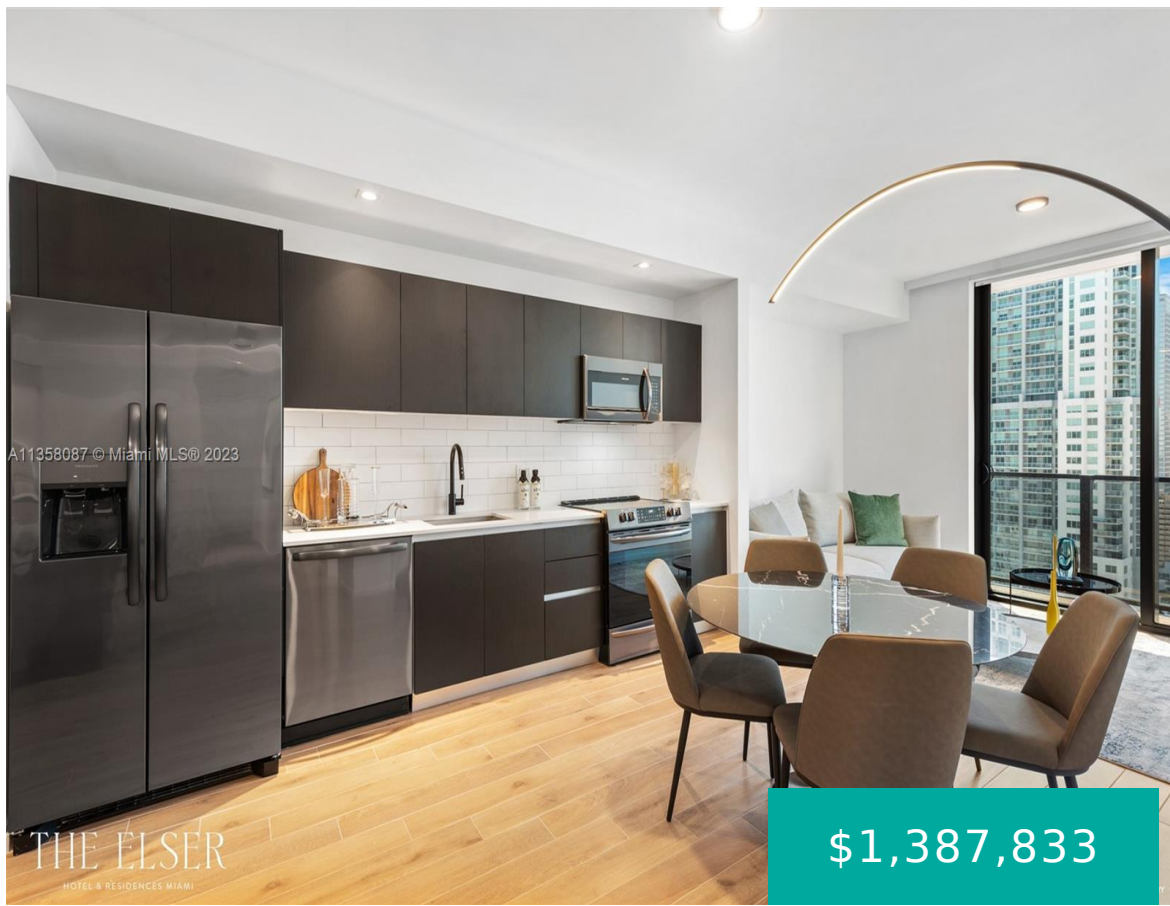


398 NE 5 2517 MIAMI FL 33132

https://www.cays.com



\$1,387,833

Spacious 2 Bedrooms + Den / 3 Baths. Discover a collection of cultivated residences each created for exceptional vibrant living, mindful and sophisticated designs pair perfectly with floor-to-ceiling views of Biscayne Bay and Downtown Miami. Miami is Designed for modern living. The Elser Hotel & Residences Miami offers a choice for every need. Discover a [...]

- 2 beds
- 3 baths
- Condominium
- Residential
- Active
- 1149 sq ft

### Basics

**Bathrooms Full:** 3  
**Category:** Residential  
**Status:** Active  
**Bathrooms:** 3 baths  
**Year built:** 2022

**Lot Size Units:** Square Feet  
**Type:** Condominium  
**Bedrooms:** 2 beds  
**Area:** 1149 sq ft



---

## Property details

**Direction Faces:** South

**Parcel Number:** 01-41-37-078-5560

**Living Area Source:** Builder

**Subdivision Name:** The Elser

**Possession:** Close Of Escrow

---

## Property Features

**Exterior Features:** Balcony,Security/High Impact Doors

**Waterfront Features:** Bay Front

**Parking Features:** Covered,Electric Vehicle Charging Station(s),One Space,Valet

**Appliances:** Dryer,Dishwasher,Refrigerator,Washer

**Association Amenities:** Fitness Center,Barbecue,Picnic Area,Pool

**Cooling:** Central Air

**Covered Spaces:** 1

**Furnished:** Furnished

**Garage Y/N:** 1

**Heating Y/N:** 1

**Pets Allowed:** Conditional,Yes

**View Y/N:** 1

**Entry Location:** 25

**Property Attached Y/N:** 1

**Stories Total:** 49

**Interior Features:** Bedroom on Main Level,Walk-In Closet(s)

**Pool Features:** Association,Heated

**Security Features:** Elevator Secured,Fire Alarm,Key Card Entry

**Architectural Style:** High Rise

**Construction Materials:** Block

**Cooling Y/N:** 1

**Flooring:** Tile

**Garage Spaces:** 1

**Heating:** Central

**New Construction Y/N:** 1

**View:** Bay

**Entry Level:** 25

**Patio and Porch Features:** Balcony,Open

**Waterfront Y/N:** 1

---

## Rooms & Units Description

**Unit Number:** 2517



---

## Location Details

**County Or Parish:**  
Miami-Dade County

**Directions:** Sales Gallery is open and ready to welcome you and your clients. Located at 400 Biscayne Blvd, Miami FL 33132. Complimentary Valet Parking. Monday-Friday from 10 am to 6 pm. Saturdays from 11 am to 4 pm by appointment only.

---

## Fees & Taxes

**Tax Year:** 2022

**Tax Legal Description:** ∂MIAMI NORTH PB B-41 LOTS 1 THRU 4 LESS N10FT ALL OF LOTS 18 & 19 BLK 80 & LESS EXT AREA OF CURVE IN NE COR FOR R/W LOT SIZE 33117 SQ FT M/

**Association Fee:** 1149

**Association Fee Frequency:** Monthly

**Association Fee Includes:**  
Amenities,Cable TV,Water

---

## Miscellaneous

**Development Status:** New Construction

**Public Survey Township:** 1

**Public Survey Section:** 8

**Syndication Remarks:** Discover a collection of cultivated residences with floor-to-ceiling views of Biscayne Bay and Downtown Miami.

**Year Built Details:** New Construction

**Virtual Tour URL:**  
<https://www.propertypanorama.com/instaview/mia/A11358087>

---

## Courtesy of

**Office Name:** PMG Residential LLC

