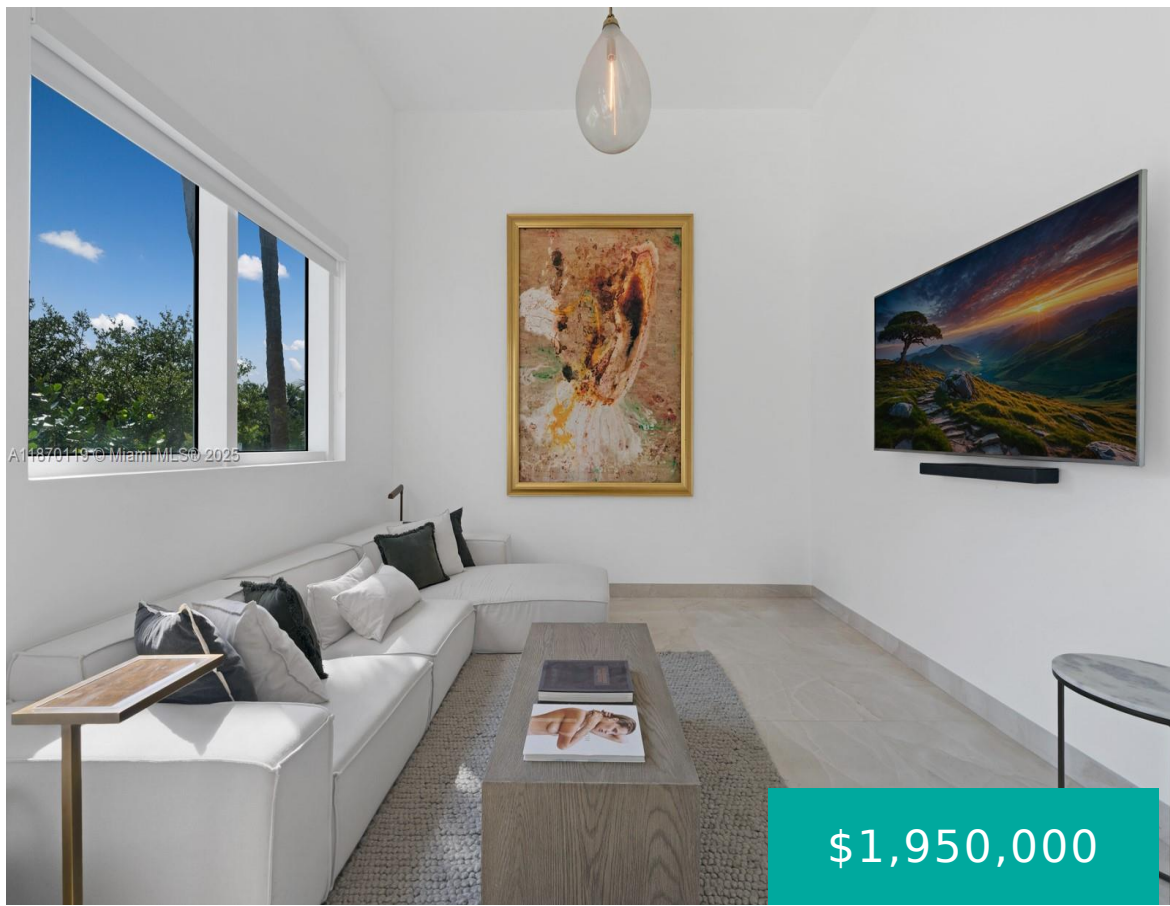


400 ALTON RD MIAMI BEACH FL 33139 400 ALTON RD TH-1A

<https://www.cays.com>



MURANO GRANDE AT PORTOFINO CONDO UNIT TH-1A UNDIV 0.3372% INT IN COMMON ELEMENTS OFF REC 21134-3930 COC 24351-3639 02 2006 5

Discover luxury living in this stunning 2 BD | 2 BA | 2 HB townhouse in the prestigious South of Fifth neighborhood. This turnkey gem features soaring 14 FT ceilings that flood the space [...]

- 2 beds
- 2, 4 baths
- Residential, Townhouse
- Residential, Townhouse
- Active
- 1864 sq ft



Basics



Bathrooms Half: 2

Category: Residential, Townhouse

Type: Residential, Townhouse **Status:** Active

Bedrooms: 2 beds

Bathrooms: 2, 4 baths

Half baths: 2 half baths

Floors: 40 floors

Area: 1864 sq ft

Year built: 2003

View: City,Other

Subdivision Name: MURANO GRANDE AT PORTOFIN

County: Miami-Dade

Property details

Subdivision Name: MURANO GRANDE AT PORTOFIN

Parcel Number: 33139

Property Features

Building Features: ExteriorLighting

Waterfront Features: Bayfront

Parking Features: Assigned,TwoOrMoreSpaces,Valet

Cooling: CentralAir

Cooling Y/N: 1

Garage Y/N: 1

Heating: Central

Heating Y/N: 1

Pets Allowed: Conditional,Yes

View: City,Other

Waterfront Y/N: 1

Stories Total: 40

Rooms & Units Description

Unit Number: TH-1A

Location Details

County Or Parish: Miami-Dade

Elementary School: South Pointe

Middle/Junior School: Nautilus

High School: Miami Beach



Building Details

Architectural Style: Other

Covered Spaces: 1

Floor covering: Other

Construction Materials: Block

Garage Spaces: 1

Amenities & Features

Pool Features: Heated

Security Features: DoorMan,SecuredGarageParking,SecurityGuard,FireSprinklerSystem

Association Amenities:

BusinessCenter,Clubhouse,FitnessCenter,Pool,Sauna,SpaHotTub,Elevators

Utilities: CableAvailable

Cooling: CentralAir

Heating: Central

Appliances:

BuiltInOven,Dryer,Dishwasher,ElectricRange,Microwave,Refrigerator,SelfCleaningOven,Washer

Parking Features: Assigned,TwoOrMoreSpaces,Valet

Patio & Porch Features: Open,Porch

Waterfront Features: Bayfront

Window Features: Blinds

Exterior Features: Porch

Interior Features:

Bidet,BuiltInFeatures,DiningArea,SeparateFormalDiningRoom,SeparateShower,UpperLevelPrimary,WalkInClosets

Features: ExteriorLighting

Nearby Schools

Middle Or Junior School: Nautilus

High School: Miami Beach

Elementary School: South Pointe

Expenses, Fees & Taxes

Association Fee: \$2,630

Tax Year: 2024

Tax Annual Amount: \$19,306

Fees & Taxes

Association Fee: 2630

Miscellaneous



Association Fee Frequency: Monthly **List Office Name:** Douglas Elliman

Listing Terms: Cash,Conventional

Miscellaneous

Above Grade

Virtual Tour URL:

Finished Area: <https://www.propertypanorama.com/instaview/mia/A11870119>

Miami Beach, FL

Courtesy of

Office Name: Douglas Elliman

