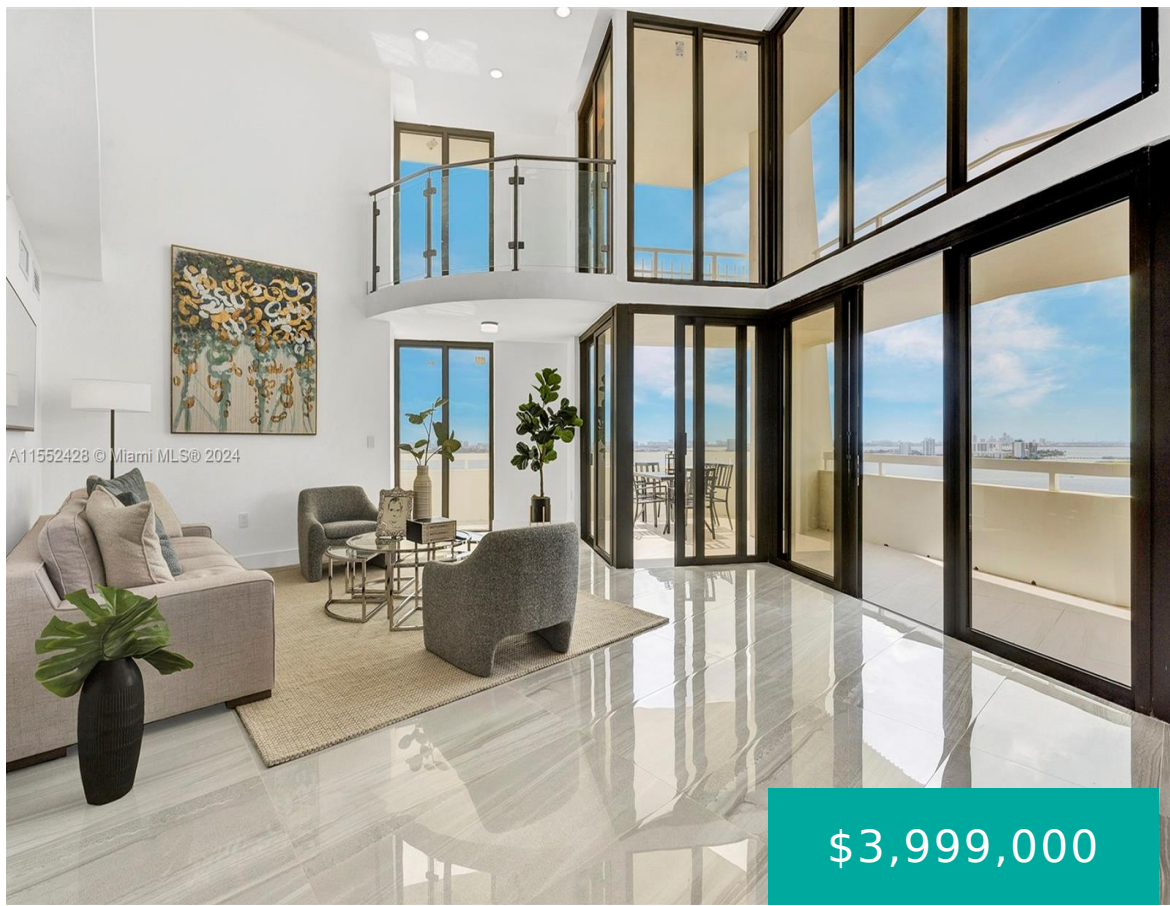


4000 TOWERSIDE TER MIAMI FL 33138 4000 TOWERSIDE TER PH2

<https://www.cays.com>



THE TOWERS OF QUAYSIDE CONDO #4 UNITS PH-2 & TS-2 UNDIV 0.4939 & 0.4939% INT IN COMMON ELEMENTS OFF REC 11323-1844 OR 17152-3287 0396 1 COC Rare opportunity to own a "Mansion in the Sky". Unique two-story (24th & 25th floors) luxury corner waterfront penthouse with breathtaking ocean & intracoastal views. Fabulous 55ft. entertainment space [...]

- 4 beds
- 4, 4 baths
- Condominium, Residential
- Condominium, Residential
- Active
- 3632 sq ft

Basics



Category: Condominium, Residential

Status: Active

Bathrooms: 4, 4 baths

Floors: 25 floors

Year built: 1982

View: Bay, Canal, Ocean

County: Miami-Dade

Type: Condominium, Residential

Bedrooms: 4 beds

Half baths: 0 half baths

Area: 3632 sq ft

Property Condition: Updated Remodeled

Subdivision Name: The Towers of Quayside

Property details

Subdivision Name: The Towers of Quayside

Parcel Number: 33138

Property Features

Waterfront Features:

Bayfront, Intracoastal Access

Cooling: Central Air

Garage Y/N: 1

Heating Y/N: 1

View: Bay, Canal, Ocean

Waterfront Y/N: 1

Parking Features:

Attached, Covered, Garage, Two Or More Spaces, Valet

Cooling Y/N: 1

Heating: Central

Pets Allowed: Conditional, Yes

View Y/N: 1

Stories Total: 25

Rooms & Units Description

Unit Number: PH2

Location Details

County Or Parish:

Miami-Dade

Directions: The Towers of Quayside is located East of Biscayne Blvd/US1. Take exit 96th Street off I95 to Biscayne Blvd. On the intracoastal next to Miami Shores.



Building Details

Architectural Style: Penthouse

Covered Spaces: 2

Floor covering: Tile

Construction Materials: Block

Garage Spaces: 2

Amenities & Features

Pool Features: Heated

Security Features: SecuritySystem,LobbySecured,SecurityGuard

Association Amenities: BasketballCourt,Marina,BikeStorage,Clubhouse,FitnessCenter,Playground,Pickleball,Pool,Sauna,SpaHotTub,Storage,TennisCourts,TransportationService

Utilities: CableAvailable

Exterior Features: Balcony,SecurityHighImpactDoors,TennisCourts

Heating: Central

Appliances: Dryer,Dishwasher,ElectricRange,Disposal,Microwave,Refrigerator,Washer

Parking Features: Attached,Covered,Garage,TwoOrMoreSpaces,Valet

Patio & Porch Features: Balcony,Open

Waterfront Features: Bayfront,IntracoastalAccess

Cooling: CentralAir

Furnished: Unfurnished

Interior Features: WetBar,BuiltInFeatures,BedroomOnMainLevel,SecondFloorEntry,FirstFloorEntry,HighCeilings,KitchenIsland,SittingAreaInPrimary,UpperLevelPrimary

Expenses, Fees & Taxes

Association Fee: \$6,736

Tax Year: 2023

Tax Annual Amount: \$15,453

Fees & Taxes

Association Fee: 6736

Miscellaneous

Association Fee Frequency: Monthly **List Office Name:** Douglas Elliman

Listing Terms: Cash,Conventional

Miscellaneous

Above Grade Finished Area: Miami, FL
Virtual Tour URL: https://www.dropbox.com/scl/fi/6i582lvwqf36ifkcn9jjb/040124_MICHEAL_VIDEO_TOUR.mp4?rlkey=lqf2otw9f0dhuzzqiup5aaiji&dl=0



Courtesy of

Office Name: Douglas Elliman

