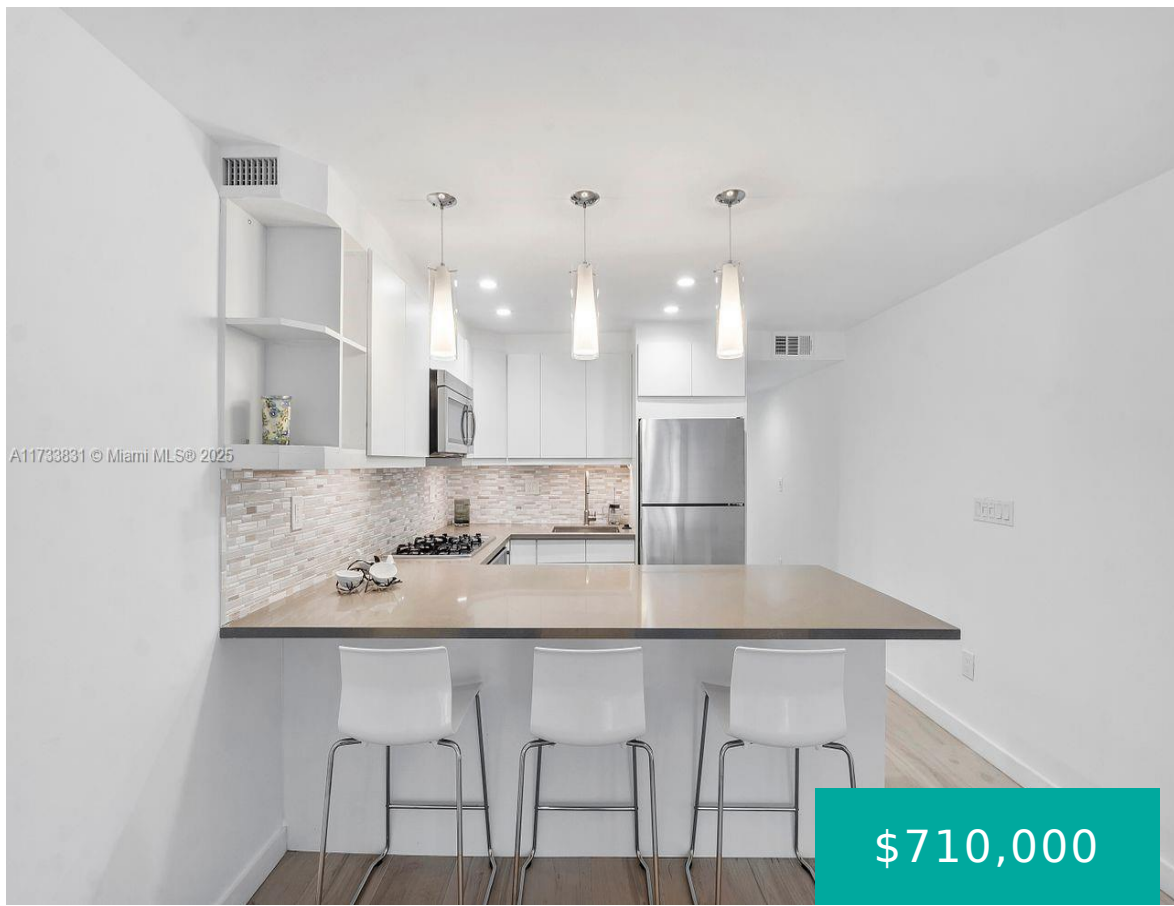


405 HIBISCUS DR MIAMI BEACH FL 33139 405 N HIBISCUS DR 202

<https://www.cays.com>



\$710,000



ISLAND CLUB OF SOUTH BEACH CONDO UNIT 202 UNDIV 4.3% INT IN COMMON ELEMENTS OFF REC 19894-2055 OR 20948-2170 1202 1 COC 24957-1836 08 2006 1 Don't miss this incredible opportunity to own on the Prestigious Hibiscus Island, discover this charming one-bedroom, one-bathroom unit the ONLY Condo Building on Hibiscus Island with Boat Dock/Boat Slip. [...]

- 1 bed
- 1, 1 bath
- Condominium, Residential
- Condominium, Residential
- Active
- 620 sq ft



Basics



Category: Condominium, Residential

Status: Active

Bathrooms: 1, 1 bath

Floors: 2 floors

Year built: 1960

Subdivision Name: ISLAND CLUB OF SOUTH BEAC

Type: Condominium, Residential

Bedrooms: 1 bed

Half baths: 0 half baths

Area: 620 sq ft

View: Other,Water

County: Miami-Dade

Property details

Subdivision Name: ISLAND CLUB OF SOUTH BEAC

Parcel Number: 33139

Property Features

Waterfront Features:

Bayfront,IntracoastalAccess,IntersectingCanal,OceanAccess

Cooling: CentralAir

Garage Y/N: 1

Pets Allowed: Conditional,Yes

View Y/N: 1

Stories Total: 2

Parking Features:

OneSpace

Cooling Y/N: 1

Heating: None

View: Other,Water

Waterfront Y/N: 1

Rooms & Units Description

Unit Number: 202

Location Details

County Or Parish: Miami-Dade

Middle/Junior School: Nautilus

Elementary School: South Pointe

High School: Miami Beach



Building Details

Architectural Style: None

Covered Spaces: 1

Floor covering: Hardwood, Wood

Construction Materials: Block

Garage Spaces: 1

Amenities & Features

Pool Features: Association,Heated

Security Features: SecurityGuard

Association Amenities:

BasketballCourt,BoatDock,Barbecue,Other,PicnicArea,Pool

Cooling: CentralAir

Heating: None

Laundry Features: WasherHookup,DryerHookup

Parking Features: OneSpace

Patio & Porch Features: Deck

Waterfront Features:

Bayfront,IntracoastalAccess,IntersectingCanal,OceanAccess

Exterior Features: Barbecue,Deck,TennisCourts

Interior Features: BedroomOnMainLevel,WalkInClosets

Appliances: Dishwasher

Nearby Schools

Middle Or Junior School: Nautilus

High School: Miami Beach

Elementary School: South Pointe

Expenses, Fees & Taxes

Association Fee: \$727

Tax Year: 2023

Tax Annual Amount: \$7,762

Fees & Taxes

Association Fee: 727



Miscellaneous

Association Fee Frequency: Monthly **List Office Name:** Coldwell Banker Realty

Listing Terms: Cash,Conventional

Miscellaneous

Above Grade **Virtual Tour URL:**
Finished Area: <https://www.propertypanorama.com/instaview/mia/A11733831>
Miami Beach, FL

Courtesy of

Office Name: Coldwell Banker Realty

