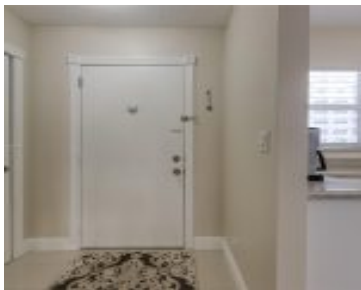


420 12TH AVE HALLANDALE BEACH FL 33009 420 NE 12TH AVE 208

<https://www.cays.com>



MEADOWBROOK CONDO APTS BLDG #4 UNIT 208 PER CDO BK/PG: 5052/19
Come view this turn key property which has been completely updated. Just bring you toothbrush and settle into this warm and inviting spacious corner unit which features an updated kitchen with granite counters. Two updated bathrooms with a Jacuzzi in the guest bathroom & [...]

- 2 beds
- 2, 2 baths
- Condominium, Residential
- Condominium, Residential
- Active
- 1092 sq ft

Basics



Category: Condominium, Residential

Status: Active

Bathrooms: 2, 2 baths

Total rooms: 1

Area: 1092 sq ft

Property Condition: UpdatedRemodeled

Subdivision Name: MEADOWBROOK CONDO APTS BL

Type: Condominium, Residential

Bedrooms: 2 beds

Half baths: 0 half baths

Floors: 1, 7 floor

Year built: 1972

View: Garden,Other

County: Broward

Property details

Subdivision Name: MEADOWBROOK CONDO APTS BL

Parcel Number: 33009

Property Features

Building Features: ExteriorLighting

Cooling: Electric

Heating: Electric

Pets Allowed: Conditional,Yes

Stories: 1

Parking Features: Guest,OneSpace

Cooling Y/N: 1

Heating Y/N: 1

View: Garden,Other

Stories Total: 7

Rooms & Units Description

Unit Number: 208

Total Rooms: 1

Location Details

County Or Parish: Broward

Directions: Hallandale Beach Blvd to 12th Avenue, north to property. Use GPS.

High School: Hallandale High



Building Details

Construction Materials: Block

Levels: One

Floor covering: Tile

Amenities & Features

Pool Features: Heated

Security Features: SmokeDetectors

Association Amenities: Clubhouse,Laundry,Barbecue,PicnicArea,Pool,Storage,Trash,Elevators

Window Features: Blinds,ImpactGlass

Electric: Fuses

Furnished: Partially

Interior Features:

BedroomOnMainLevel,FirstFloorEntry,JettedTub,LivingDiningRoom,MainLivingAreaEntryLevel,TubShower

Appliances:

Dishwasher,ElectricRange,ElectricWaterHeater,Disposal,Microwave,Refrigerator,SelfCleaningOven

Parking Features:

Guest,OneSpace

Patio & Porch Features:

Balcony,Screened

Utilities: CableAvailable

Cooling: Electric

Exterior Features:

Balcony,StormSecurityShutters

Heating: Electric

Laundry Features:

CommonArea

Features: ExteriorLighting

Nearby Schools

High School: Hallandale High

Expenses, Fees & Taxes

Tax Annual Amount: \$4,404

Tax Year: 2024

Miscellaneous

Association Fee Frequency: Annually

Listing Terms: Cash,Conventional

List Office Name: The Keyes Company

Direction Faces: South



Miscellaneous

Above Grade

Finished Area:
Hallandale Beach,
FL

Virtual Tour URL:

<https://www.propertypanorama.com/instaview/mia/A11902785>

Courtesy of

Office Name: The Keyes Company

