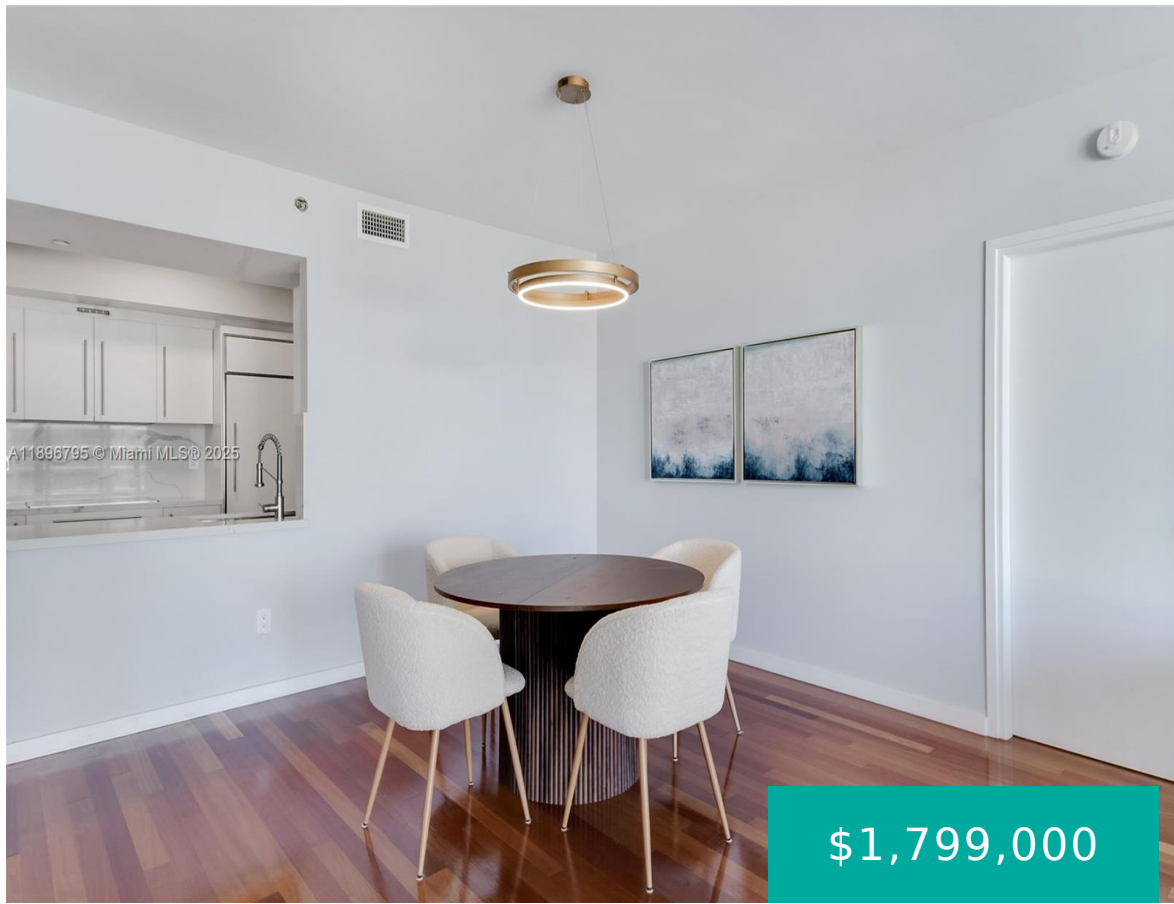


450 ALTON RD MIAMI BEACH FL 33139 450 ALTON RD 906

<https://www.cays.com>



ICON CONDO UNIT 906 UNDIV 0.29548 INT IN COMMON ELEMENTS OFF REC 22824-4551 COC 25948-0798 05 2007 4 Icon South Beach offers a unique opportunity for luxury living in Miami Beach. Whether a full-time residence or a seasonal retreat, Icon South Beach is the dream choice for luxurious bayside living. Nestled in the prestigious South [...]

- 2 beds
- 2, 2 baths
- Condominium, Residential
- Condominium, Residential
- Active
- 1452 sq ft

Basics



Category: Condominium, Residential

Status: Active

Bathrooms: 2, 2 baths

Total rooms: 2

Area: 1452 sq ft

View: Bay,City,Ocean

County: Miami-Dade

Type: Condominium, Residential

Bedrooms: 2 beds

Half baths: 0 half baths

Floors: 1, 42 floor

Year built: 2004

Subdivision Name: ICON CONDO

Property details

Subdivision Name: ICON CONDO

Parcel Number: 33139

Property Features

Waterfront Features: Bayfront

Cooling: CentralAir,Electric

Garage Y/N: 1

Heating Y/N: 1

View: Bay,City,Ocean

Waterfront Y/N: 1

Stories Total: 42

Parking Features: Attached,Garage,OneSpace

Cooling Y/N: 1

Heating: Electric

Pets Allowed: Conditional,Yes

View Y/N: 1

Stories: 1

Rooms & Units Description

Unit Number: 906

Total Rooms: 2

Location Details

County Or Parish: Miami-Dade

Middle/Junior School: Nautilus

Elementary School: South Pointe

High School: Miami Beach



Building Details

Architectural Style: HighRise

Covered Spaces: 1

Levels: One

Construction Materials: Block

Garage Spaces: 1

Floor covering: Hardwood, Tile, Wood

Amenities & Features

Pool Features: Association

Security Features:

DoorMan,ElevatorSecured,PhoneEntry,FireSprinklerSystem,SmokeDetectors

Accessibility Features: AccessibleElevatorInstalled,Other

Waterfront Features: Bayfront

Window Features: ImpactGlass

Exterior Features: Balcony,SecurityHighImpactDoors

Heating: Electric

Laundry Features: WasherHookup,DryerHookup

Parking Features: Attached,Garage,OneSpace

Patio & Porch Features: Balcony,Open

Association Amenities:

BikeStorage,BusinessCenter,Cabana,Clubhouse,FitnessCenter,Library,Barbecue,PicnicArea,Pool,Sauna,SpaHotTub,Storage,Trash

Utilities: CableAvailable

Cooling: CentralAir,Electric

Furnished: Negotiable

Interior Features:

BedroomOnMainLevel,BreakfastArea,DualSinks,FirstFloorEntry,LivingDiningRoom,MainLivingAreaEntryLevel,SeparateShower,WalkInClosets

Appliances: BuiltInOven,Dryer,Dishwasher,ElectricWaterHeater,Disposal,Microwave,Refrigerator,TrashCompactor,Washer

Nearby Schools

Middle Or Junior School: Nautilus

High School: Miami Beach

Elementary School: South Pointe

Expenses, Fees & Taxes

Association Fee: \$2,437

Tax Year: 2024

Tax Annual Amount: \$17,447

Fees & Taxes

Association Fee: 2437

Miscellaneous



Association Fee Frequency: Monthly **List Office Name:** One Sotheby's International Re

Listing Terms: Cash,Conventional **Direction Faces:** South

Miscellaneous

Above Grade

Virtual Tour URL:

Finished Area:

<https://my.matterport.com/show/?m=zqNMn37uYEQ&mls=1>

Miami Beach, FL

Courtesy of

Office Name: One Sotheby's International Re

