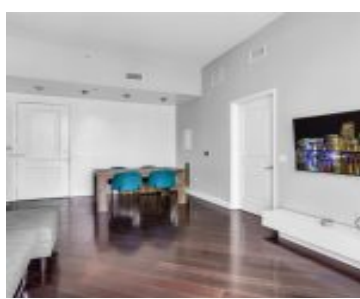
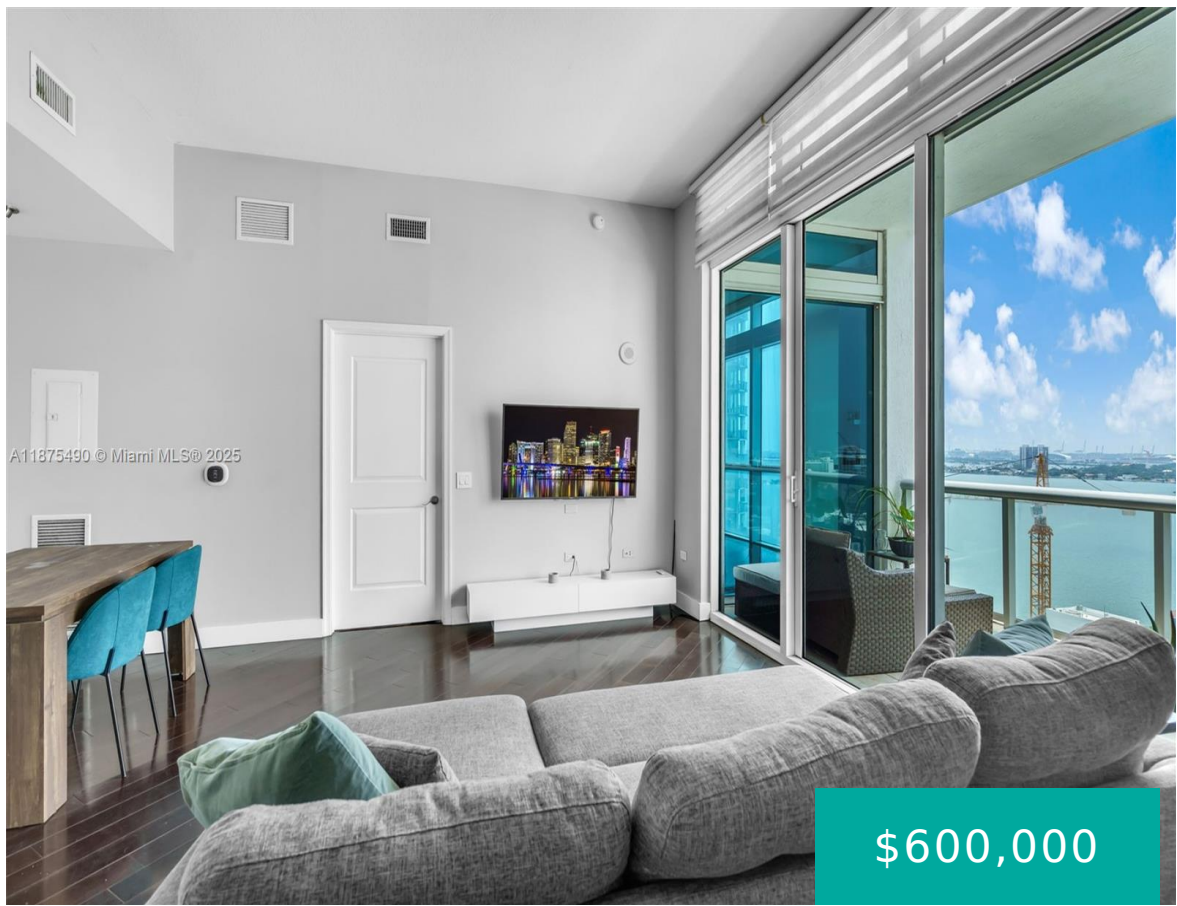


480 30TH ST MIAMI FL 33137 480 NE 30TH ST PH2205

<https://www.cays.com>



PLATINUM CONDO UNIT 22 05 UNDIV 0.80% INT IN COMMON ELEMENTS OFF REC 25225-1878 COC 25731-4425 06 2007 1 Step into this light-filled PENTHOUSE residence in Edgewater, 11 ft floor to ceiling impact glass windows frame breathtaking views. The 2 bedrooms offer rich wood floors, stainless steel appliances in an open kitchen, with automated window shades in the living [...]

- 2 beds
- 2, 2 baths
- Condominium, Residential
- Condominium, Residential
- Active
- 1007 sq ft

Basics



Category: Condominium, Residential
Status: Active
Bathrooms: 2, 2 baths
Floors: 22 floors
Year built: 2006
Subdivision Name: PLATINUM CONDO

Type: Condominium, Residential
Bedrooms: 2 beds
Half baths: 0 half baths
Area: 1007 sq ft
View: Bay, City
County: Miami-Dade

Property details

Subdivision Name: PLATINUM CONDO

Parcel Number: 33137

Property Features

Waterfront Features: Bayfront

Parking Features: Assigned, Attached, Garage, OneSpace

Cooling: Central Air, Electric

Cooling Y/N: 1

Garage Y/N: 1

Heating: Central, Electric

Heating Y/N: 1

Pets Allowed: Conditional, Yes

View: Bay, City

View Y/N: 1

Waterfront Y/N: 1

Stories Total: 22

Rooms & Units Description

Unit Number: PH2205

Location Details

County Or Parish: Miami-Dade

Elementary School: Hartner; Eneida

Middle/Junior School: de Diego; Jose

High School: Washington; Brooker T



Building Details

Architectural Style: HighRise,Penthouse

Covered Spaces: 1

Floor covering: Hardwood, Tile, Wood

Construction Materials: Block

Garage Spaces: 1

Amenities & Features

Pool Features: Association

Security Features:

ClosedCircuitCameras,DoorMan,LobbySecured,SmokeDetectors

Association Amenities: BusinessCenter,FitnessCenter,Pool,Elevators

Window Features: Sliding,ImpactGlass

Exterior Features: Balcony

Interior Features:

BedroomOnMainLevel,ClosetCabinetry,LivingDiningRoom,TubShower,WalkInClosets

Parking Features: Assigned,Attached,Garage,OneSpace

Patio & Porch Features: Balcony,Open

Waterfront Features: Bayfront

Cooling: CentralAir,Electric

Heating: Central,Electric

Appliances:

Dryer,Dishwasher,ElectricRange,Microwave,Refrigerator,Washer

Nearby Schools

Middle Or Junior School: de Diego; Jose **Elementary School:** Hartner; Eneida

High School: Washington; Brooker T

Expenses, Fees & Taxes

Association Fee: \$1,053

Tax Year: 2024

Tax Annual Amount: \$8,352

Fees & Taxes

Association Fee: 1053

Miscellaneous



Association Fee Frequency: Monthly

Listing Terms: Cash,Conventional

List Office Name: Compass Florida, LLC

Attribution Contact: 305-661-4003

Miscellaneous

Above Grade **Virtual Tour URL:**

Finished Area: <https://www.propertypanorama.com/instaview/mia/A11875490>
Miami, FL

Courtesy of

Office Name: Compass Florida, LLC

