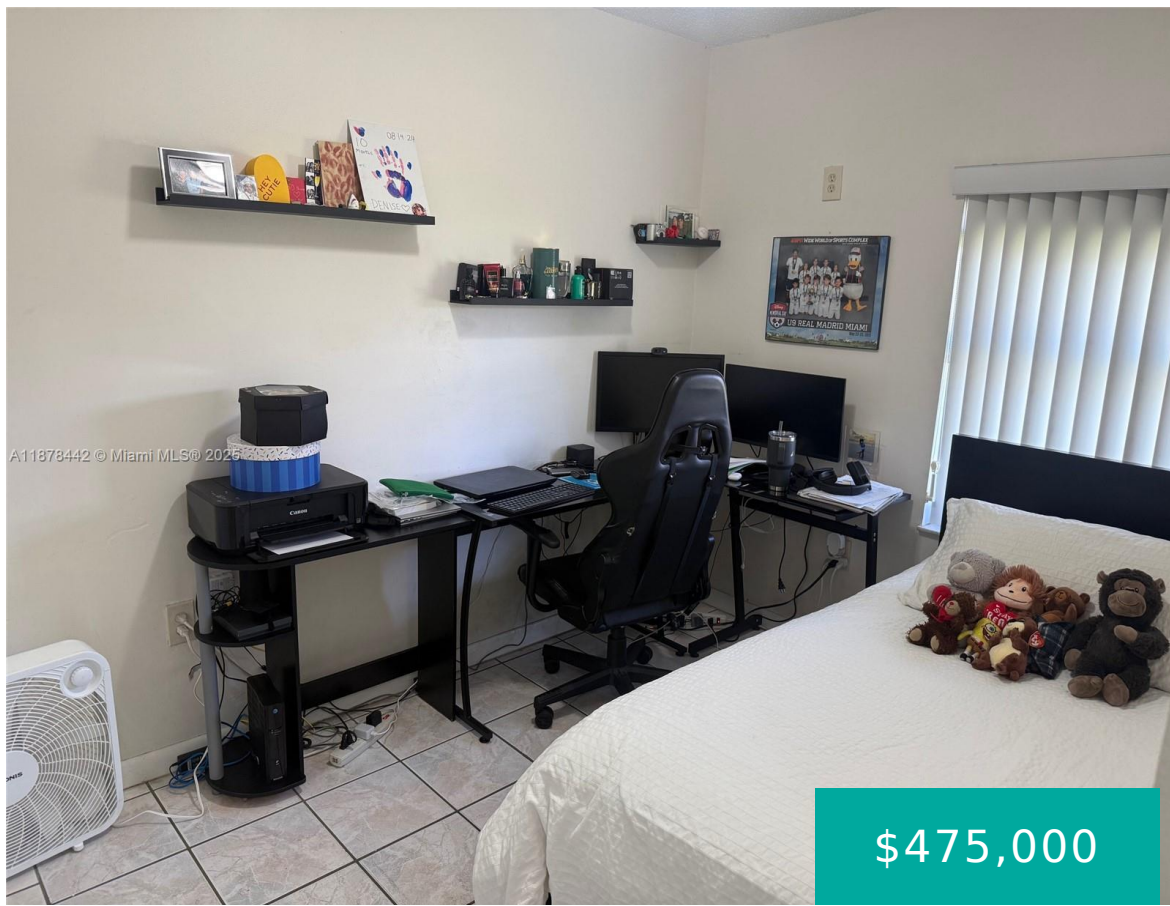


4929 139TH CT MIAMI FL 33175 4929 SW 139TH CT

<https://www.cays.com>



\$475,000



BENT TREE LAKE CENTRAL PB 106-8 LOT 5 BLK 3 & PROP INT IN & TO
 COMMON ELEMENTS LOT SIZE 2890 SQ FT OR 17776-0659 0897 1 COC
 21733-4917/22355 ****PRICE REDUCED****Lakefront Corner 3 Bed 2 Bath
 Townhouse in desirable Bent Tree Community. Granite Counters and Nice
 Cabinets in kitchen, Tile Floors thru-out, Large Covered Screened [...]

- 3 beds
- 2, 2 baths
- Residential, Townhouse
- Residential, Townhouse
- Active
- 1061 sq ft

Basics



Category: Residential, Townhouse

Status: Active

Bathrooms: 2, 2 baths

Floors: 1 floor

Year built: 1978

Subdivision Name: BENT TREE LAKE CENTRAL

Type: Residential, Townhouse

Bedrooms: 3 beds

Half baths: 0 half baths

Area: 1061 sq ft

View: Lake,Water

County: Miami-Dade

Property details

Subdivision Name: BENT TREE LAKE CENTRAL

Parcel Number: 33175

Property Features

Waterfront Features: LakeFront,LakePrivileges

Carport Y/N: 1

Cooling Y/N: 1

Heating: Electric

Pets Allowed: NoPetRestrictions,Yes

View Y/N: 1

Stories Total: 1

Parking Features: Guest,TwoOrMoreSpaces

Cooling: CentralAir

Garage Y/N: 1

Heating Y/N: 1

View: Lake,Water

Waterfront Y/N: 1

Location Details

County Or Parish: Miami-Dade

Middle/Junior School: Mcmillan; H.D.

Elementary School: Bent Tree

High School: Braddock G. Holmes

Building Details

Construction Materials: Block

Garage Spaces: 2

Covered Spaces: 4

Floor covering: CeramicTile



Amenities & Features

Parking Features: Guest,TwoOrMoreSpaces

Patio & Porch Features: Patio,Porch,Screened

Waterfront Features: LakeFront,LakePrivileges

Cooling: CentralAir

Heating: Electric

Appliances:

Dishwasher,ElectricRange,Microwave,Refrigerator,Washer

Security Features: SecurityGuard

Association Amenities: BasketballCourt,TennisCourts

Utilities: CableAvailable

Exterior Features: EnclosedPorch,Patio,StormSecurityShutters

Interior Features:

BedroomOnMainLevel,FamilyDiningRoom,FirstFloorEntry,MainLivingAreaEntryLevel

Nearby Schools

Middle Or Junior School: Mcmillan; H.D.

Elementary School: Bent Tree

High School: Braddock G. Holmes

Expenses, Fees & Taxes

Association Fee: \$170

Tax Annual Amount: \$6,195

Tax Year: 2024

Fees & Taxes

Association Fee: 170

Miscellaneous

Association Fee Frequency: Quarterly **List Office Name:** Global Investment Prop. Inc.

Listing Terms: Conventional,FHA,VaLoan

Miscellaneous



Above Grade **Virtual Tour URL:**
Finished Area: <https://www.propertypanorama.com/instaview/mia/A11878442>
Miami, FL

Courtesy of

Office Name: Global Investment Prop. Inc.

