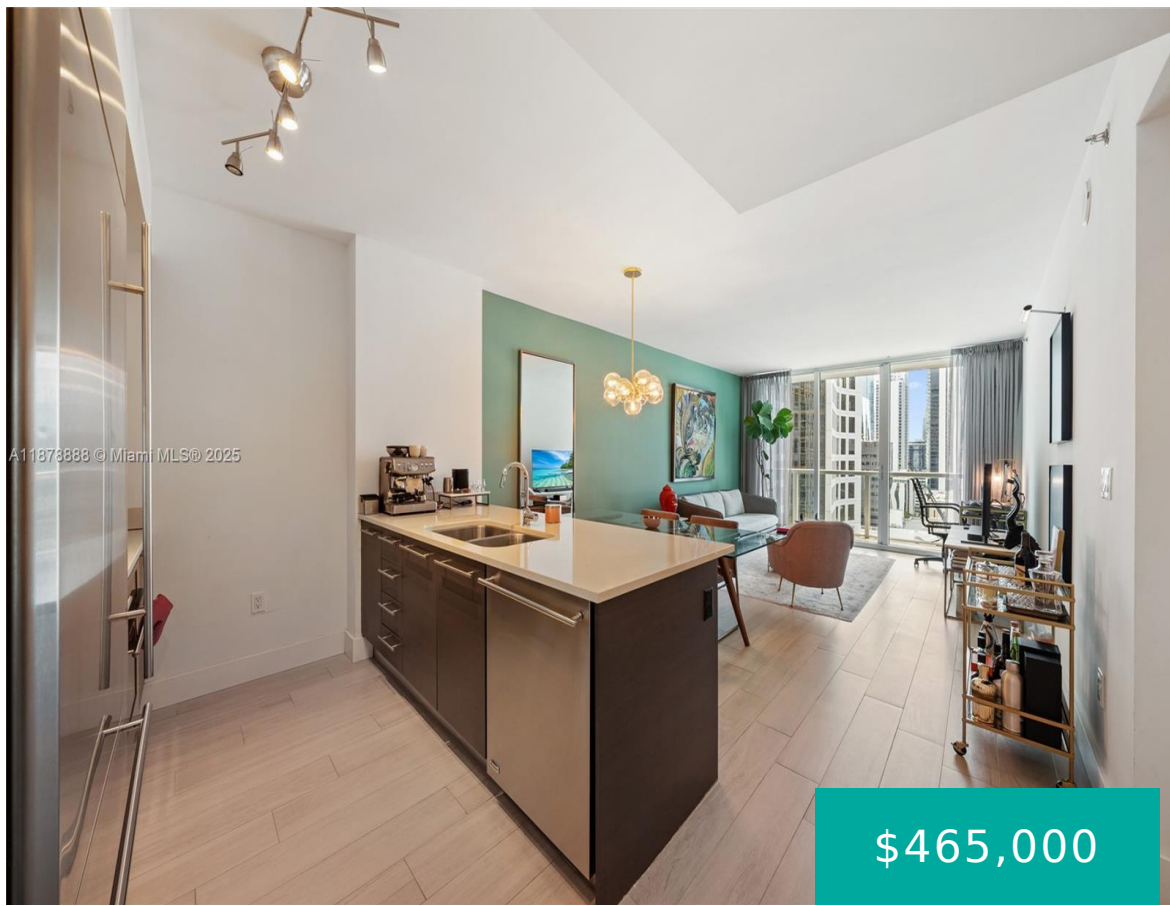


55 6TH ST MIAMI FL 33131 55 SE 6TH ST 1908

<https://www.cays.com>



\$465,000



500 BRICKELL WEST CONDO UNIT 1908 UNDIV 0.23907% INT IN COMMON ELEMENTS OFF REC 26352-3500 Welcome to 500 Brickell. Step into this sophisticated 1-bedroom, 1-bath residence with floor-to-ceiling glass framing sweeping views of the skyline and Biscayne Bay, across from Brickell City Centre and top dining. Residents enjoy 24-hour valet, garage parking, and concierge service. [...]

- 1 bed
- 1, 1 bath
- Condominium, Residential
- Condominium, Residential
- Active
- 738 sq ft

Basics



Category: Condominium, Residential

Status: Active

Bathrooms: 1, 1 bath

Floors: 42 floors

Year built: 2008

Subdivision Name: 500 BRICKELL WEST CONDO

Type: Condominium, Residential

Bedrooms: 1 bed

Half baths: 0 half baths

Area: 738 sq ft

View: Bay, City, Intercoastal

County: Miami-Dade

Property details

Subdivision Name: 500 BRICKELL WEST CONDO

Parcel Number: 33131

Property Features

Parking Features: Assigned, Attached, Garage, Valet

Cooling Y/N: 1

Heating: Central

Pets Allowed: Conditional, Yes

View Y/N: 1

Cooling: Central Air

Garage Y/N: 1

Heating Y/N: 1

View: Bay, City, Intercoastal

Stories Total: 42

Rooms & Units Description

Unit Number: 1908

Location Details

County Or Parish: Miami-Dade

Middle/Junior School: Shenandoah

Elementary School: Southside



Building Details

Architectural Style: HighRise

Covered Spaces: 1

Floor covering: Tile

Construction Materials: Block

Garage Spaces: 1

Amenities & Features

Pool Features: Association,Heated

Security Features: DoorMan,ElevatorSecured,SecuredGarageParking,SmokeDetectors

Association Amenities:

BilliardRoom,BikeStorage,Clubhouse,FitnessCenter,Other,Pool,Sauna,SpaHotTub,Trash,Elevators

Window Features: ImpactGlass

Exterior Features: Balcony

Heating: Central

Parking Features: Assigned,Attached,Garage,Valet

Patio & Porch Features: Balcony,Open

Utilities: CableAvailable

Cooling: CentralAir

Furnished: Negotiable

Interior Features:

BuiltInFeatures,BedroomOnMainLevel,ClosetCabinetry,KitchenDiningCombo,LivingDiningRoom,MainLevelPrimary,MainLivingAreaEntryLevel,Pantry,SeparateShower,WalkInClosets

Appliances:

Dryer,Dishwasher,ElectricRange,Disposal,IceMaker,Microwave,Refrigerator,SelfCleaningOven,Washer

Nearby Schools

Middle Or Junior School: Shenandoah

Elementary School: Southside

Expenses, Fees & Taxes

Association Fee: \$1,093

Tax Year: 2024

Tax Annual Amount: \$5,661

Fees & Taxes

Association Fee: 1093

Miscellaneous

Association Fee Frequency: Monthly

Listing Terms: Cash,Conventional

List Office Name: The Keyes Company

Direction Faces: South



Miscellaneous

Above Grade **Virtual Tour URL:**
Finished Area: <https://www.propertypanorama.com/instaview/mia/A11878888>
Miami, FL

Courtesy of

Office Name: The Keyes Company

