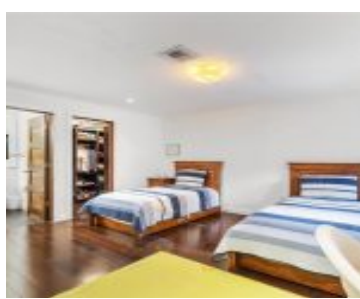


560 SABAL PALM RD MIAMI FL 33137 560 SABAL PALM RD

<https://www.cays.com>



\$5,500,000

BAY POINT PB 40-63 LOT 6 BLK 3 AND PROP INT IN & TO COMMON ELEMENTS NOT DEDICATED TO PUBLIC LOT SIZE 88.920 X 231 OR 16844-4551 0795 1 GREAT OPPORTUNITY! Modern home, nestled on a HUGE LOT (20,541 sqft) in Miami's most exclusive gated community of BAY POINT. 24/7 private security. 4 Beds / [...]

- 4 beds
- 3, 3 baths
- Residential, SingleFamilyResidence
- Residential, SingleFamilyResidence
- Active
- 2837 sq ft

Basics



Category: Residential, SingleFamilyResidence

Status: Active

Bathrooms: 3, 3 baths

Floors: 1 floor

Lot size: 20541, 20541 sq ft

View: Garden,Other

County: Miami-Dade

Type: Residential, SingleFamilyResidence

Bedrooms: 4 beds

Half baths: 0 half baths

Area: 2837 sq ft

Year built: 1953

Subdivision Name: BAY POINT

Property details

Subdivision Name: BAY POINT

Lot Size Square Feet: 20541

Parcel Number: 33137

Property Features

Parking Features:

Attached,Covered,Driveway,Garage,GarageDoorOpener

Cooling Y/N: 1

Heating: Central,Electric

View: Garden,Other

Cooling:

CentralAir,Electric

Garage Y/N: 1

Heating Y/N: 1

Stories: 1

Location Details

County Or Parish: Miami-Dade

Middle/Junior School: Horace Mann

Zoning Description: 0100

Building Details



Water Source: Public

Architectural Style:
Detached,OneStory

Lot Features: QuarterToHalfAcreLot,SprinklersAutomatic

Sewer: PublicSewer

Construction Materials: Block

Covered Spaces: 1

Garage Spaces: 1

Floor covering: Marble

Amenities & Features

Pool Features: Concrete,Fenced,InGround,Other,PoolEquipment,Pool

Parking Features: Attached,Covered,Driveway,Garage,GarageDoorOpener

Security Features: SmokeDetectors

Roof: Barrel

Window Features: ImpactGlass

Cooling: CentralAir,Electric

Exterior Features:

Barbecue,SecurityHighImpactDoors,Lighting,OutdoorGrill,Shed

Heating: Central,Electric

Interior Features:

WetBar,BedroomOnMainLevel,ClosetCabinetry,FirstFloorEntry,WalkInClosets

Appliances:

BuiltInOven,Dryer,Dishwasher,ElectricRange,ElectricWaterHeater,Microwave,Refrigerator,Washer

Nearby Schools

Middle Or Junior School: Horace Mann

Expenses, Fees & Taxes

Association Fee: \$6,000

Tax Annual Amount: \$19,298

Tax Year: 2024

Fees & Taxes

Association Fee: 6000

Miscellaneous



Association Fee Frequency:
Annually

List Office Name: Concept International Realty Inc

Listing Terms: Cash,Conventional

Community Features:
MaintainedCommunity,TennisCourts

Direction Faces: North

Miscellaneous

Above Grade **Virtual Tour URL:**

Finished Area: <https://www.propertypanorama.com/instaview/mia/A11882123>
Miami, FL

Courtesy of

Office Name: Concept International Realty Inc

