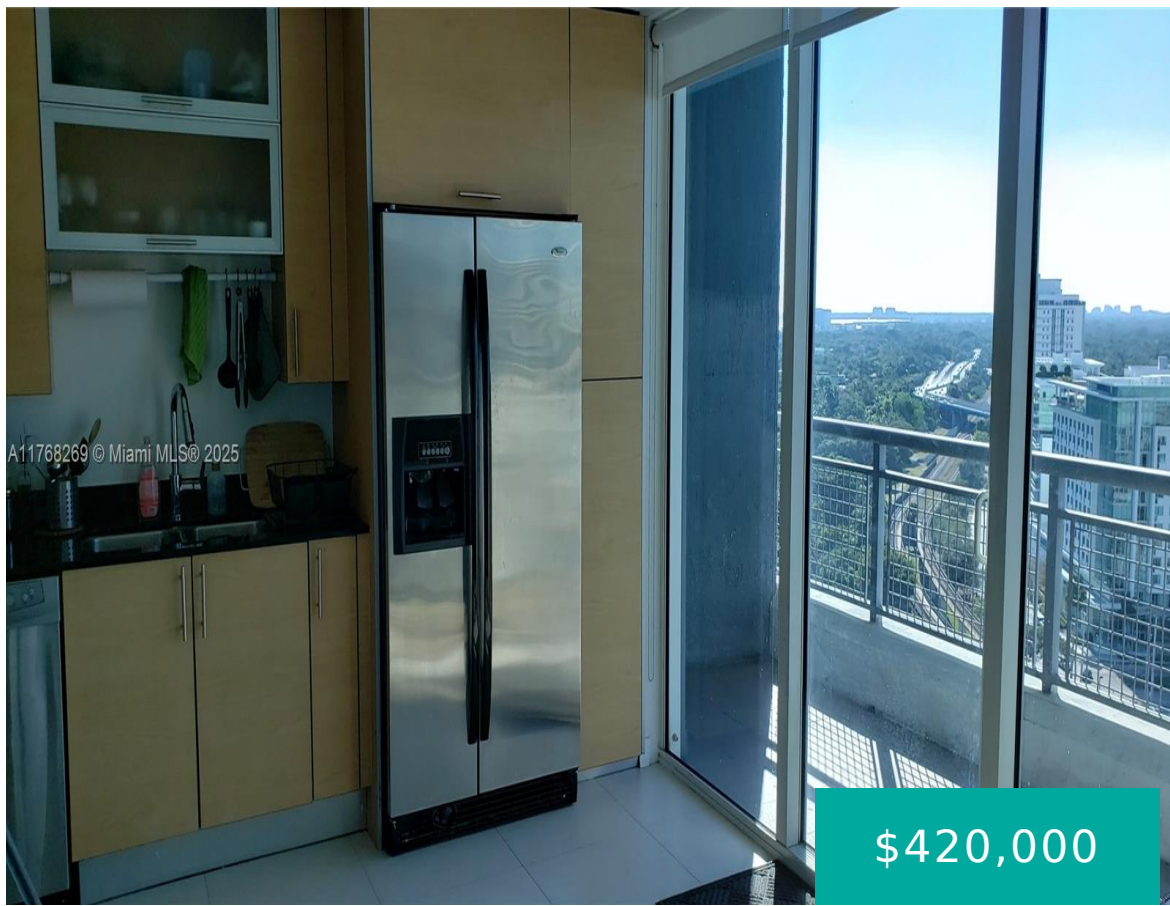


60 13TH ST MIAMI FL 33130 60 SW 13TH ST 1621

<https://www.cays.com>



INFINITY AT BRICKELL CONDO UNIT 1621 UNDIV 0.1421% INT IN COMMON ELEMENTS OFF REC 26630-2293 Great opportunity to buy a 1/1 corner unit at Infinity @Brickell. Prime location, walking distance to restaurants, shops, minutes from I-95 & other major arteries. Rented until Dec. 2025 to top tenant! Easy to show!

- 1 bed
- 1, 1 bath
- Condominium, Residential
- Condominium, Residential
- Active
- 620 sq ft

Basics



Category: Condominium, Residential

Status: Active

Bathrooms: 1, 1 bath

Floors: 56 floors

Year built: 2008

Subdivision Name: INFINITY AT BRICKELL COND

Type: Condominium, Residential

Bedrooms: 1 bed

Half baths: 0 half baths

Area: 620 sq ft

View: Other

County: Miami-Dade

Property details

Subdivision Name: INFINITY AT BRICKELL COND

Parcel Number: 33130

Property Features

Parking Features: OneSpace

Cooling Y/N: 1

Heating: Other

View: Other

Cooling: CentralAir

Garage Y/N: 1

Pets Allowed: Conditional, Yes

Stories Total: 56

Rooms & Units Description

Unit Number: 1621

Location Details

County Or Parish: Miami-Dade

Building Details



Construction Materials: Other

Garage Spaces: 1

Covered Spaces: 1

Floor covering: CeramicTile

Amenities & Features

Pool Features: Association

Security Features: Other

Cooling: CentralAir

Heating: Other

Appliances: Dishwasher,ElectricRange,Microwave

Parking Features: OneSpace

Association Amenities:
Elevators,FitnessCenter,Pool

Exterior Features: Other

Interior Features: Elevator,WalkInClosets

Expenses, Fees & Taxes

Association Fee: \$963

Tax Year: 2024

Tax Annual Amount: \$5,968

Fees & Taxes

Association Fee: 963

Miscellaneous

Association Fee Frequency: Monthly **List Office Name:** Great Properties International LLC

Listing Terms: Conventional

Miscellaneous



Above Grade **Virtual Tour URL:**
Finished Area: <https://www.propertypanorama.com/instaview/mia/A11768269>
Miami, FL

Courtesy of

Office Name: Great Properties International LLC

