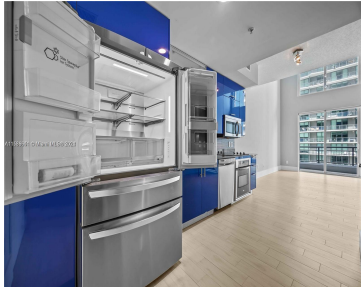


60 SW 13TH ST 3620 MIAMI FL 33130

https://www.cays.com



Sharp and sophisticated two-bedroom unit available at Infinity at Brickell. Located in the heart of Brickell. This “flow through” unit features dynamic eastern views of Biscayne Bay, while the upstairs bedroom enjoys majestic western views of Miami in all of its magic majesty. Unit has recently been equipped with state of the state of the [...]

- 2 beds
- 3 baths
- Condominium
- Residential
- Active
- 1298 sq ft

## Basics

**Bathrooms Half:** 1

**Lot Size Units:** Square Feet

**Type:** Condominium

**Bedrooms:** 2 beds

**Area:** 1298 sq ft

**Bathrooms Full:** 2

**Category:** Residential

**Status:** Active

**Bathrooms:** 3 baths

**Year built:** 2008



---

## Property details

**Total Building Area:** 1452

**Subdivision Name:** INFINITY AT BRICKELL COND

**Parcel Number:** 01-41-39-116-3950 **Possession:** Subject To Tenant Rights

---

## Property Features

**Exterior Features:**

Security/High Impact Doors

**Pool Features:** Association

**Security Features:** Elevator Secured,Lobby Secured,Security Guard

**Architectural Style:** High Rise

**Construction Materials:** Block

**Cooling Y/N:** 1

**Flooring:** Tile

**Garage Y/N:** 1

**Heating Y/N:** 1

**View:** Bay

**Entry Level:** 36

**Property Attached Y/N:** 1

**Interior Features:** Upper Level Primary,Bar

**Parking Features:** Covered,One Space,Valet

**Appliances:** Dryer,Dishwasher,Electric Range,Disposal,Microwave,Refrigerator,Self Cleaning Oven,Washer

**Association Amenities:** Business Center,Clubhouse,Community Kitchen,Fitness Center,Other,Pool,Sauna,Spa/Hot Tub,Elevator(s)

**Cooling:** Central Air

**Covered Spaces:** 1

**Garage Spaces:** 1

**Heating:** Central

**Pets Allowed:** Conditional,Yes

**View Y/N:** 1

**Entry Location:** 36

**Stories Total:** 52

---

## Rooms & Units Description

**Unit Number:** 3620

---

## Location Details



County Or Parish: Miami-Dade County

---

## Fees & Taxes

**Tax Annual Amount:** 9210

**Tax Year:** 2023

**Tax Legal Description:**  
INFINITY AT  
BRICKELL  
CONDO UNIT  
3620 UNDIV  
0.2637% INT IN  
COMMON  
ELEMENTS OFF  
REC 26630-2293

**Association Fee:** 1377

**Association Fee Frequency:**  
Monthly

**Association Fee Includes:** Association Management,Amenities,Insurance,Internet,Legal/Accounting,Maintenance Grounds,Maintenance Structure,Parking,Pest Control,Pool(s),Recreation Facilities,Reserve Fund,Sewer,Security,Trash,Water

---

## Miscellaneous

**Public Survey Township:** 1

**Public Survey Section:** 39

**Syndication Remarks:** Sharp and sophisticated two-bedroom unit available at Infinity at Brickell.

**Year Built Details:**  
Resale

**Virtual Tour URL:**  
<https://www.propertypanorama.com/instaview/mia/A11536641>

---

## Courtesy of

**Office Name:** Florida Capital Realty

