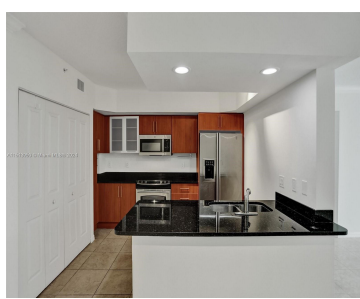


600 S DIXIE HWY 227 WEST PALM BEACH FL 33401

<https://www.cays.com>



This 2 bed/2bath apartment is situated in a new building, offering a bright and open ambiance. The kitchen features modern stainless steel appliances, and the convenience of a washer and dryer is included. With high ceilings and a spacious walking closet, the apartment exudes a comfortable and contemporary feel. Residents can enjoy a full-service building [...]

- 2 beds
- 2 baths
- Condominium
- Residential
- Active
- 1138 sq ft

Basics

Bathrooms Full: 2

Category: Residential

Status: Active

Bathrooms: 2 baths

Year built: 2006

Lot Size Units: Square Feet

Type: Condominium

Bedrooms: 2 beds

Area: 1138 sq ft



Property details

Total Building Area: 1138

Subdivision Name: PRADO CONDO

Parcel Number: 74434322390002270

Possession: Closing & Funding

Property Features

Exterior Features: Balcony

Interior Features: Bedroom on Main Level,Closet
Cabinetry,Dual Sinks,Kitchen Island,Living/Dining Room,Main
Living Area Entry Level,Walk-In Closet(s)

Pool Features: Association

Parking Features: Assigned,Attached,Covered,Garage,One
Space

Security Features: Closed
Circuit Camera(s),Door
Man,Elevator
Secured,Intercom,Key Card
Entry,Lobby Secured

Appliances: Dryer,Dishwasher,Electric
Range,Disposal,Microwave,Refrigerator,Washer

Architectural Style: High Rise

Association Amenities: Bike
Storage,Clubhouse,Elevator(s),Fitness
Center,Pool,Sauna,Spa/Hot Tub,Storage

Construction Materials: Block

Cooling: Central Air,Electric

Cooling Y/N: 1

Covered Spaces: 1

Flooring: Tile

Furnished: Unfurnished

Garage Spaces: 1

Garage Y/N: 1

Heating: Central,Electric

Heating Y/N: 1

Pets Allowed: Size Limit,Yes

View: Other

Entry Level: 2

Entry Location: 2

Patio and Porch Features:
Balcony,Open

Property Attached Y/N: 1

Attached Garage Y/N: 1

Stories Total: 8

Rooms & Units Description

Unit Number: 227



Location Details

County Or Parish: Palm Beach County

Middle/Junior School: Conniston

Elementary School: Roosevelt

High School: Forest Hill Community

Fees & Taxes

Tax Annual Amount: 6648

Tax Year: 2023

Tax Legal Description:

PRADO CONDOMINIUM UNIT
227

Association Fee: 945

Association Fee

Frequency: Monthly

Association Fee Includes: Cable

TV,HVAC,Insurance,Internet,Maintenance Grounds,Parking,Pest
Control,Pool(s),Sewer,Security,Trash,Water

Miscellaneous

Public Survey Township: 74

**Public
Survey**

Section: 22

Syndication Remarks: This 2 bed/2bath apartment is situated in a new building,
offering a bright and open ambiance.

Year Built

Details:

Resale

Virtual Tour URL:

<https://www.propertypanorama.com/instaview/mia/A11513950>

Courtesy of

Office Name: Inquest Realty Corp

