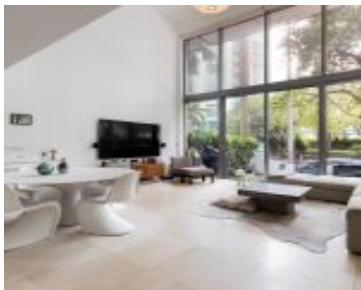
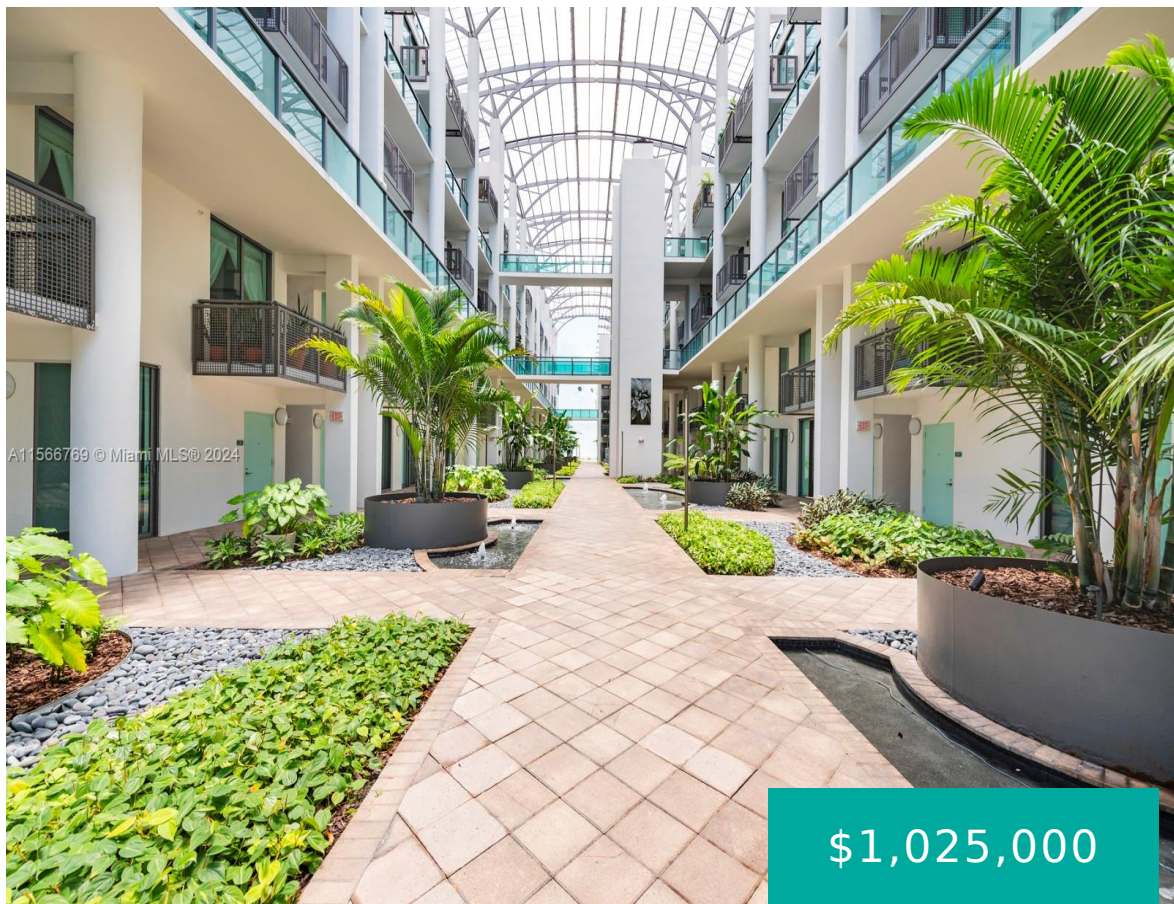


# 6000 COLLINS AVE MIAMI BEACH FL 33140 6000 COLLINS AVE 108

<https://www.cays.com>



TERRA BEACHSIDE CONDO UNIT 108 UNDIV 0.849152% INT IN COMMON ELEMENTS OFF REC 27449-0255 This spacious 3-bedroom, 1700 sq. ft. townhouse, nestled in a boutique building, offers a serene ambiance with its ground-level west-facing garden terrace, perfect for enjoying Miami Beach's coastal charm just steps from the beach. Centrally located in mid Miami Beach, it [...]

- 3 beds
- 2, 2 baths
- Condominium, Residential
- Condominium, Residential
- Active
- 1700 sq ft

## Basics



**Category:** Condominium, Residential

**Status:** Active

**Bathrooms:** 2, 2 baths

**Floors:** 3 floors

**Year built:** 2010

**Subdivision Name:** TERRA BEACHSIDE CONDO

**Type:** Condominium, Residential

**Bedrooms:** 3 beds

**Half baths:** 0 half baths

**Area:** 1700 sq ft

**View:** Other

**County:** Miami-Dade

---

## Property details

**Subdivision Name:** TERRA BEACHSIDE CONDO

**Parcel Number:** 33140

---

## Property Features

**Parking Features:**

Attached, Garage, Guest, OneSpace, GarageDoorOpener

**Cooling Y/N:** 1

**Heating:** None

**View:** Other

**Cooling:** CentralAir

**Garage Y/N:** 1

**Pets Allowed:**

NoPetRestrictions, Yes

**Stories Total:** 3

---

## Rooms & Units Description

**Unit Number:** 108

---

## Location Details

**County Or Parish:** Miami-Dade

---

## Building Details



**Architectural Style:** SplitLevel

**Covered Spaces:** 1

**Levels:** MultiSplit

**Construction Materials:** Block

**Garage Spaces:** 1

**Floor covering:** Marble

---

## Amenities & Features

**Pool Features:** Association,Heated

**Security Features:** ComplexFenced,SecuredGarageParking,KeyCardEntry,SecurityGuard,SmokeDetectors

**Association Amenities:** Clubhouse,Pool,SpaHotTub,Trash,Elevators

**Cooling:** CentralAir

**Heating:** None

**Appliances:** Dryer,Dishwasher,ElectricRange,IceMaker,Refrigerator

**Parking Features:** Attached,Garage,Guest,OneSpace,GarageDoorOpener

**Patio & Porch Features:** Balcony,Deck,Open

**Window Features:** ImpactGlass

**Exterior Features:** Balcony,Courtyard,Deck,SecurityHighImpactDoors

**Interior Features:** Bidet,BedroomOnMainLevel,DualSinks,FirstFloorEntry,MainLivingAreaEntryLevel,UpperLevelPrimary,Elevator

---

## Expenses, Fees & Taxes

**Association Fee:** \$1,600

**Tax Annual Amount:** \$10,100

**Tax Year:** 2023

---

## Fees & Taxes

**Association Fee:** 1600

---

## Miscellaneous

**Association Fee Frequency:** Monthly **List Office Name:** Brown Harris Stevens

**Listing Terms:** Cash,Conventional **Direction Faces:** West

---

## Miscellaneous

**Above Grade**

**Finished Area:**  
Miami Beach, FL

**Virtual Tour URL:**

<https://www.propertypanorama.com/instaview/mia/A11566769>



---

# Courtesy of

**Office Name:** Brown Harris Stevens

