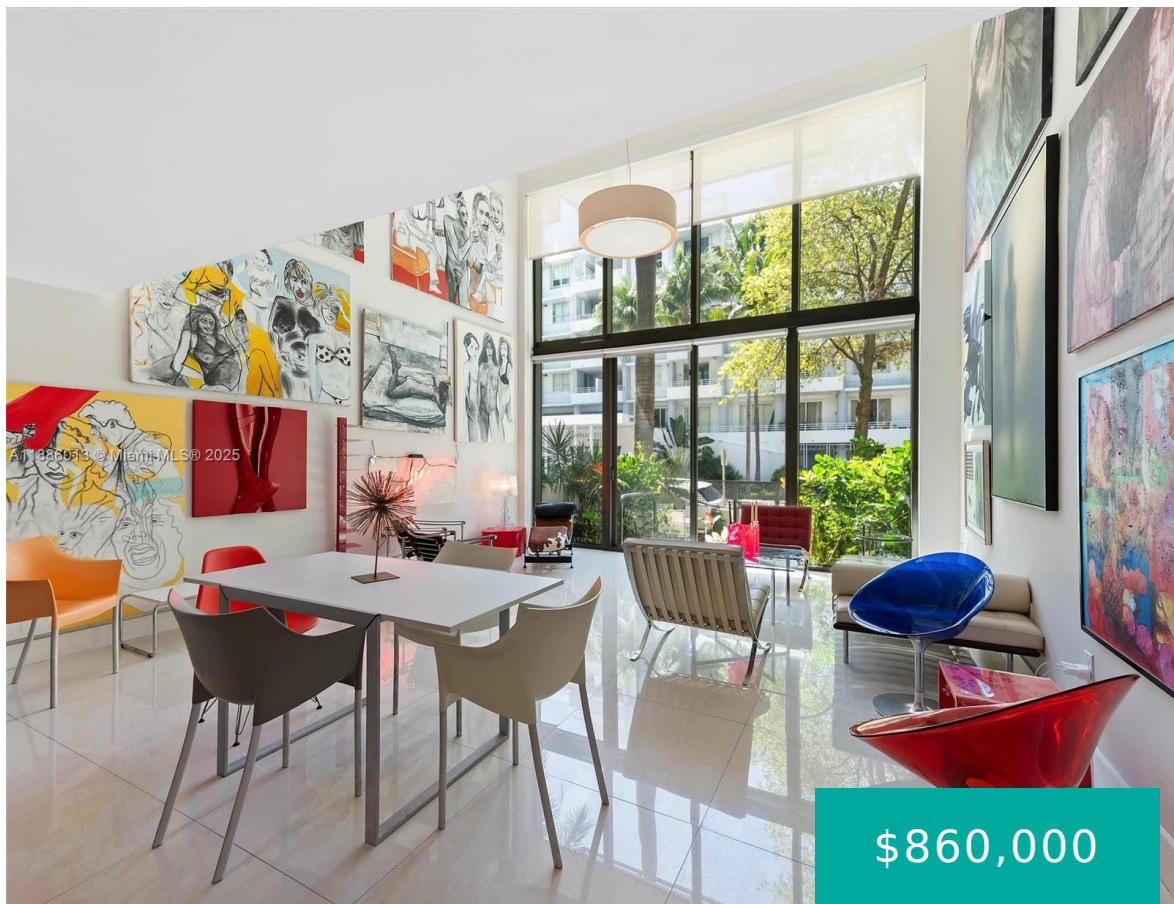


6000 COLLINS AVE MIAMI BEACH FL 33140 6000 COLLINS AVE 132

<https://www.cays.com>



\$860,000



TERRA BEACHSIDE CONDO UNIT 132 UNDIV 0.849152% INT IN COMMON ELEMENTS OFF REC 27449-0255 With beach access just across the street, this sophisticated Miami Beach maisonette offers a relaxed indoor/outdoor lifestyle. Enjoy townhouse-style privacy within a boutique condominium. Inside the home features 1,700 sq. ft., floor-to-ceiling impact windows, expansive 18' gallery-style walls & a chef's [...]

- 2 beds
- 2, 2 baths
- Condominium, Residential
- Condominium, Residential
- Active
- 1700 sq ft

Basics



Category: Condominium, Residential
Status: Active
Bathrooms: 2, 2 baths
Floors: 5 floors
Year built: 2010
Subdivision Name: TERRA BEACHSIDE CONDO

Type: Condominium, Residential
Bedrooms: 2 beds
Half baths: 0 half baths
Area: 1700 sq ft
View: Garden
County: Miami-Dade

Property details

Subdivision Name: TERRA BEACHSIDE CONDO

Parcel Number: 33140

Property Features

Parking Features: OneSpace,OnStreet

Cooling Y/N: 1

Heating: Central,Electric

Pets Allowed: Conditional,Yes

Stories Total: 5

Cooling: CentralAir,CeilingFans,Electric

Garage Y/N: 1

Heating Y/N: 1

View: Garden

Rooms & Units Description

Unit Number: 132

Location Details



County Or Parish: Miami-Dade

Directions: Take exit Miami Beach onto I-195, Keep left onto Julia Tuttle Cswy (I-195 E) toward Arthur Godfrey Road/SR-A1A, Turn left onto Alton Rd (SR-907 N), Keep right onto Alton Rd toward SR-907 N/Alton Road North, Turn right onto Indian Creek Dr (SR-A1A S).

Elementary School: North Beach

Middle/Junior School: Nautilus

High School: Miami Beach

Building Details

Construction Materials: Block

Covered Spaces: 1

Garage Spaces: 1

Floor covering: Marble

Amenities & Features

Pool Features: Association

Parking Features: OneSpace, OnStreet

Security Features:

SecuredGarageParking, LobbySecured, SecurityGuard

Association Amenities: BikeStorage, Pool, Elevators

Cooling: CentralAir, CeilingFans, Electric

Exterior Features: Courtyard, SecurityHighImpactDoors

Heating: Central, Electric

Interior Features:

BedroomOnMainLevel, FirstFloorEntry, SittingAreaInPrimary, UpperLevelPrimary

Appliances:

BuiltInOven, Dryer, Dishwasher, ElectricRange, Microwave, Refrigerator

Nearby Schools

Middle Or Junior School: Nautilus

Elementary School: North Beach

High School: Miami Beach

Expenses, Fees & Taxes

Association Fee: \$1,714

Tax Annual Amount: \$7,529

Tax Year: 2024



Fees & Taxes

Association Fee: 1714

Miscellaneous

Association Fee Frequency: Monthly **List Office Name:** Compass Florida, LLC

Listing Terms: Cash,Conventional

Miscellaneous

Above Grade

Virtual Tour URL:

Finished Area: <https://www.propertypanorama.com/instaview/mia/A11886013>

Miami Beach, FL

Courtesy of

Office Name: Compass Florida, LLC

