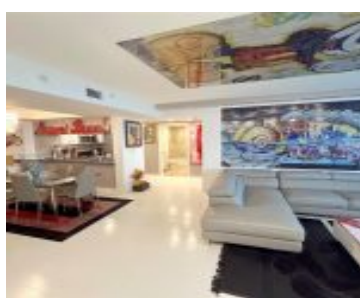


650 WEST AVE MIAMI BEACH FL 33139 650 WEST AVE 2804

<https://www.cays.com>



THE FLORIDIAN CONDO UNIT 2804 UNDIV 0.003020065% INT IN COMMON ELEMENTS OFF REC 22370-1320 COC 25240-2945 12 2006 1 Completely and tastefully remodeled. Stylish, bright with natural light, spacious 2 bedroom and 2 bathroom with split floor plan. Amazing view of all Miami Beach and the ocean from the 28th floor. Perfect location, quiet residential [...]

- 2 beds
- 2, 2 baths
- Condominium, Residential
- Condominium, Residential
- Active
- 1078 sq ft

Basics



Category: Condominium, Residential
Status: Active
Bathrooms: 2, 2 baths
Floors: 34 floors
Year built: 1997
Subdivision Name: THE FLORIDIAN CONDO

Type: Condominium, Residential
Bedrooms: 2 beds
Half baths: 0 half baths
Area: 1078 sq ft
View: Ocean,Other
County: Miami-Dade

Property details

Subdivision Name: THE FLORIDIAN CONDO

Parcel Number: 33139

Property Features

Waterfront Features: Bayfront

Cooling: CentralAir

Garage Y/N: 1

Heating Y/N: 1

View: Ocean,Other

Waterfront Y/N: 1

Parking Features: Assigned,Covered,OneSpace

Cooling Y/N: 1

Heating: Central

Pets Allowed: Conditional,Yes

View Y/N: 1

Stories Total: 34

Rooms & Units Description

Unit Number: 2804

Location Details

County Or Parish: Miami-Dade



Building Details

Architectural Style: HighRise

Covered Spaces: 1

Floor covering: Hardwood, Wood

Construction Materials: Other

Garage Spaces: 1

Amenities & Features

Pool Features: Association

Security Features:

ComplexFenced,SecuredGarageParking,KeyCardEntry,LobbySecured,SmokeDetectors

Association Amenities:

BusinessCenter,FitnessCenter,Barbecue,Other,PicnicArea,Pool,Sauna,TennisCourts,Trash,Elevators

Cooling: CentralAir

Furnished: Negotiable

Interior Features: SplitBedrooms

Parking Features: Assigned,Covered,OneSpace

Patio & Porch Features: Balcony,Open

Waterfront Features: Bayfront

Exterior Features: Balcony

Heating: Central

Appliances:

Dryer,Dishwasher,Microwave,Refrigerator,Washer

Expenses, Fees & Taxes

Association Fee: \$1,580

Tax Year: 2023

Tax Annual Amount: \$12,146

Fees & Taxes

Association Fee: 1580

Miscellaneous

Association Fee Frequency: Monthly **List Office Name:** SOBE International Realty

Listing Terms: Cash,Conventional

Direction Faces: East

Miscellaneous



Above **Virtual Tour URL:**
Grade <https://www.zillow.com/view-imx/4d9d816e-8467-4602-82af-32e2a0d6c51e?setAttribution=mls&wl=true&initialViewType=pano>
Finished
Area:
Miami
Beach,
FL

Courtesy of

Office Name: SOBE International Realty

