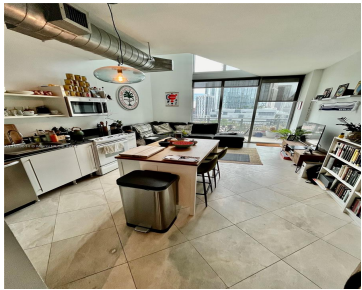


690 SW 1ST CT 1522 MIAMI FL 33130

https://www.cays.com



Amazing 2 stories unit with 1 bed 1.5 baths, Washer and dryer, 2 balconies and assigned parking space right in the Middle of Brickell! steps away from Brickell City Center, Metro Mover Station, I-95 and Brickell Avenue. Live in a Contemporary building with all the amenities like pool, gym, sauna and Billiard Room and many [...]

- 1 bed
- 2 baths
- Condominium
- Residential Lease
- Active
- 795 sq ft

Basics

Bathrooms Half: 1

Lot Size Units: Square Feet

Type: Condominium

Bedrooms: 1 bed

Area: 795 sq ft

Bathrooms Full: 1

Category: Residential Lease

Status: Active

Bathrooms: 2 baths

Year built: 2006



Property details

Association Name: Neo Vertika Condo A.

Subdivision Name: NEO VERTIKA CONDO

Direction Faces: East

Parcel Number:
01-41-38-122-3040

Rent Includes: Association Dues,Gardener,Pool,Sewer,Trash
Collection,Water

Property Features

Community Features: Fitness,Maintained
Community,Property Manager On-Site,Pool

Interior Features: Living/Dining Room,Upper Level
Primary,First Floor Entry,Bar

Window Features: Blinds,Impact Glass

Parking Features: Assigned,Covered,Guest,One
Space,Valet

Security Features: Building Security,Complex
Fenced,Key Card Entry

Association Amenities:
Elevator(s),Management,Maintenance,Pool,Guard,Spa/Hot
Tub

Cooling Y/N: 1

Flooring: Ceramic Tile,Wood

Furnished: Unfurnished

Garage Y/N: 1

Heating Y/N: 1

Pets Allowed: Conditional,No

View: Canal

Entry Level: 15

Patio and Porch Features: Balcony,Open

Water Source: Public

Utilities: Cable Available

Exterior Features: Balcony

Waterfront Features: Canal Front

Pool Features: Pool,Community

Spa Features: Community

Appliances:
Dryer,Dishwasher,Electric
Range,Electric Water
Heater,Microwave,Refrigerator,Washer

Cooling: Central Air

Covered Spaces: 1

Frontage Length: 100

Garage Spaces: 1

Heating: Central

Spa Y/N: 1

Sewer: Public Sewer

View Y/N: 1

Entry Location: 15

Waterfront Y/N: 1

Stories: 2



Rooms & Units Description

Unit Number: 1522

Location Details

County Or Parish: Miami-Dade County

Middle/Junior School: Shenandoah

Zoning Description: 6600

Elementary School: Southside

High School: Washington; Brooker T

Fees & Taxes

Tax Legal Description: NEO VERTIKA CONDO UNIT 1522 UNDIV 0.002006547% INT IN COMMON ELEMENTS OFF REC 24605-3349 COC 24788-0565 06 2006 1

Miscellaneous

Public Survey Township: 1

Syndication Remarks: Lease Application under attachments, NO PETS for tenants as per association rules

Virtual Tour URL:

<https://www.propertypanorama.com/instaview/mia/A11529614>

Public Survey Section: 38

Year Built Details:
Effective Year Built

Courtesy of

Office Name: Florida Realty of Miami Corp

