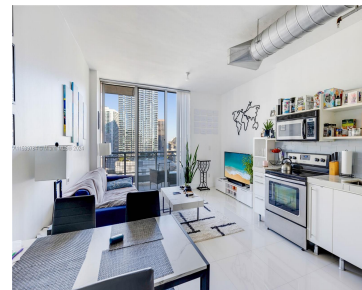
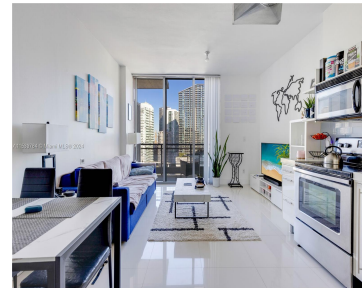


690 SW 1ST CT 2308 MIAMI FL 33130

<https://www.cays.com>



Neo Vertika Condos Rise 36 Stories Above The Miami River Overlooking All Of Miami's Downtown Skyline And Biscayne Bay! Bi-Level Split! Interior Finishes Including 24x24 Marble Floors Throughout, 20ft Floor-To-Ceiling Glass Windows. Refreshed Kitchen W/Add ed Dark Cabinets, Glass Back Splash & Ss Appliances. Frosted Glass Doors Throughout W/5" Dark Baseboards, California Closets, Glass Railings [...]

- 1 bed
- 2 baths
- Condominium
- Residential
- Active
- 843 sq ft

Basics

Bathrooms Half: 1

Lot Size Units: Square Feet

Type: Condominium

Bedrooms: 1 bed

Area: 843 sq ft

Bathrooms Full: 1

Category: Residential

Status: Active

Bathrooms: 2 baths

Year built: 2006



Property details

Total Building Area: 843

Parcel Number: 01-41-38-122-1210

Subdivision Name: NEO VERTIKA CONDO

Possession: Close Of Escrow

Property Features

Exterior Features: Balcony

Waterfront Features: Intracoastal Access,Ocean Access,River Front

Parking Features: Assigned,One Space,Valet

Appliances: Dryer,Dishwasher,Microwave,Refrigerator,Washer

Association Amenities: Billiard Room,Bike Storage,Business Center,Cabana,Fitness Center,Library,Pool,Elevator(s)

Cooling: Central Air

Covered Spaces: 1

Garage Spaces: 1

Heating: Central

Pets Allowed: Size Limit,Yes

View Y/N: 1

Entry Location: 27

Property Attached Y/N: 1

Stories Total: 36

Interior Features: First Floor Entry,Other,Upper Level Primary,Walk-In Closet(s),Air Filtration,Bar

Pool Features: Association

Security Features: Elevator Secured,Fire Alarm,Lobby Secured,Phone Entry,Smoke Detector(s)

Architectural Style: High Rise,Other

Construction Materials: Block

Cooling Y/N: 1

Flooring: Ceramic Tile

Garage Y/N: 1

Heating Y/N: 1

View: Bay,Intercoastal

Entry Level: 27

Patio and Porch Features: Balcony,Open

Waterfront Y/N: 1

Rooms & Units Description



Unit Number: 2308

Location Details

County Or Parish:

Miami-Dade County

Directions: I-95 SOUTH EXIT SW 7TH STREET, GO WEST TO SW 5ST
MAKE RIGHT, GO STRAIGHT UNTIL YOU CROSS FLAGER ST., BLDG
STRAIGHT AHEAD TO YOUR RIGHT.

Fees & Taxes

Tax Annual Amount: 5919

Tax Year: 2023

Tax Legal Description: NEO VERTIKA
CONDO UNIT 2308 UNDIV 0.002127697%
INT IN COMMON ELEMENTS OFF REC
24605-3349 COC 24983-2300 06 2006 1

Association Fee: 1012

Association Fee Frequency: Monthly

Association Fee Includes: Amenities,Common
Areas,Cable TV,HVAC,Insurance,Maintenance
Grounds

Miscellaneous

Public Survey Township: 1

**Public
Survey
Section:** 38

Syndication Remarks: All amemities, amazing restaurant downstairs, in the
hearth of Brickell next to the downtown, to I-95, next to the City center.

**Year Built
Details:**
Resale

Virtual Tour URL: <https://www.propertypanorama.com/instaview/mia/A11539784>

Courtesy of

Office Name: Serhant

