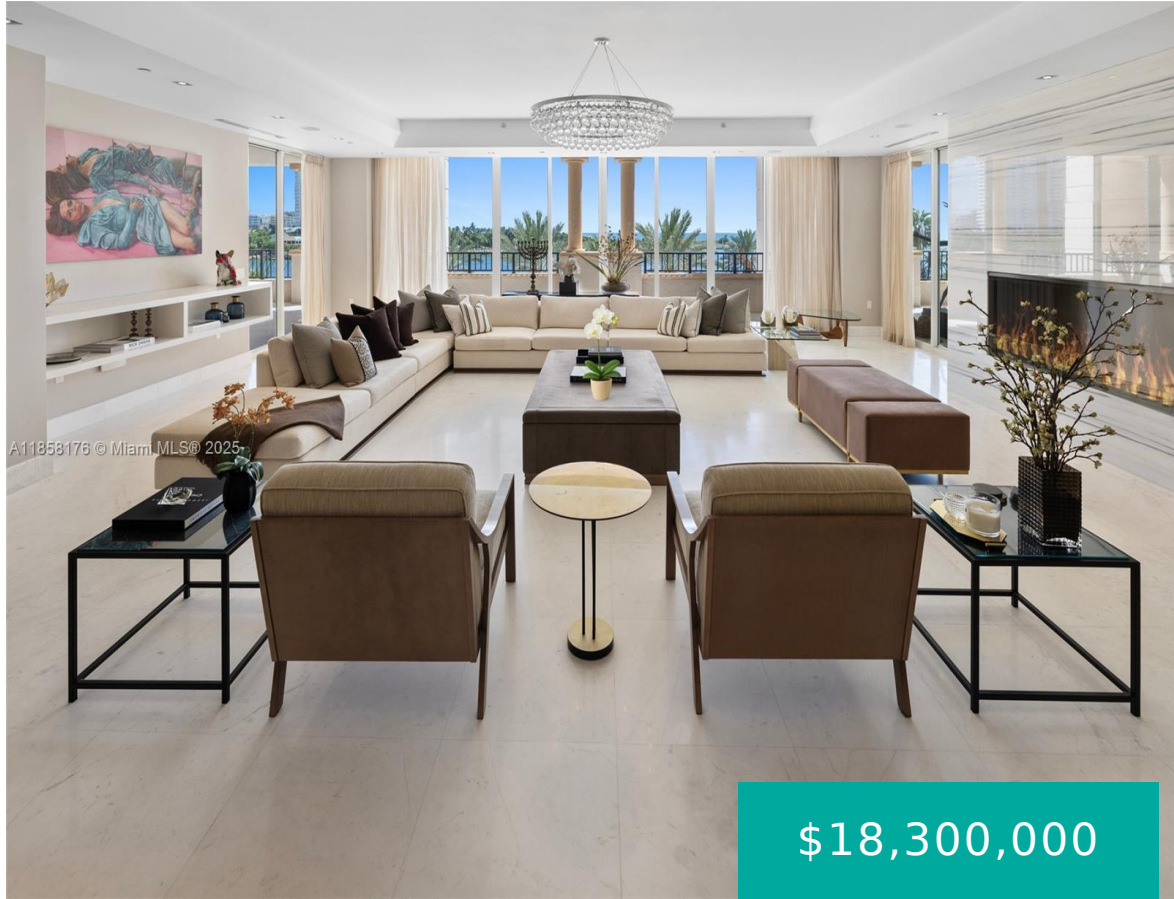


7133 FISHER ISLAND DR MIAMI BEACH FL 33109 7133 FISHER ISLAND DR 7133

<https://www.cays.com>



\$18,300,000



PALAZZO DEL MARE AT FISHER ISLAND CONDO NO 1 UNIT 7133 UNDIV
5.203% INT IN COMMON ELEMENTS OFF REC 25839-3116 Just steps from the Atlantic and Miami's vibrancy, Fisher Island offers a lifestyle of wellness and luxury. Commanding the prized center stack of a distinguished address, this 7,025 SF 6BR residence captures sweeping views of [...]

- 6 beds
- 5, 6 baths
- Condominium, Residential
- Condominium, Residential
- Active
- 7025 sq ft

Basics



Bathrooms Half: 1

Category: Condominium, Residential

Type: Condominium, Residential **Status:** Active

Bedrooms: 6 beds

Bathrooms: 5, 6 baths

Half baths: 1 half bath

Floors: 10 floors

Area: 7025 sq ft

Year built: 2007

View: Bay,Ocean

Subdivision Name: PALAZZO DEL MARE AT FISHER

County: Miami-Dade

Property details

Subdivision Name: PALAZZO DEL MARE AT FISHER

Parcel Number: 33109

Property Features

Building Features: ExteriorLighting

Waterfront Features:
Bayfront,OceanFront

Parking Features:
Assigned,Attached,Garage,GolfCartGarage,TwoOrMoreSpaces

Cooling:
CentralAir,Electric

Cooling Y/N: 1

Garage Y/N: 1

Heating: Central,Electric

Heating Y/N: 1

Pets Allowed: Conditional,Yes

View: Bay,Ocean

View Y/N: 1

Waterfront Y/N: 1

Stories Total: 10

Rooms & Units Description

Unit Number: 7133

Location Details



County Or Parish: Miami-Dade

Directions: McArthur Causeway east to Fisher Island ferry Landing - security entry clearance required for island access.

Elementary School: South Pointe **Middle/Junior School:** Nautilus

High School: Miami Beach

Building Details

Architectural Style: HighRise

Covered Spaces: 2

Floor covering: Marble

Construction Materials: Block

Garage Spaces: 2

Amenities & Features

Pool Features: Heated

Security Features: DoorMan,ElevatorSecured,SecurityGuard,SmokeDetectors

Association Amenities: BasketballCourt,Marina,BikeStorage,Clubhouse,FitnessCenter,GolfCourse,Pool,Storage,Trails,TransportationService,Elevators

Window Features: Blinds,Sliding,ImpactGlass

Exterior Features: Balcony,SecurityHighImpactDoors

Interior Features:

BreakfastBar,BuiltInFeatures,BreakfastArea,DiningArea,SeparateFormalDiningRoom,DualSinks,EntranceFoyer,Fireplace,KitchenIsland,MainLevelPrimary,MainLivingAreaEntryLevel,Pantry,SittingAreaInPrimary,SeparateShower,ThirdFloorEntry,Bar

Features: ExteriorLighting

Parking Features: Assigned,Attached,Garage,GolfCartGarage,TwoOrMoreSpaces

Patio & Porch Features: Balcony,Open

Waterfront Features: Bayfront,OceanFront

Cooling: CentralAir,Electric

Heating: Central,Electric

Appliances:

BuiltInOven,Dryer,Dishwasher,ElectricRange,Disposal,Microwave,Refrigerator,TrashCompactor,Washer

Nearby Schools

Middle Or Junior School: Nautilus

High School: Miami Beach

Elementary School: South Pointe

Expenses, Fees & Taxes

Association Fee: \$13,345

Tax Year: 2024

Tax Annual Amount: \$102,863

Fees & Taxes

Association Fee: 13345



Miscellaneous

Association Fee Frequency: Quarterly **List Office Name:** One Sotheby's International Realty

Listing Terms: Cash,Conventional **Community Features:** GolfCourseCommunity

Direction Faces: West

Miscellaneous

Above Grade Finished Area: Miami Beach, FL

Courtesy of

Office Name: One Sotheby's International Realty

