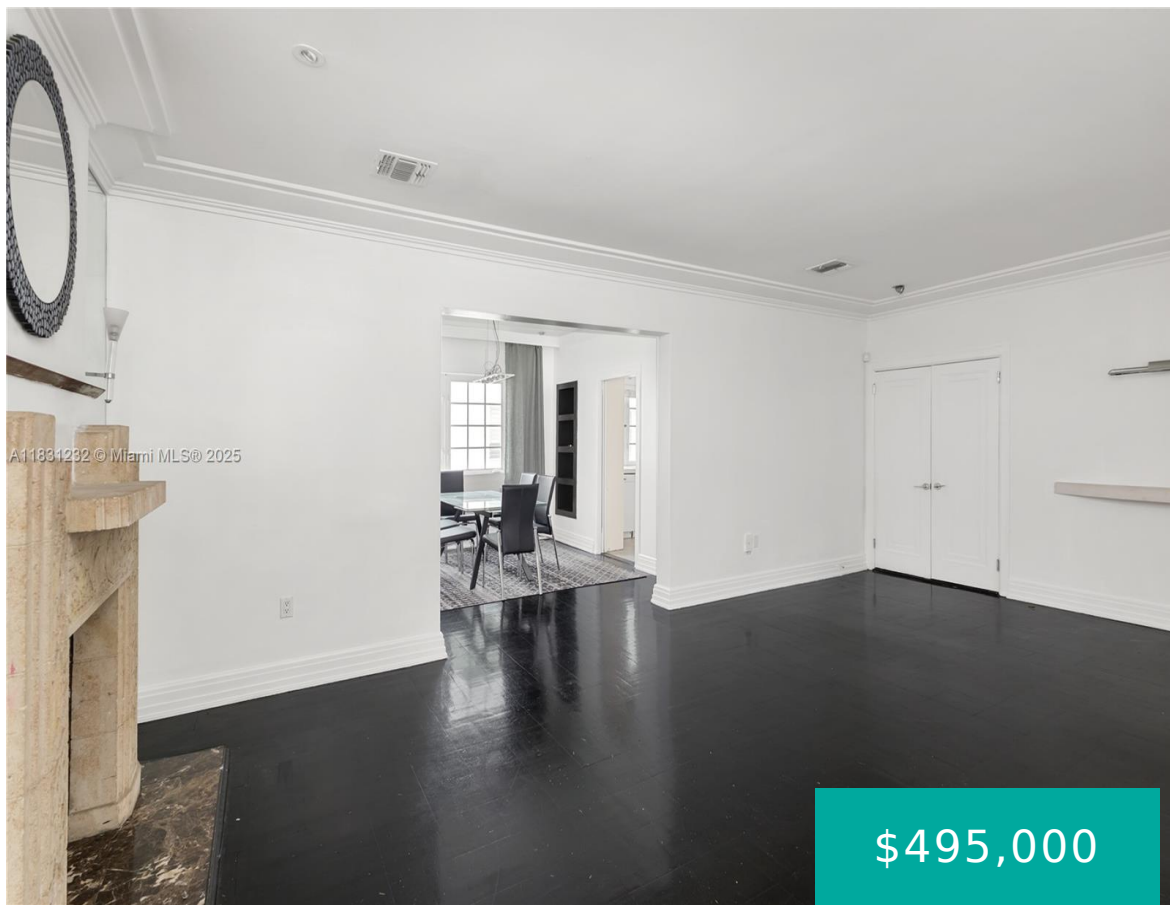
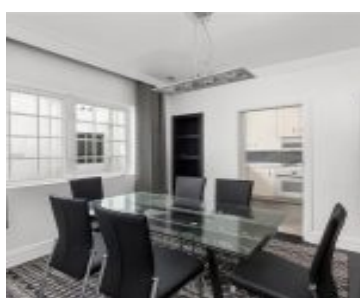


735 14TH PL MIAMI BEACH FL 33139 735 14TH PL 3

<https://www.cays.com>



\$495,000



735 CONDO UNIT 3 UNDIV 0.25% INT IN COMMON ELEMENTS OFF REC
16767-3295 OR 19275-4316 0900 1 Beautifully restored Art Deco building walking distance to the beach and to South Beach's world-class shopping & dining. Light-filled living spaces with volume ceilings, original architectural details (including plaster crown moldings, ziggurat arches & stone fireplace) and black [...]

- 2 beds
- 2, 2 baths
- Condominium, Residential
- Condominium, Residential
- Active
- 1126 sq ft

Basics



Category: Condominium, Residential

Status: Active

Bathrooms: 2, 2 baths

Floors: 2 floors

Year built: 1936

Subdivision Name: 735 CONDO

Type: Condominium, Residential

Bedrooms: 2 beds

Half baths: 0 half baths

Area: 1126 sq ft

View: Garden,Other

County: Miami-Dade

Property details

Subdivision Name: 735 CONDO

Parcel Number: 33139

Property Features

Parking Features: OnStreet

Cooling Y/N: 1

Heating Y/N: 1

View: Garden,Other

Cooling: CentralAir,CeilingFans,Electric

Heating: Central,Electric

Pets Allowed: Conditional,Yes

Stories Total: 2

Rooms & Units Description

Unit Number: 3

Location Details

County Or Parish: Miami-Dade

Middle/Junior School: Nautilus

Elementary School: Feinberg-Fisher K8

High School: Miami Beach

Building Details



Construction Materials: Block

Floor covering: Hardwood, Wood

Amenities & Features

Parking Features: OnStreet

Association Amenities: Other

Window Features: Drapes,ImpactGlass

Exterior Features:

SecurityHighImpactDoors,StormSecurityShutters

Heating: Central,Electric

Appliances:

Dryer,Dishwasher,GasRange,Microwave,Refrigerator,Washer

Security Features: LobbySecured,SmokeDetectors

Utilities: CableAvailable

Cooling: CentralAir,CeilingFans,Electric

Fireplace Features: Decorative

Interior Features:

BedroomOnMainLevel,ClosetCabinetry,EntranceFoyer,Fireplace,LivingDiningRoom,Pantry

Nearby Schools

Middle Or Junior School: Nautilus

Elementary School: Feinberg-Fisher K8

High School: Miami Beach

Expenses, Fees & Taxes

Association Fee: \$700

Tax Annual Amount: \$5,235

Tax Year: 2024

Fees & Taxes

Association Fee: 700

Miscellaneous

Association Fee Frequency: Monthly **List Office Name:** Live Work Play Miami Group, LLC.

Listing Terms: Cash,Conventional

Direction Faces: South

Miscellaneous



Above **Virtual Tour URL:**

Grade <https://www.dropbox.com/sc/fi/w46q8459yjri394uqa16n/Video-Jun-28-2025-12-49-25-PM.mov?rlkey=92bwdor6tupdbhafvhkl2zbi7&st=k2lxaigv&dl=0>

Finished

Area:

Miami

Beach,

FL

Courtesy of

Office Name: Live Work Play Miami Group, LLC.

